

# Customer Information Sheet

DRAWING No.: P70-2200045

SHEET 2 OF 2

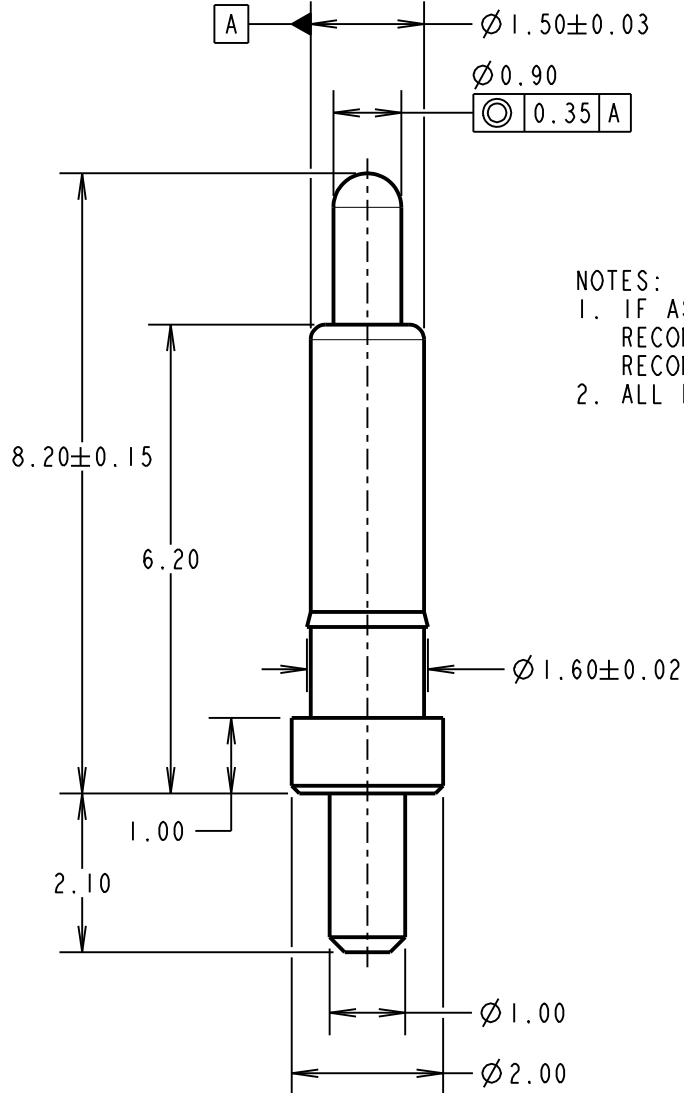
IF IN DOUBT - ASK

©

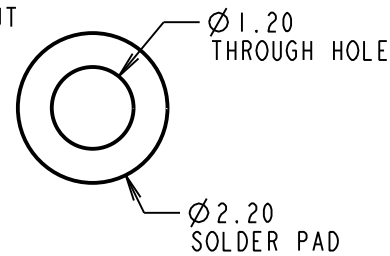
NOT TO SCALE

THIRD ANGLE PROJECTION

ALL DIMENSIONS IN mm



RECOMMENDED PCB  
PAD LAYOUT



NOTES:

- IF ASSEMBLING PIN INTO MOULDING:  
RECOMMENDED HOLE SIZE =  $\varnothing 1.56$  MIN.  
RECOMMENDED MATERIAL = GLASS FILLED PA46.
- ALL PRODUCTS ARE RoHS COMPLIANT.

SPECIFICATION:

MATERIAL:

BODY & PLUNGER = BRASS  
SPRING = STAINLESS STEEL WIRE

PLATING:

BODY =  $0.1\mu$  GOLD OVER  $1.4\mu$  NICKEL  
PLUNGER =  $0.4\mu$  GOLD OVER  $1.4\mu$  NICKEL

ELECTRICAL:

CONTACT RESISTANCE =  $30m\Omega$  MAX  
CURRENT RATING = 2.0A

MECHANICAL:

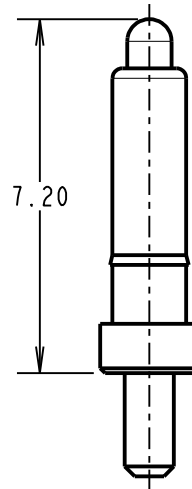
FORCE AT NORMAL HEIGHT =  $0.98N \pm 0.19N$   
DURABILITY = 10,000 CYCLES

ENVIRONMENTAL:

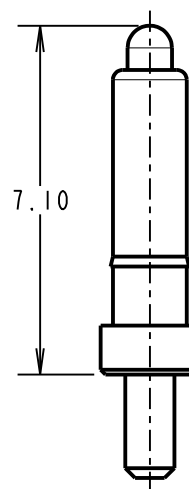
OPERATING TEMPERATURE =  $-40^{\circ}C$  TO  $85^{\circ}C$

PACKING:

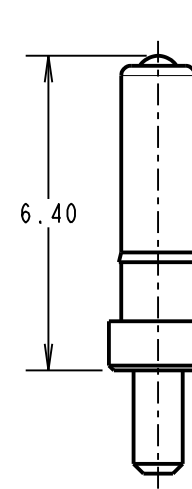
BAG



MAXIMUM WORKING  
HEIGHT



NORMAL WORKING  
HEIGHT



MINIMUM WORKING  
HEIGHT/MAX  
ALLOWED TRAVEL

SB	1	07.04.16	-----
NAME	ISS.	DATE	C/NOTE
APPROVED:		S.BENNETT	
CHECKED:		M.PLESTED	
DRAWN:		S.BENNETT	
CUSTOMER REF.:			
ASSEMBLY DRG:			

## HARWIN

www.harwin.com  
technical@harwin.com

THIS DRAWING AND ANY INFORMATION OR DESCRIPTIVE MATTER SET OUT HEREON ARE CONFIDENTIAL AND COPYRIGHT PROPERTY OF THE HARWIN GROUP AND MUST NOT BE DISCLOSED, LOANED, COPIED OR USED FOR MANUFACTURING, TENDERING OR FOR ANY OTHER PURPOSE WITHOUT THEIR WRITTEN PERMISSION.

TOLERANCES

X. =  $\pm 1mm$   
X.X =  $\pm 0.50mm$   
X.XX =  $\pm 0.10mm$   
X.XXX =  $\pm 0.01mm$   
ANGLES =  $\pm 5^{\circ}$   
UNLESS STATED

MATERIAL:

SEE ABOVE

FINISH: SEE ABOVE

S/AREA: mm<sup>2</sup>

TITLE:

SMT SPRING LOADED POGO PIN  
WITH PEG

DRAWING NUMBER:

P70-2200045

SHT  
2 OF 2