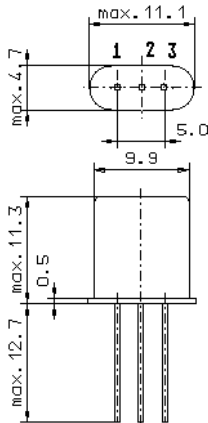


Specification for monolithic crystal filter:

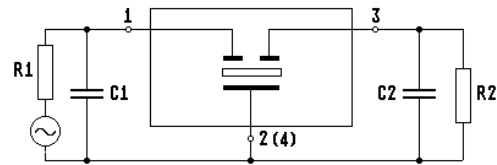
MQF 6.0-0750/01

1. General

1.1. Package:



GH3



- | | |
|-----------------------------------|-----------------|
| 1.2. Type name: | MQF 6.0-0750/01 |
| 1.3. Number of poles: | 2 |
| 1.4. Operating temperature range: | -20°C to +70°C |
| 1.5. Storage temperature range: | -45°C to +85°C |

2. Electric values

- | | |
|---|--|
| 2.1. Nominal centre frequency f_0 : | 6.0 MHz |
| 2.2. Pass band | |
| 2.2.1. Bandwidth between 3 dB - frequencies: | $> f_0 \pm 3.75$ kHz |
| 2.2.2. Ripple: | < 1.0 dB at $f_0 \pm 2.5$ kHz |
| 2.2.3. Insertion loss: | < 2.0 dB |
| (measured on smallest attenuation in pass band) | |
| 2.3. Stop band | |
| 2.3.1. $f_0 \pm 35$ kHz | > 35 dB |
| 2.3.2. Alternate Attenuation | > 35 dB (except spurious) |
| 2.4.1. Nominal input power level | 10 dBm |
| 2.4.2. Maximal input power level | 30 dBm |
| 2.5. Terminating impedance R//C (input and output): | $5000 \Omega // 0$ pF |
| 3. Marking: | manufacturer, date code
6.0-
0750/01 |
| 4. Environment conditions: | Corresponding to Vectron CF001 |

Edited by: _____ date: _____ name: _____