

**PLEASE CHECK WWW.MOLEX.COM FOR LATEST PART INFORMATION**

**Part Number:** [1703403020](#)  
**Status:** **Active**  
**Overview:** [Impact™ Backplane Connector and Cable Assembly System](#)  
**Description:** [Impact™ 85 Ohm Plus 4 Pair, Right Angle Daughtercard, Left Guided, 10 Columns, 120 Circuits, Plated Through Hole Dimension 0.39mm, Lead Free](#)

**Documents:**

[3D Model](#) [Application Specification AS-76060-990-001 \(PDF\)](#)  
[Drawing \(PDF\)](#) [RoHS Certificate of Compliance \(PDF\)](#)  
[Product Specification PS-170540-999-001 \(PDF\)](#)

**Agency Certification**

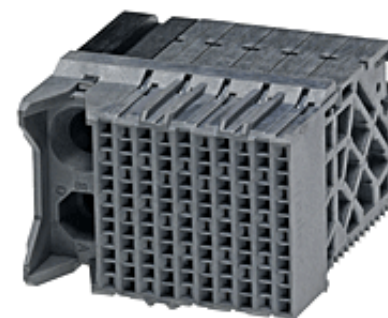
UL E29179

**General**

Product Family [Backplane Connectors](#)  
Series [170340](#)  
Application [Conventional, Coplanar, Daughtercard](#)  
Application Tooling Documents [TM-622018799](#)  
Component Type [PCB Receptacle](#)  
Overview [Impact™ Backplane Connector and Cable Assembly System](#)  
Product Name [Impact™](#)  
UPC [884982888449](#)

**Physical**

Circuits (Loaded) 120  
Circuits (maximum) 120  
Color - Resin Gray  
Durability (mating cycles max) 200  
First Mate / Last Break No  
Flammability 94V-0  
Guide to Mating Part Yes  
Keying to Mating Part None  
Material - Metal High Performance Alloy (HPA)  
Material - Plating Mating Gold  
Material - Plating Termination Tin  
Material - Resin High Temperature Thermoplastic  
Net Weight 17.125/g  
Number of Columns 10  
Number of Pairs 4  
Number of Rows 12  
Orientation Right Angle  
PC Tail Length 1.20mm  
PCB Locator No  
PCB Retention None  
PCB Thickness - Recommended 1.00mm  
Packaging Type Tray  
Pitch - Mating Interface 1.35mm, 1.90mm  
Pitch - Termination Interface 1.35mm, 1.90mm  
Plating min - Mating 0.762µm  
Polarized to PCB No  
Stackable No  
Surface Mount Compatible (SMC) No  
Temperature Range - Operating -55°C to +85°C  
Termination Interface: Style Through Hole - Compliant Pin



Series image - Reference only

**EU ELV**

**Not Relevant**

**EU RoHS**

**Compliant**

**China RoHS**

**REACH SVHC**

Not Contained Per  
-ED/01/2017 (12  
January 2017)

**Halogen-Free**

**Status**

**Low-Halogen**

**Need more information on product environmental compliance?**

Email [productcompliance@molex.com](mailto:productcompliance@molex.com)  
Please visit the [Contact Us](#) section for any non-product compliance questions.

China ROHS Green Image  
ELV Not Relevant  
RoHS Phthalates Not Contained

**Search Parts in this Series**

[170340](#) Series

**Mates With**

[170335](#) Impact™ 85 Ohm Plus Vertical Header

**Application Tooling | FAQ**

*Tooling specifications and manuals are found by selecting the products below. Crimp Height Specifications are then contained in the Application Tooling Specification document.*

**Global**

Description	Product #
Daughter Card	<a href="#">0622018641</a>
Module Installation	
Press-In Tool	

**Electrical**

Current - Maximum per Contact	0.75A
Data Rate	25.0 Gbps
Impedance	85Ω
Shield Type	N/A
Shielded	No
Voltage - Maximum	30V AC (RMS)/DC

**Solder Process Data**

Lead-free Process Capability	N/A
------------------------------	-----

**Material Info****Reference - Drawing Numbers**

Application Specification	AS-76060-990-001
Electrical Model Document	EE-170340-001
Product Specification	PS-170540-999-001
S-Parameter Model	SP-170340-001
Sales Drawing	SD-170340-0002
Symbol/Footprint Data	SYM-170340-3020

This document was generated on 03/07/2017

**PLEASE CHECK [WWW.MOLEX.COM](http://WWW.MOLEX.COM) FOR LATEST PART INFORMATION**