

IEC Appliance Inlet C14 or C18 with Filter, Protection Degree IP65 into the Appliance, Fuseholder 1- or 2-pole, Front or Rear Mounting

Medical fuse drawer



V-Lock



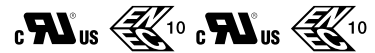
5707.xxxx.x2 Mounting from front side



5707.xxxx.xxx.22 with IP 54 V-Lock cord connection



5707 with IP 54 Inlet Gasket



Description

- Panel Mount:
Screw-on version from front or rear side, Screws with sealing are included
- 4 Functions:
Appliance Inlet protection class I or II, Line filter in standard and medical version, Fuseholder for fuse-links 5 x 20 mm, IP 65 protection into the appliance
- For front side mounting versions a sealing kit IP 54 for the power supply connection is available as an accessory: 4700.0021
- Option suffix ".22" offers IP54 for the power input in combination with V-Lock cordsets
- Quick connect terminals 6.3 x 0.8 mm

Approvals

- VDE Certificate Number: 40016382
- UL File Number: E72928

Characteristics

- Extreme robust design
- All single elements are already wired
- Screw type fuse carrier, slotted
- With EMC-shield
- Especially for applications in rough environments
- Suitable for use in equipment according to IEC/UL 60950
Suitable for use in medical equipment according to IEC/UL 60601-1

Other versions on request

- With solder terminals
- Class X1- and Y1-capacitors for enhanced withstand voltage
- Medical version M80
- Additional factory-mounted sealing (IP54) of power input
- Version with current rating 3 A

Weblinks

[pdf-datasheet](#), [html-datasheet](#), [General Product Information](#), [Approvals](#), [CE declaration of conformity](#), [RoHS](#), [CHINA-RoHS](#), [REACH](#), [Mating Connectors](#), [e-Shop](#), [SCHURTER-Stock-Check](#), [Distributor-Stock-Check](#), [CAD-Drawings](#), [Accessories](#), [Wire Harnessing](#), [Detailed request for product](#)

Newly available variants corresponding to V-Lock mating cordset. The connector is equipped with a notch intended for use with the latching cordset. The cord latching system prevents against accidental removal of the cordset.

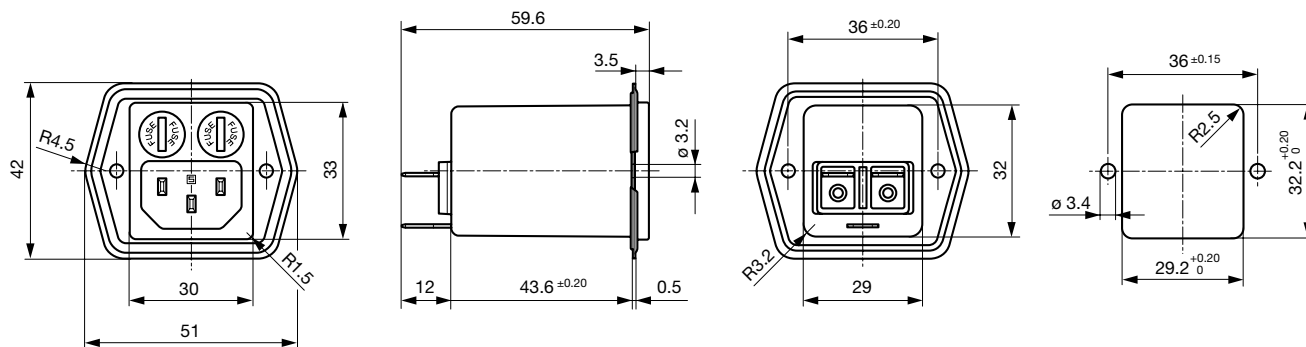
Newly available variants corresponding to V-Lock mating cordset. The connector is equipped with a notch intended for use with the latching cordset. The cord latching system prevents against accidental removal of the cordset.

Technical Data

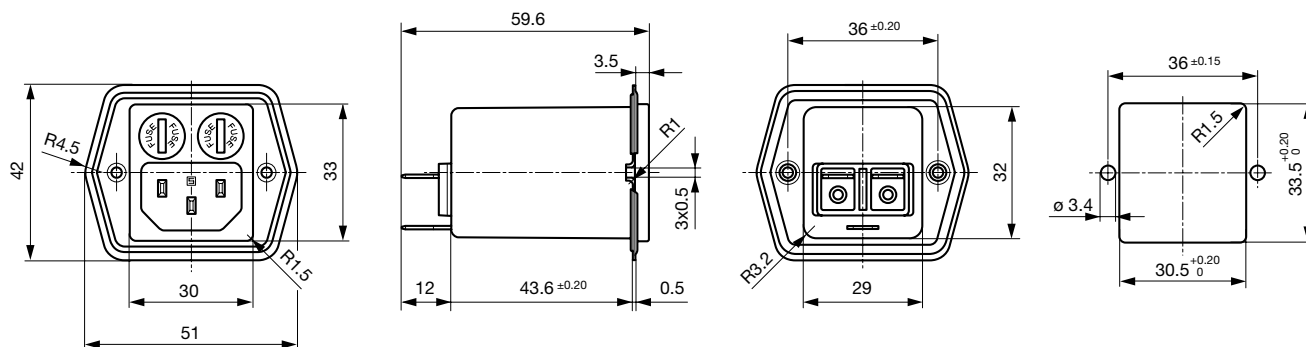
| | | | |
|---------------------------|--|-----------------------------------|---|
| Ratings IEC | 1 - 8A @ Ta 40 °C / 250VAC; 50Hz | Appliance-Inlet/-Outlet | C14 / C18 acc. to IEC 60320-1 UL 498, CSA C22.2 no. 42 (for cold conditions) pin-temperature 70 °C, 8A, Protection Class I or II |
| Ratings UL/CSA | 1 - 8A @ Ta 40 °C / 125VAC; 60Hz | Fuseholder | 1 or 2 pole, Shocksafe category PC2 acc. to IEC 60127-6, for fuse-links 5 x 20mm |
| Leakage Current | standard < 0.5mA (250V / 60Hz) medical < 5 µA (250 V / 60 Hz) | Rated Power Acceptance @ Ta 23 °C | 5 x 20: 1.6W 1-pole/ 1,2W 2-pole per pole |
| Dielectric Strength | > 1.7kVDC between L-N > 2.7kVDC between L/N-PE Test voltage (2sec) | Power Acceptance @ Ta > 23°C | Admissible power acceptance at higher ambient temperature see derating curves |
| Allowable Operation Temp. | -25 °C to 85 °C | Line Filter | Standard and Medical Version, IEC 60939, UL 1283, CSA C22.2 no. 8 Technical Details |
| Climatic Category | 25/085/21 acc. to IEC 60068-1 | MTBF | > 2'800'000h acc. to MIL-HB-217 F |
| Degree of Protection | from front side IP 65 acc. to IEC 60529 from rear-side IP 65 acc. to IEC 60529 | | |
| Protection Class | Suitable for appliances with protection class I or II acc. to IEC 61140 | | |
| Terminal | Quick connect terminals 6.3 x 0.8 mm | | |
| Panel Thickness s | Screw, max 3mm Mounting screw torque max 0.8Nm 2 screws M3 with sealing are provided | | |
| Material: Housing | black / white / metallic, UL 94V-0 | | |

Dimensions

Mounting from front side

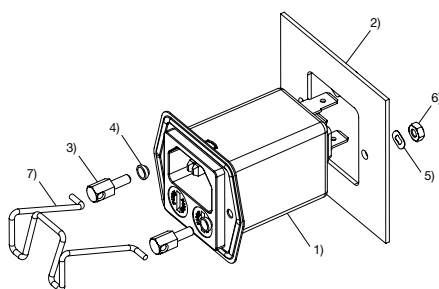


Mounting from rear side

**Assembly Instructions**

Mounting sealing kit IP 54 for the power supply (only for frontside mounting)

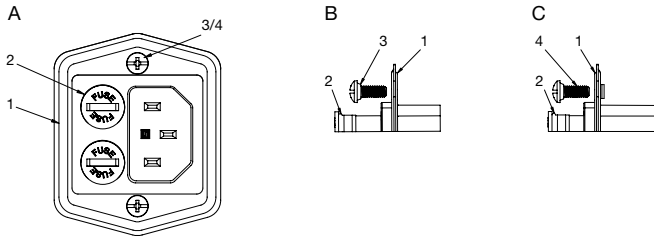
Mating cordsets to sealing kit



- 1) Power entry module with factory-mounted inlet gasket
- 2) Chassis
- 3) Pillar
- 4) Gasket ring
- 5) Crinkle washer
- 6) Nut
- 7) Retaining clip

| Part no | Country plug | Cable length | Cross section | Color |
|-----------|----------------|--------------|------------------------|-------|
| 6000.0214 | open end | 2.0 m | 3x1 mm ² | black |
| 6003.0215 | EURO plug | 2.5 m | 3x1 mm ² | black |
| 6004.0215 | EURO plug | 2.5 m | 3x1 mm ² | black |
| 6007.0212 | EURO plug | 1.0 m | 3x1 mm ² | black |
| 6007.0214 | IEC plug | 2.0 m | 3x1 mm ² | black |
| 6004.0114 | EURO plug | 2.0 m | 3x0.75 mm ² | black |
| 6026.0215 | Italy | 2.5 m | 3x1 mm ² | black |
| 6009.1315 | North America | 2.5 m | 3x18 AWG | black |
| 6047.6414 | North America | 2.0 m | 3x0.75 mm ² | black |
| 6009.1214 | North America | 2.0 m | 3x18 AWG | black |
| 6011.0215 | Switzerland | 2.5 m | 3x1 mm ² | black |
| 6044.0215 | United Kingdom | 2.5 m | 3x1 mm ² | black |

Mounting standard version



- A) front view
- B) detail front mounting type
- C) detail rear mounting type

- 1) sealing of flange
- 2) sealing of fuseholder
- 3) sealing of screw hole (front mounting type: sealing ring on screw head)
- 4) sealing of screw hole (rear mounting type: sealing on screw thread)

Important:

- use supplied fuse caps (2) and mounting screws (3/4)
- optimal sealing requires even and solid panel opening
- recommended tightening torque for mounting screws (2/3/4): 0.5-0.8 Nm
- IP65 protection between the inlet and connector pins, but no IP rating between the connector pins and the plug of the power cord!

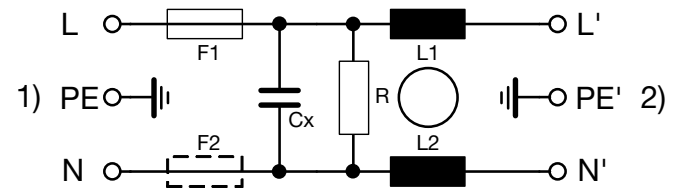
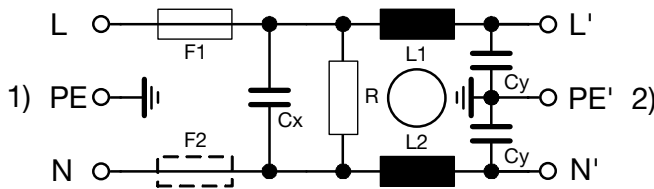
Technical Data of Filter-Components

| Rated Current [A] | Filter-Type | Inductances L [mH] | Capacitance CX [nF] | Capacitance CY [nF] | R [MΩ] |
|-------------------|-----------------------|--------------------|---------------------|---------------------|--------|
| 1 | Standard Version | 2 x 12 | 100 | 2.2 | 1 |
| 2 | Standard Version | 2 x 5.2 | 100 | 2.2 | 1 |
| 4 | Standard Version | 2 x 2 | 100 | 2.2 | 1 |
| 6 | Standard Version | 2 x 0.8 | 100 | 2.2 | 1 |
| 8 | Standard Version | 2 x 0.4 | 100 | 2.2 | 1 |
| 1 | Medical Version (M5) | 2 x 12 | 100 | - | 1 |
| 2 | Medical Version (M5) | 2 x 5.2 | 100 | - | 1 |
| 4 | Medical Version (M5) | 2 x 2 | 100 | - | 1 |
| 6 | Medical Version (M5) | 2 x 0.8 | 100 | - | 1 |
| 8 | Medical Version (M5) | 2 x 0.4 | 100 | - | 1 |
| 2 | Medical Version (M80) | 2 x 5.2 | 100 | 0.47 | 1 |

Diagrams

Standard version

Medical version M5

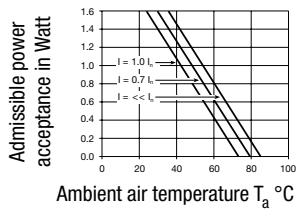


- 1) Line
- 2) Load

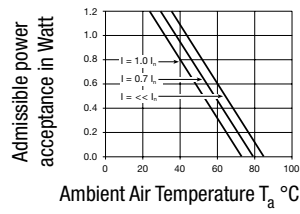
- 1) Line
- 2) Load

Derating Curves

1-pole



2-pole

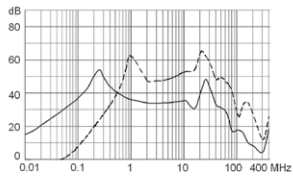


Attenuation Loss

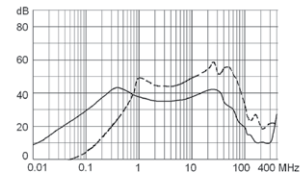
Standard version

- - - 50Ω differential mode _____ 50Ω common mode

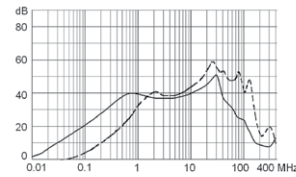
1 A



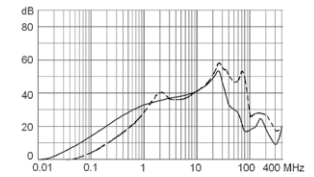
2 A



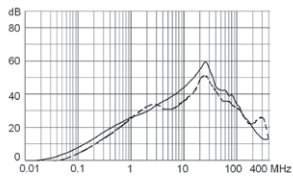
4 A



6 A

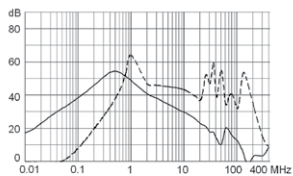


8 A

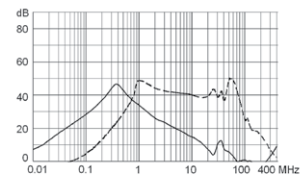


Medical version (M5)

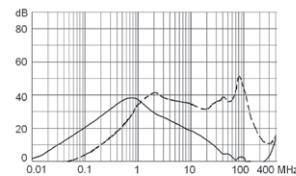
1 A



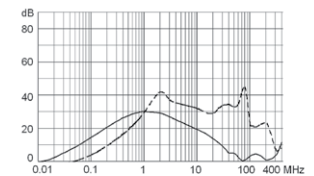
2 A



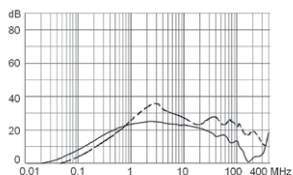
4 A



6 A



8 A



All Variants

| Rated Current [A] | Filter-Type | Mounting side | Protection Class | Fuseholder | Color | Order Number |
|-------------------|-----------------------|---------------|------------------|------------|-------|------------------|
| 1 | Standard Version | Front Side | I | 1-pole | black | 5707.0101.112 |
| 1 | Standard Version | Rear Side | I | 1-pole | black | 5707.0101.113 |
| 2 | Standard Version | Front Side | I | 1-pole | black | 5707.0201.112 |
| 2 | Standard Version | Rear Side | I | 1-pole | black | 5707.0201.113 |
| 4 | Standard Version | Front Side | I | 1-pole | black | 5707.0401.112 |
| 4 | Standard Version | Rear Side | I | 1-pole | black | 5707.0401.113 |
| 6 | Standard Version | Front Side | I | 1-pole | black | 5707.0601.112 |
| 6 | Standard Version | Rear Side | I | 1-pole | black | 5707.0601.113 |
| 8 | Standard Version | Front Side | I | 1-pole | black | 5707.0801.112 |
| 8 | Standard Version | Rear Side | I | 1-pole | black | 5707.0801.113 |
| 1 | Standard Version | Front Side | I | 2-pole | black | 5707.0101.312 |
| 1 | Standard Version | Rear Side | I | 2-pole | black | 5707.0101.313 |
| 2 | Standard Version | Front Side | I | 2-pole | black | 5707.0201.312 |
| 2 | Standard Version | Rear Side | I | 2-pole | black | 5707.0201.313 |
| 4 | Standard Version | Front Side | I | 2-pole | black | 5707.0401.312 |
| 4 | Standard Version | Rear Side | I | 2-pole | black | 5707.0401.313 |
| 4 | Standard Version | Rear Side | I | 2-pole | black | 5707.0401.313.22 |
| 6 | Standard Version | Front Side | I | 2-pole | black | 5707.0601.312 |
| 6 | Standard Version | Rear Side | I | 2-pole | black | 5707.0601.313 |
| 8 | Standard Version | Front Side | I | 2-pole | black | 5707.0801.312 |
| 8 | Standard Version | Front Side | I | 2-pole | black | 5707.0801.312.01 |
| 8 | Standard Version | Rear Side | I | 2-pole | black | 5707.0801.313 |
| 8 | Standard Version | Rear Side | I | 2-pole | black | 5707.0801.313.21 |
| 1 | Medical Version (M5) | Front Side | I | 2-pole | black | 5707.0103.312 |
| 1 | Medical Version (M5) | Rear Side | I | 2-pole | black | 5707.0103.313 |
| 1 | Medical Version (M5) | Rear Side | I | 2-pole | black | 5707.0103.313.21 |
| 2 | Medical Version (M5) | Front Side | I | 2-pole | black | 5707.0203.312 |
| 2 | Medical Version (M5) | Rear Side | I | 2-pole | black | 5707.0203.313 |
| 2 | Medical Version (M5) | Rear Side | I | 2-pole | black | 5707.0203.313.21 |
| 4 | Medical Version (M5) | Front Side | I | 2-pole | black | 5707.0403.312 |
| 4 | Medical Version (M5) | Rear Side | I | 2-pole | black | 5707.0403.313 |
| 4 | Medical Version (M5) | Rear Side | I | 2-pole | black | 5707.0403.313.21 |
| 6 | Medical Version (M5) | Front Side | I | 2-pole | black | 5707.0603.312 |
| 6 | Medical Version (M5) | Rear Side | I | 2-pole | black | 5707.0603.313 |
| 6 | Medical Version (M5) | Rear Side | I | 2-pole | black | 5707.0603.313.21 |
| 6 | Medical Version (M5) | Front Side | I | 2-pole | white | 5707.0613.312 |
| 6 | Medical Version (M5) | Front Side | I | 2-pole | white | 5707.0613.312.21 |
| 6 | Medical Version (M5) | Rear Side | I | 2-pole | white | 5707.0613.313 |
| 6 | Medical Version (M5) | Rear Side | I | 2-pole | white | 5707.0613.313.21 |
| 8 | Medical Version (M5) | Front Side | I | 2-pole | black | 5707.0803.312 |
| 8 | Medical Version (M5) | Front Side | I | 2-pole | black | 5707.0803.312.22 |
| 8 | Medical Version (M5) | Rear Side | I | 2-pole | black | 5707.0803.313 |
| 8 | Medical Version (M5) | Rear Side | I | 2-pole | black | 5707.0803.313.21 |
| 1 | Medical Version (M5) | Front Side | II | 2-pole | black | 5707.0103.412 |
| 1 | Medical Version (M5) | Rear Side | II | 2-pole | black | 5707.0103.413 |
| 2 | Medical Version (M5) | Front Side | II | 2-pole | black | 5707.0203.412 |
| 2 | Medical Version (M5) | Rear Side | II | 2-pole | black | 5707.0203.413 |
| 4 | Medical Version (M5) | Front Side | II | 2-pole | black | 5707.0403.412 |
| 4 | Medical Version (M5) | Rear Side | II | 2-pole | black | 5707.0403.413 |
| 6 | Medical Version (M5) | Front Side | II | 2-pole | black | 5707.0603.412 |
| 6 | Medical Version (M5) | Rear Side | II | 2-pole | black | 5707.0603.413 |
| 8 | Medical Version (M5) | Front Side | II | 2-pole | black | 5707.0803.412 |
| 8 | Medical Version (M5) | Rear Side | II | 2-pole | black | 5707.0803.413 |
| 2 | Medical Version (M80) | Front Side | I | 2-pole | black | 5707.0205.312.01 |

| Rated Current [A] | Filter-Type | Mounting side | Protection Class | Fuseholder | Color | Order Number |
|-------------------|-------------|---------------|------------------|------------|-------|--------------|
|-------------------|-------------|---------------|------------------|------------|-------|--------------|

Most Popular.

Availability for all products can be searched real-time: <http://www.schurter.com/Stock-Check/Stock-Check-SCHURTER>

In addition to the IP 65 sealing to the appliance (standard version), the power input can be protected from ingressing fluids and dust with IP 54. This option is for V-Lock cordsets with suffix ".22" or for a cord with a retaining set with suffix ".01" available. The variant for IP54 with V-Lock cordsets is for front and rear side mounting versions available (5707.xxxx.xxx.22). The variant for IP54 with cord retaining set is only for front mounting versions available (5707.xxxx.xxx.01). A cord retaining set is available for fixing the cord connector: 4700.0021 (sample 4700.0021.H)

Suffix ".21" corresponds to the version with V-Lock mating cordset. The connector is equipped with a notch intended for use with the latching cordset. The cord latching system prevents against accidental removal of the cordset.

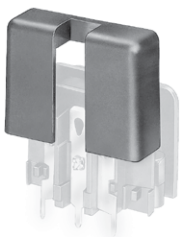
Packaging unit 10 Pcs

Accessories

Description



Wire Harness
Wire harness for SCHURTER products



Assorted Covers
Rear Cover

0859.0047

Mating Outlets/Connectors

Category / Description

Connector Overview complete



| | |
|--|---------|
| 4782 Mounting: Power Cord, 3 x 1 mm ² / 3 x 18 AWG, Cable, Connector: IEC C13 | 4782 |
| 4022 Mounting: Power Supply Cord, 3 x 1.5 mm ² , Screw clamps, Connector: IEC C13 | 4022 |
| 4785 Mounting: Power Cord, 3 x 1 mm ² / 3 x 18 AWG, Cable, Connector: IEC C13 | 4785 |
| 4300-06 Mounting: Power Cord, 3 x 1 mm ² / 3 x 18 AWG, Cable, Connector: IEC C13 | 4300-06 |
| 4012 Mounting: Power Supply Cord, 3 x 1.5 mm ² , Screw clamps, Connector: IEC C13 | 4012 |
| Connector further types to 5707 | ... |

Interconnection Cord Overview complete



| | |
|--|-----------|
| Cord Sets 10 A, Interconnection, 1.0 m, Connector IEC C13, cord end: | 6007.0212 |
| Cord Sets 10 A, Interconnection, 2.0 m, Connector IEC C13, cord end: | 6007.0214 |
| Interconnection Cord further types to 5707 | |

Category / Description



[Power Cord Overview complete](#)

| | |
|---|-----------|
| Cord Sets 10 A, Interconnection, 2.0 m, IEC cord end: | 6007.0204 |
|---|-----------|

[Power Cord further types to 5707](#)

[Power Supply Cord Overview complete](#)



| | |
|--|-----------|
| Cord Sets 10 A, Europlug, 2.5 m, Connector IEC C13, cord end: | 6004.0215 |
| Cord Sets 10 A, Europlug, 2.5 m, Connector IEC C13, cord end: | 6003.0215 |
| Cord Sets 10 A, uninsulated wires, 2.0 m, Connector IEC C13, cord end: | 6000.0224 |
| Cord Sets 10 A, uninsulated wires, 2.0 m, Connector IEC C13, cord end: | 6000.0214 |
| Cord Sets 10 A, United Kingdom, 2.5 m, Connector IEC C13, cord end: | 6044.0215 |

[Power Supply Cord further types to 5707](#)

...

[Power Supply or Interconnection Cord Overview complete](#)



| | |
|---|-----------|
| Cord Sets 10 A, United Kingdom, 2.0 m, Connector IEC cord end: | 6044.0204 |
| Kabelverbindung 10 A, United Kingdom, 2.0 m, Connector IEC C13, cord end: | 6045.0114 |
| Kabelverbindung 10 A, diverse, diverse m, Connector IEC C13, cord end: | 6003.0205 |
| Kabelverbindung 10 A, diverse, diverse m, Connector IEC C13, cord end: | 6026.0205 |
| Kabelverbindung 10 A, diverse, diverse m, Connector IEC C13, cord end: | 6049.0007 |

[Power Supply or Interconnection Cord further types to 5707](#)

Mating Outlets/Connectors shuttered

[Power Cord Overview complete](#)



| | |
|--|-----------|
| VAC17KS, North America, V-Lock cord retaining, 2.0 m, Connector C17, cord end: | 6051.2801 |
| VAC17KS, North America, V-Lock cord retaining, 2.0 m, Connector C17, cord end: | 6051.2811 |
| VAC17KS, Europlug, V-Lock cord retaining, 2.0 m, Connector IEC C17, cord end: | 6051.2803 |
| VAC17KS, Europlug, V-Lock cord retaining, 2.0 m, Connector IEC C17, cord end: | 6051.2813 |
| VAC13KS, Overview, diverse Connector IEC C13, cord end: | VAC13KS |

[Power Cord further types to 5707](#)