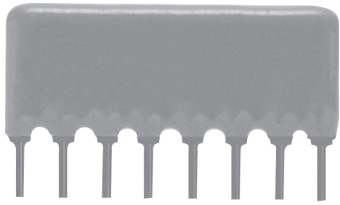


Resistor/Capacitor Networks, Coated SIP



FEATURES

- Highly stable thick film resistors.
- NPO or X7R capacitors for line terminator.
- Wide operating temperature range.
- **Custom Resistor/Capacitor schematics available.**

ELECTRICAL SPECIFICATIONS - RESISTORS

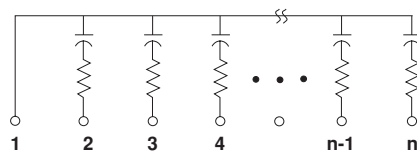
Resistance Range: 50 ohms to 1 kilohm. Others available.
Resistance Tolerance: $\pm 2\%$, $\pm 5\%$ standard. $\pm 1\%$ available.
Temperature Coefficient of Resistance: $\pm 150\text{PPM}/^\circ\text{C}$.
Operating Temperature Range: -55°C to $+125^\circ\text{C}$.
Operating Voltage: 50 VDC maximum. Higher voltage available.

ELECTRICAL SPECIFICATIONS - CAPACITORS

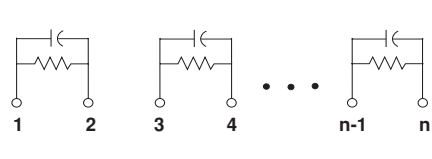
Type: NPO or X7R.
NPO Capacitance Range Standard: 33pF - 3900pF, other values available.
X7R Capacitance Range: 470pF - 0.1 μF , other values available.
Tolerance: NPO Type = $\pm 10\%$, $\pm 20\%$. X7R Type = $\pm 10\%$, $\pm 20\%$. Tighter tolerance available. Consult factory at 818-781-1642.
Voltage Rating: 50VDC. Higher voltage available.

SCHEMATICS

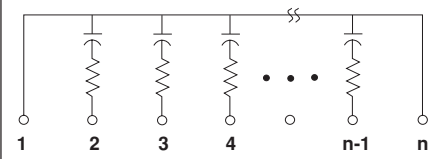
Schematic 01



Schematic 02



Schematic 09



NOTE: Custom schematics available.

DIMENSIONS in inches [millimeters]

	NUMBER OF PINS	A (Max.)	B ± 0.005 [.127]	C (Max.)
	6	0.590 [14.99]	0.500 [12.70]	0.350 [8.89]
7	0.690 [17.53]	0.600 [15.24]	0.350 [8.89]	
8	0.790 [20.07]	0.700 [17.78]	0.350 [8.89]	
9	0.890 [22.61]	0.800 [20.32]	0.350 [8.89]	
10	0.990 [25.15]	0.900 [22.86]	0.350 [8.89]	
11	1.09 [27.69]	1.00 [25.40]	0.350 [8.89]	
12	1.19 [30.23]	1.10 [27.94]	0.350 [8.89]	

NOTE: Other sizes available.

ORDERING INFORMATION

TRC MODEL	08 NUMBER OF PINS	01 SCHEMATIC	101 RESISTANCE VALUE (Ohms)	J RESISTANCE TOLERANCE	560 CAPACITANCE VALUE (pF)	K CAPACITANCE TOLERANCE*
			First two digits are significant, third digit signifies number of zeros to follow.	F = $\pm 1\%$ G = $\pm 2\%$ J = $\pm 5\%$	First two digits are significant, third digit signifies number of zeros to follow.	K = $\pm 10\%$ M = $\pm 20\%$

*Tighter tolerance available.