

6

5

4

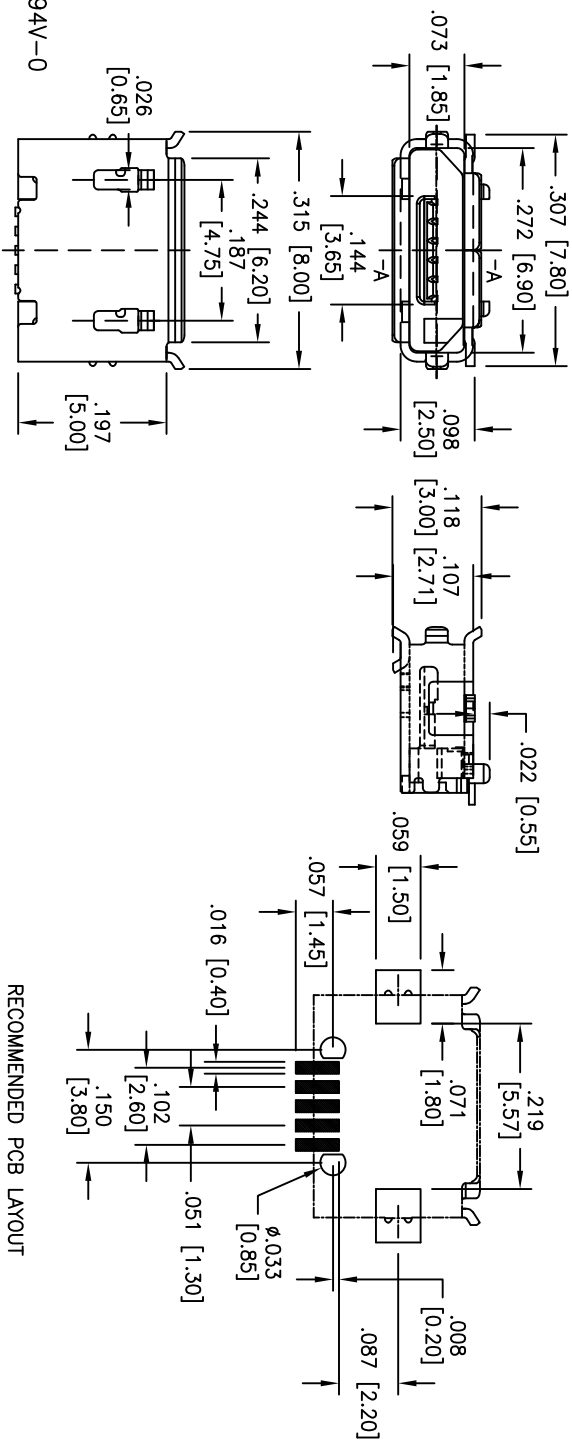
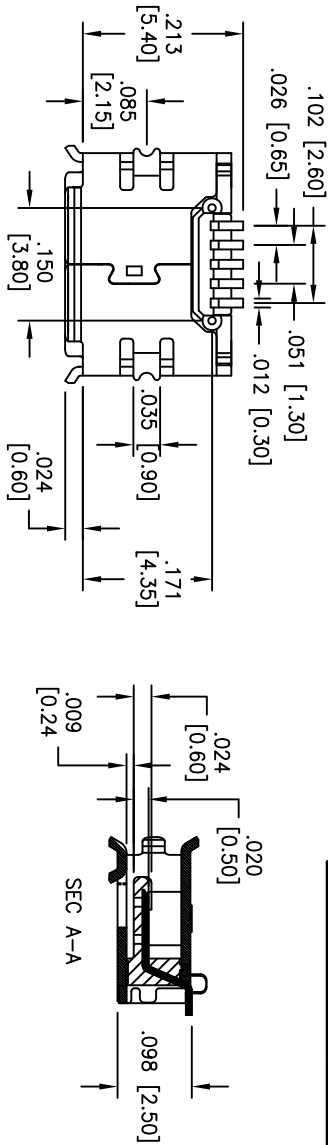
3

2

1

APPROVED: _____
 DATE: _____ TITLE: _____

Rev	AWO #	Description	Date	Appr
-		RELEASED	6/27/07	
A		REDRAWN	2/10/10	



RECOMMENDED PCB LAYOUT

SPECIFICATIONS:
 Material: Insulator: LCP, rated UL 94V-0
 Insulator color: Black
 Contacts: Brass
 Shell: Stainless Steel, Nickel over plated
 Plating: Gold Flash over Nickel on contact area, Tin over Copper underplate on tails.
 Electrical: Current rating: 1.8 Amp max.
 Contact resistance: 30 mohms max.
 Insulation resistance: 100 Mohms min. @ 500 VDC
 Dielectric withstanding voltage: 100 VAC for 1 minute
 Temperature Rating: Operating temperature: -55°C to +105°C
 Environmental: Lead free, RoHS compliant.
 Recommended soldering temp: 260°C for 5 sec.

ADAM TECH
 909 Railway Avenue, Union, NJ 07083
 Phone: 908-687-5000 Fax: 908-687-5710

UNLESS OTHERWISE SPECIFIED ALL DIMENSIONS ARE INCHES [MM] TOLERANCES: EXCEPT AS NOTED INCHES
 X .10 ± .020 ØXX ± .015
 .XX ± .015 ØXXX ± .010
 .XXX ± .015
 APPROVALS: _____ DATE: _____
 DRAWN: SS 6/27/07
 CHECKED: _____
 APPROVED: _____

TITLE		SIZE	PART NO.	REV.
MICRO USB, TYPE AB, SINGLE PORT RIGHT ANGLE, SMT, TAPE AND REEL		X	MCR-AB-S-RA-TSMT-P-TR	A
REF:	S00126T	SCALE:	NTS	SHEET 1 OF 1

6

5

4

3

2

1