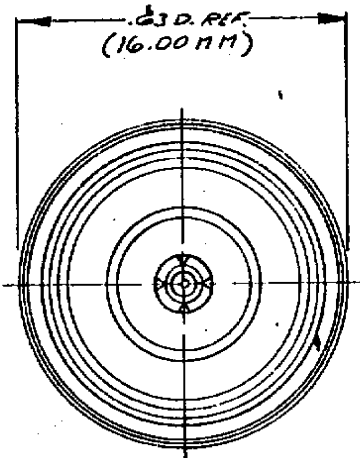
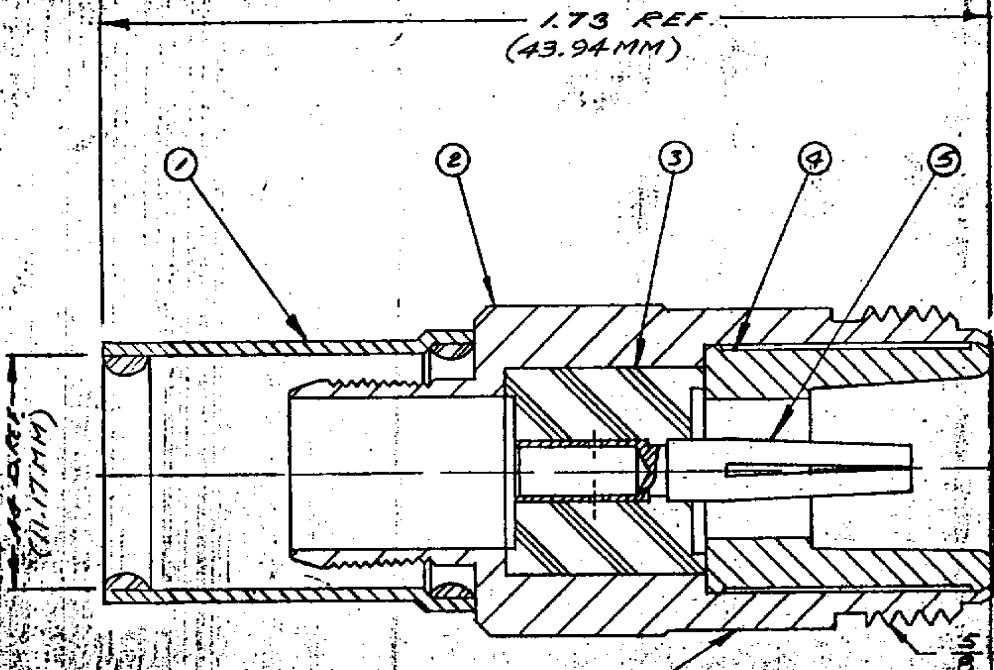


DRAW NO.	DESCRIPTION	MADE FROM
----------	-------------	-----------



- NOTES:**
- FOR USE WITH RG-393/U CABLE.
  - FOR CABLING INSTRUCTIONS SEE CP-5402.
  - FOR CABLE TRIMMING USE KTV-150 & KTD-130
  - FOR FORMING USE CRIMP DIE SIZE 105.
  - ITEM ⑤ TO BE SUPPLIED UNASSEMBLED.
  - ITEMS ①, ② & ④ TO HAVE TR-5 FINISH.
  - MARK PACKAGE: KINGS 1203-4-9  
XXXX (DATE CODE)

**UNLESS OTHERWISE SPECIFIED:**

- |  |  |
|--|--|
| 1. TOLERANCES: FRACTIONS & 2 PLACE DECIMALS ± .010   | 2. REMOVE ALL BURRS, BREAK SHARP EDGES .005 MAX. |
| 3 PLACE DECIMALS ± .004  | 3. NO FILLETS PERMITTED.                         |
| T. I. R. CONCENTRICITY OF ANY 2 DIAMETERS MAY NOT EXCEED HALF THE SUM OF THEIR TOLERANCES. | 4. SURFACE ROUGHNESS 63 MICROINCHES RMS MAX.     |
|  | 5. ALL DIMENSIONS PRIOR TO PLATING.              |

S-D

1203-4-9

REVISIONS	
ISSUE	CHANGES
0	ER 29749 L1 18 APR 89
1	CN 31068 C KH 10AUG89

MASTER

S-D

USED ON:
REF: BOEING
FINISH:
SPEC. KER 10004
MATL:
SPEC:

N JACK

ITEM	REQ'D	DESCRIPTION	PART NO.
5	1	N CAPTIVE CRIMP CONTACT F	1-534-68MA9
4	1	BUSHING	
3	1	INSULATOR	
2	1	K-GRIP BODY	
1	1	W/P K-GRIP SLEEVE	N-59-190-2-M06

DRAWN: MM	DATE: 18 APR 89
APPR: [Signature]	DATE: 18 APR 89

KINGS ELECTRONICS  
40 MARBLEDALE ROAD  
TUCKAHOE, N. Y. 10707

1203-4-9

S-D