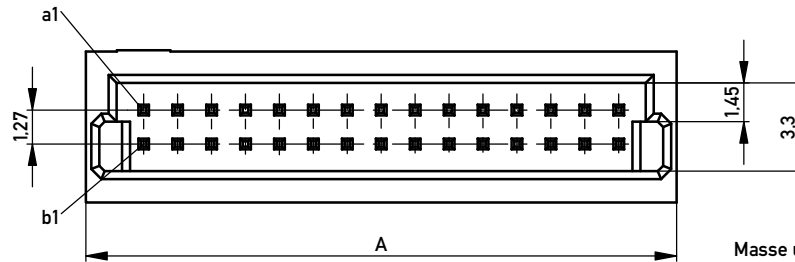
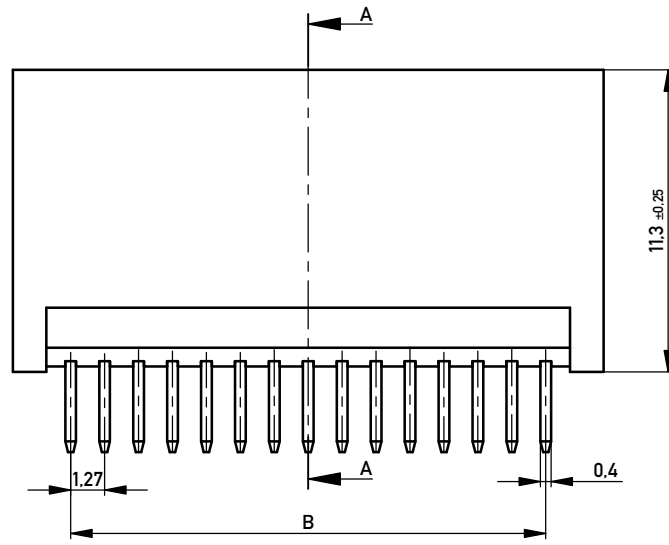
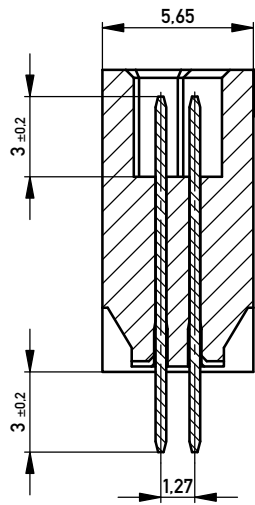
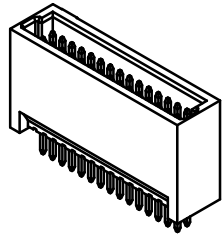


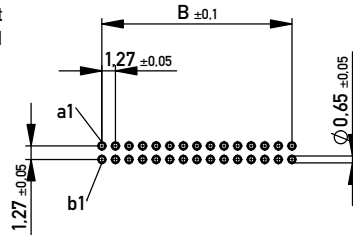
SCHNITT A-A



M 2 : 1



Layout  
M 2 : 1



Verpackung Stange / Stange & Ansaughaube  
packaging tube / tube&cap

100	9
80	11
70	12
60	14
50	17
40	21
30	27
20	38
10	64
Polzahl No. of positions	Stück / pieces

Masse und Toleranzen in Übereinstimmung mit ANSI Y15.5M-1994 /  
Interpret dimensions according to ANSI Y15.5M-1994

109367	109358	109349	109340	100	66.56	62.23
109366	109357	109348	109339	80	53.86	49.53
109365	109356	109347	109338	70	47.51	43.18
109364	109355	109346	109337	60	41.16	36.83
109363	109354	109345	109336	50	34.81	30.48
109362	109353	109344	109335	40	28.46	24.13
109361	109352	109343	109334	30	22.11	17.78
109360	109351	109342	109333	20	15.76	11.43
109359	109350	109341	109332	10	9.41	5.08
Id-Nr. tube&cap 100 mating- cycles	Id-Nr. tube&cap 10 mating- cycles	Id-Nr. tube 100 mating- cycles	Id-Nr. tube 10 mating- cycles	Polzahl no of positions	Mass A	Mass B

Information:	Tolerances	 All Dimensions in mm	Scale	5:1
	All rights reserved. Only for Information. To ensure that this is the latest version of this drawing, please contact one of the ERNI companies before using.			
Subject to modification without prior notice. Drawing will not be updated.		Designation <b>MiniMez Vertical Male DIP                  without pegs 7,4mm</b>		
www.ERNI.com		<b>109331</b>		I A3
Index	Date	Class MINIMEZ		

Copyright by ERNI GmbH.  
 Proprietary notice pursuant to ISO 9006 to be observed.