

New Jersey Semi-Conductor Products, Inc.

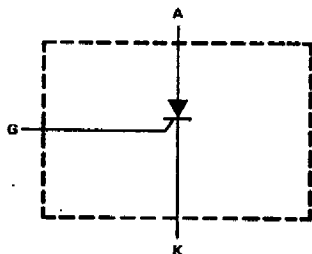
20 STERN AVE.
SPRINGFIELD, NEW JERSEY 07081
U.S.A.

TELEPHONE: (973) 376-2922
(212) 227-6005
FAX: (973) 376-8960

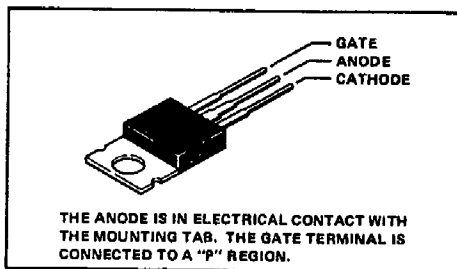
TIC106A, TIC106B, TIC106C, TIC106D, TIC106E, TIC106F, TIC106M P-N-P-N SILICON REVERSE-BLOCKING TRIODE THYRISTORS

- Silicon Controlled Rectifiers
- 50 V to 600 V
- 5 A DC
- 30 A Surge Current
- MAX I_{GT} of 200 A

device schematic



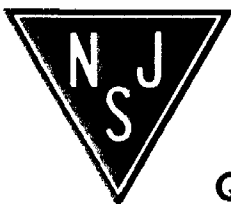
TO-220AB PACKAGE



absolute maximum ratings at 25°C case temperature (unless otherwise noted)

	TIC106F	TIC106A	TIC106B	TIC106C
Repetitive peak off-state voltage, V _{DRM} (see Note 1)	50 V	100 V	200 V	300 V
Repetitive peak reverse voltage, V _{RRM}	60 V	100 V	200 V	300 V
Continuous on-state current at (or below) 80°C case temperature (see Note 2)	5 A			
Average on-state current (180° conduction angle) at (or below) 80°C case temperature (see Note 3)	3.2 A			
Surge on-state current (see Note 4)	30 A			
Peak positive gate current (pulse duration < 300 μs)	0.2 A			
Peak gate power dissipation (pulse duration < 300 μs)	1.3 W			
Average gate power dissipation (see Note 5)	0.3 W			
Operating case temperature range	- 40°C to 110°C			
Storage temperature range	- 40°C to 125°C			
Lead temperature 1,6 mm (1/16 inch) from case for 10 seconds	230°C			

- NOTES:
1. These values apply when the gate-cathode resistance R_{GK} = 1 kΩ.
 2. These values apply for continuous d-c operation with resistive load. Above 80°C derate according to Figure 3.
 3. This value may be applied continuously under single-phase 50-Hz half-sine-wave operation with resistive load. Above 80°C derate according to Figure 3.
 4. This value applies for one 50-Hz half-sine-wave when the device is operating at (or below) rated values of peak reverse voltage and on-state current. Surge may be repeated after the device has returned to original thermal equilibrium.
 5. This value applies for a maximum averaging time of 20 ms.



NJ Semi-Conductors reserves the right to change test conditions, parameter limits and package dimensions without notice. Information furnished by NJ Semi-Conductors is believed to be both accurate and reliable at the time of going to press. However, NJ Semi-Conductors assumes no responsibility for any errors or omissions discovered in its use. NJ Semi-Conductors encourages customers to verify that datasheets are current before placing orders.

Quality Semi-Conductors

**TIC106A, TIC106B, TIC106C, TIC106D,
TIC106E, TIC106F, TIC106M
P-N-P-N SILICON REVERSE-BLOCKING TRIODE THYRISTORS**

absolute maximum ratings at 25°C case temperature (unless otherwise noted)

	TIC106D	TIC106E	TIC106M
Repetitive peak off-state voltage, V_{DRM} (see Note 1)	400 V	500 V	600 V
Repetitive peak reverse voltage, V_{RRM}	400 V	600 V	600 V
Continuous on-state current at (or below) 80°C case temperature (see Note 2)	5 A		
Average on-state current (180° conduction angle) at (or below) 80°C case temperature (see Note 3)	3.2 A		
Surge on-state current (see Note 4)	30 A		
Peak positive gate current (pulse duration $\leq 300 \mu s$)	0.2 A		
Peak gate power dissipation (pulse duration $\leq 300 \mu s$)	1.3 W		
Average gate power dissipation (see Note 5)	0.3 W		
Operating case temperature range	-40°C to 110°C		
Storage temperature range	-40°C to 125°C		
Lead temperature 1,6 mm (1/16 inch) from case for 10 seconds	230°C		

- NOTES: 1. These values apply when the gate-cathode resistance $R_{GK} = 1 \text{ k}\Omega$.
 2. These values apply for continuous d-c operation with resistive load. Above 80°C derate according to Figure 3.
 3. This value may be applied continuously under single-phase 50-Hz half-sine-wave operation with resistive load. Above 80°C derate according to Figure 3.
 4. This value applies for one 50-Hz half-sine-wave when the device is operating at (or below) rated values of peak reverse voltage and on-state current. Surge may be repeated after the device has returned to original thermal equilibrium.
 5. This value applies for a maximum averaging time of 20 ms.

electrical characteristics at 25°C case temperature (unless otherwise noted)

PARAMETER	TEST CONDITIONS	MIN	TYP	MAX	UNIT
I_{DRM} Repetitive Peak Off-State Current	$V_D = \text{Rated } V_{DRM}$, $R_{GK} = 1 \text{ k}\Omega$, $T_C = 110^\circ\text{C}$		400		μA
I_{RRM} Repetitive Peak Reverse Current	$V_R = \text{Rated } V_{RRM}$, $I_G = 0$, $T_C = 110^\circ\text{C}$		1		mA
I_{GT} Gate Trigger Current	$V_{AA} = 6 \text{ V}$, $R_L = 100 \Omega$, $t_w(g) \geq 20 \mu s$		60	200	μA
V_{GT} Gate Trigger Voltage	$V_{AA} = 6 \text{ V}$, $R_L = 100 \Omega$, $R_{GK} = 1 \text{ k}\Omega$, $t_w(g) \geq 20 \mu s$, $T_C = -40^\circ\text{C}$		1.2		V
	$V_{AA} = 6 \text{ V}$, $R_L = 100 \Omega$, $R_{GK} = 1 \text{ k}\Omega$, $t_w(g) \geq 20 \mu s$	0.4	0.6	1	
I_H Holding Current	$V_{AA} = 6 \text{ V}$, $R_{GK} = 1 \text{ k}\Omega$, $T_C = -110^\circ\text{C}$		0.2		mA
	$V_{AA} = 6 \text{ V}$, $R_{GK} = 1 \text{ k}\Omega$, Initiating $I_T = 10 \text{ mA}$		5		
I_{TM} Peak On-State Voltage	$I_{TM} = 5 \text{ A}$, See Note 6		1.7		V
dv/dt Critical Rate of Rise of Off-State Voltage	$V_D = \text{Rated } V_D$, $R_{GK} = 1 \text{ k}\Omega$, $T_C = 110^\circ\text{C}$		10		V/ μs

NOTE 6: These parameters must be measured using pulse techniques, $t_w = 300 \mu s$, duty cycle $\leq 2\%$. Voltage-sensing contacts, separate from the current-carrying contacts, are located within 3,2 mm (1/8 inch) from the device body.

thermal characteristics

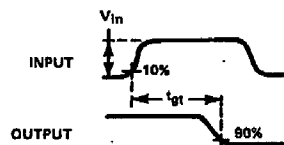
PARAMETER	MIN	TYP	MAX	UNIT
$R_{\theta JC}$		3.8		$^\circ\text{C/W}$
$R_{\theta JA}$		62.6		$^\circ\text{C/W}$

**TIC106A, TIC106B, TIC106C, TIC106D,
TIC106E, TIC106F, TIC106M**
P-N-P-N SILICON REVERSE-BLOCKING TRIODE THYRISTORS

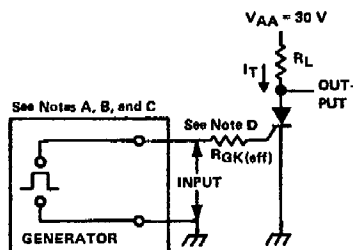
resistive-load switching characteristics at 25°C case temperature

PARAMETER	TEST CONDITIONS	MIN	TYP	MAX	UNIT
t_{gt}	Gate-Controlled Turn-On Time $V_{AA} = 30\text{ V}$, $V_{in} = 50\text{ V}$, See Figure 1	$R_L = 6\ \Omega$	$R_{GK(off)} = 5\text{ k}\Omega$	1.75	μs
t_q	Circuit-Commutated Turn-Off Time See Figure 2	$R_L = 6\ \Omega$	$I_{RM} = 8\text{ A}$	7.7	

PARAMETER MEASUREMENT INFORMATION

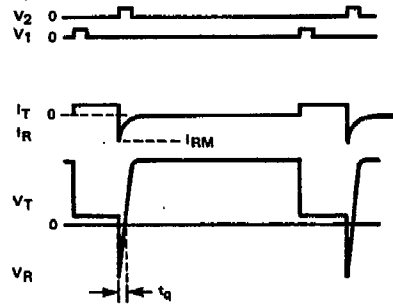


VOLTAGE WAVEFORMS

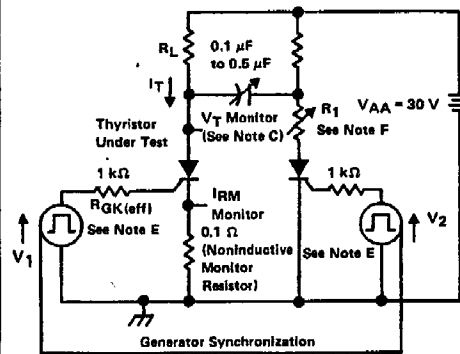


TEST CIRCUIT

FIGURE 1. GATE-CONTROLLED TURN-ON TIME



WAVEFORMS



TEST CIRCUIT

FIGURE 2. CIRCUIT-COMMUTATED TURN-OFF TIME

- NOTES:
- V_{in} is measured with gate and cathode terminals open.
 - The input waveform of Figure 1 has the following characteristics: $t_r < 40\text{ ns}$, $t_w > 20\ \mu\text{s}$.
 - Waveforms are monitored on an oscilloscope with the following characteristics: $t_r < 14\text{ ns}$, $R_{in} > 10\text{ M}\Omega$, $C_{in} < 12\text{ pF}$.
 - $R_{GK(off)}$ includes the total resistance of the generator and the external resistor.
 - Pulse generators for V_1 and V_2 are synchronized to provide an anode current waveform with the following characteristics: $t_w = 50\text{ to }300\ \mu\text{s}$, duty cycle = 1%. The pulse widths of V_1 and V_2 are $\geq 10\ \mu\text{s}$.
 - Resistor R_1 is adjusted for $I_{RM} = 8\text{ A}$.