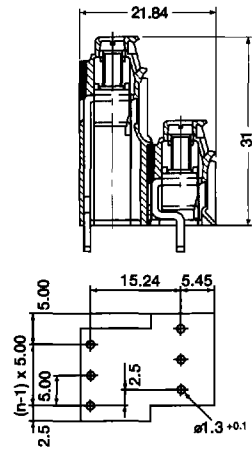


Printed Circuit Board Terminal Blocks

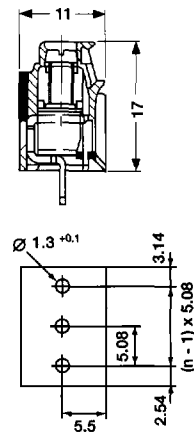
LP Series

5.00/5.08 mm Pitch

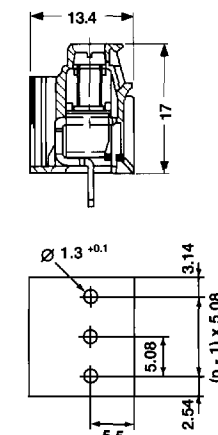
LP 2N/5.00
Double-level
90° orientation
Low profile/offset left



LP 5.08/90
Single-level
90° orientation
without test points



LPP 5.08/90
Single-level
90° orientation
with test points



Rated Voltage	300 V	300 V	250 V	300 V	300 V	250 V	300 V	300 V	250 V		
Rated Current	10 A	10 A	24 A	10 A	10 A	25 A	10 A	10 A	25 A		
Wire Size	#26...12 AWG	#26...12 AWG	2.5 mm ²	#26...12 AWG	#26...12 AWG	2.5 mm ²	#26...12 AWG	#26...12 AWG	2.5 mm ²		
Strip Length	7 mm	7 mm	7 mm	7 mm	7 mm	7 mm	7 mm	7 mm	7 mm		
Torque Nm (lb. in.)	0.5 (4.4)	0.5 (4.4)	0.5 (4.4)	0.5 (4.4)	0.5 (4.4)	0.5 (4.4)	0.5 (4.4)	0.5 (4.4)	0.5 (4.4)		
Pin Length	4.5 mm	4.5 mm	4.5 mm	4.5 mm	4.5 mm	4.5 mm	4.5 mm	4.5 mm	4.5 mm		
4	LP 2N/5.00/4	163517		2	LP 5.08/90/2	159454	169604	2	LPP 5.08/90/2	159460	169712
6	LP 2N/5.00/6	162557		3	LP 5.08/90/3	159455	169605	3	LPP 5.08/90/3	159461	169713
8	LP 2N/5.00/8	159644		4	LP 5.08/90/4	995132	995153	4	LPP 5.08/90/4	995174	995195
10	LP 2N/5.00/10	159648		5	LP 5.08/90/5	995133	995154	5	LPP 5.08/90/5	995175	995196
12	LP 2N/5.00/12	163271		6	LP 5.08/90/6	995134	995155	6	LPP 5.08/90/6	995176	995197
14	LP 2N/5.00/14	163272		7	LP 5.08/90/7	995135	995156	7	LPP 5.08/90/7	995177	995198
16	LP 2N/5.00/16	159654		8	LP 5.08/90/8	995136	995157	8	LPP 5.08/90/8	995178	995199
18	LP 2N/5.00/18	163273		9	LP 5.08/90/9	995137	995158	9	LPP 5.08/90/9	995179	995200
20	LP 2N/5.00/20	159658		10	LP 5.08/90/10	995138	995159	10	LPP 5.08/90/10	995180	995201
22	LP 2N/5.00/22	163274		11	LP 5.08/90/11	995139	995160	11	LPP 5.08/90/11	995181	995202
24	LP 2N/5.00/24	159662		12	LP 5.08/90/12	995140	995161	12	LPP 5.08/90/12	995182	995203
26	LP 2N/5.00/26	163275		13	LP 5.08/90/13	995141	995162	13	LPP 5.08/90/13	995183	995204
28	LP 2N/5.00/28	163276		14	LP 5.08/90/14	995142	995163	14	LPP 5.08/90/14	995184	995205
30	LP 2N/5.00/30	159666		15	LP 5.08/90/15	995143	995164	15	LPP 5.08/90/15	995185	995206
32	LP 2N/5.00/32	163277		16	LP 5.08/90/16	995144	995165	16	LPP 5.08/90/16	995186	995207
34	LP 2N/5.00/34	163278		17	LP 5.08/90/17	995145	995166	17	LPP 5.08/90/17	995187	995208
36	LP 2N/5.00/36	163279		18	LP 5.08/90/18	995146	995167	18	LPP 5.08/90/18	995188	995209
38	LP 2N/5.00/38	163280		19	LP 5.08/90/19	995147	995168	19	LPP 5.08/90/19	995189	995210
40	LP 2N/5.00/40	163281		20	LP 5.08/90/20	995148	995169	20	LPP 5.08/90/20	995190	995211
42	LP 2N/5.00/42	163282		21	LP 5.08/90/21	995149	995170	21	LPP 5.08/90/21	995191	995212
44	LP 2N/5.00/44	163283		22	LP 5.08/90/22	995150	995171	22	LPP 5.08/90/22	995192	995213
46	LP 2N/5.00/46	163284		23	LP 5.08/90/23	995151	995172	23	LPP 5.08/90/23	995193	995214
48	LP 2N/5.00/48	163285		24	LP 5.08/90/24	995152	995173	24	LPP 5.08/90/24	995194	995215

*Pending

Notes: Other solder pin lengths are available upon request.
 See pages 6/21-24 for marking materials and other accessories.