



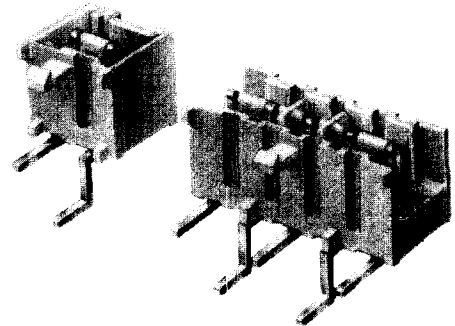
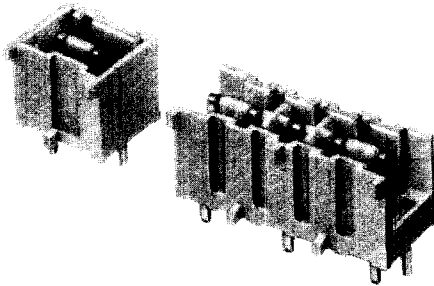
# 5 mm (.197") CENTER

Approvals: UL - CSA - DIN

## SHROUDED HEADERS for TL 1 Card Edge Connector

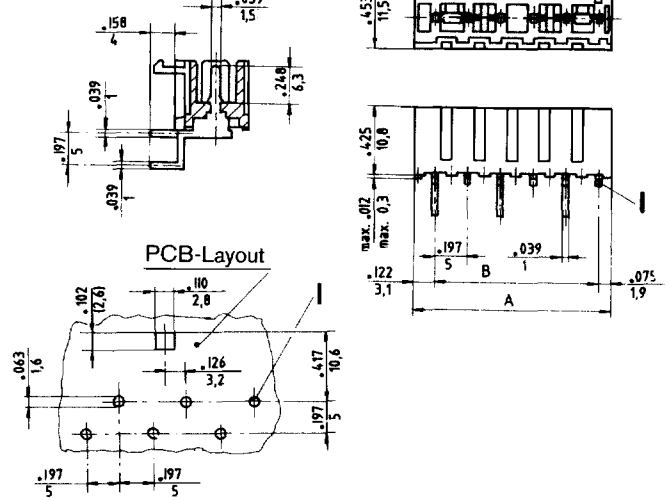
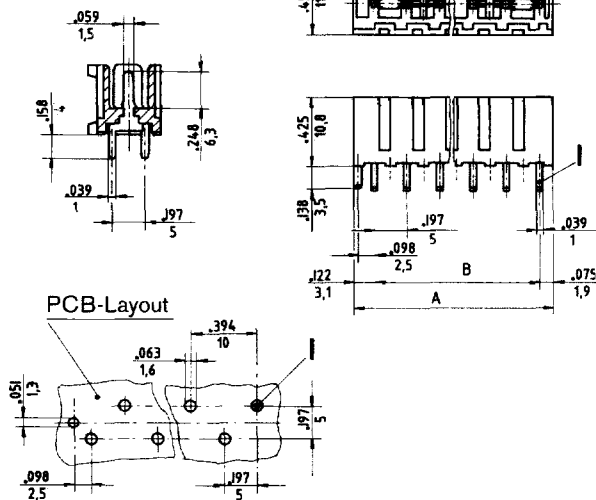
### 8180 Series

### 8200 Series



4 - 12-way

4 - 12-way



Specifications		Dimensions		Pos.	Ordering Information	
		A (Inch - mm)	B (Inch - mm)		8180 Series	8200 Series
Contact spacing:	5 mm (.197")	.472 - 12	.197 - 5	2	MTL 1 S 8182-6-0-202	MTL 1 S 8202-6-0-202
Positions	2 - 12	.669 - 17	.394 - 10	3	MTL 1 S 8183-6-0-303	MTL 1 S 8203-6-0-303
Max. current load:	6 A/140° F (60° C)	.787 - 20	.591 - 15	4	MTL 1 S 8184-6-0-404	MTL 1 S 8204-6-0-404
Nom. voltage:	250 V <sub>eff</sub>	.984 - 25	.787 - 20	5	MTL 1 S 8185-6-0-505	MTL 1 S 8205-6-0-505
Temperature range:	- 40° F to + 221° F - 40° C to + 105°	1.181 - 30	.984 - 25	6	MTL 1 S 8186-6-0-606	MTL 1 S 8206-6-0-606
(see 6690 Series)		1.378 - 35	1.181 - 30	7	MTL 1 S 8187-6-0-707	MTL 1 S 8207-6-0-707
		1.575 - 40	1.378 - 35	8	MTL 1 S 8188-6-0-808	MTL 1 S 8208-6-0-808
		1.772 - 45	1.575 - 40	9	MTL 1 S 8189-6-0-909	MTL 1 S 8209-6-0-909
		1.969 - 50	1.772 - 45	10	MTL 1 S 8190-6-0-1010	MTL 1 S 8210-6-0-1010
		2.165 - 55	1.969 - 50	11	MTL 1 S 8191-6-0-1111	MTL 1 S 8211-6-0-1111
		2.362 - 60	2.165 - 55	12	MTL 1 S 8192-6-0-1212	MTL 1 S 8212-6-0-1212