

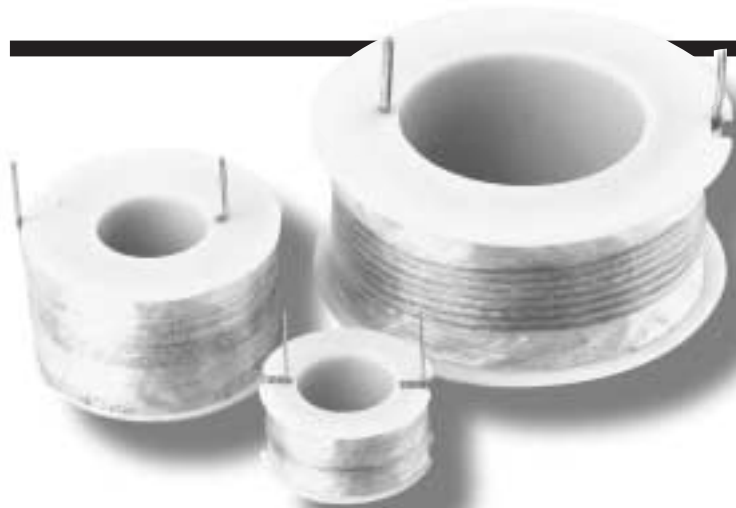


# RL-1233

## RL-1238, RL-1239

### AIR CORE INDUCTORS

BOBBIN WOUND



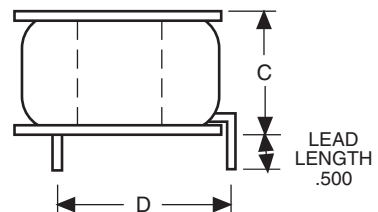
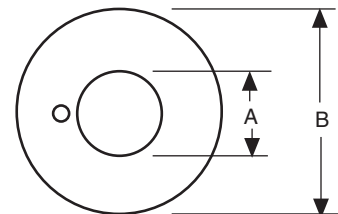
Renco Air Core Inductors are available in 137 different values ranging from 0.56 $\mu$ H to 33,000 $\mu$ H (33mH) with current ratings, depending on type, from 1.4 Amps to 22 Amps. This series of Air Core Inductors has the advantage of handling high AC currents without going into saturation as metal core inductors would. The wide range of inductances and resistance values offers great flexibility in circuit design.

The inductors are supplied ready for PC board insertion or, as an option, with leads for wiring directly into circuits.

### Typical Applications:

- Power Line Filters
- Switching Regulated Power Supplies
- Audio Filters
- Speaker Crossover Networks
- Power Amplifiers
- Power RF Suppression Circuits
- Chokes

Renco Part No.	A	B	C	D
RL-1233	.63	1.16	.56	See Table
RL-1238	.75	1.75	.94	1.31
RL-1239	1.69	3.00	1.25	2.25



ALL DIMENSIONS IN INCHES



### RENCO ELECTRONICS, INC.

595 International Place, Rockledge, FL 32955-4200 USA

(321) 637-1000 • Toll Free Engineering Hot line 800-645-5828

SINCE 1955 Fax: (321) 637-1600 Web Site: [www.rencousa.com](http://www.rencousa.com) E-mail: [sales@rencousa.com](mailto:sales@rencousa.com)

<b>RL-1233</b>				
Renco Part No.	L $\pm$ 15%* $\mu$ H	RDC Max. (Ohms)	Suggested RMS Current Rating	"D" DIM Ref.
RL-1233-0.56	.56	0.006	8.0	.823
RL-1233-0.68	.68	0.007	8.0	.823
RL-1233-0.82	.82	0.008	8.0	.823
RL-1233-1.0	1.0	0.009	8.0	.823
RL-1233-1.2	1.2	0.010	8.0	.823
RL-1233-1.5	1.5	0.011	8.0	.823
RL-1233-1.8	1.8	0.013	8.0	.823
RL-1233-2.2	2.2	0.014	8.0	.823
RL-1233-2.7	2.7	0.015	8.0	.823
RL-1233-3.3	3.3	0.016	8.0	.823
RL-1233-3.9	3.9	0.017	8.0	.823
RL-1233-4.7	4.7	0.019	8.0	.823
RL-1233-5.6	5.6	0.022	8.0	.823
RL-1233-6.8	6.8	0.024	8.0	.823
RL-1233-8.2	8.2	0.026	8.0	.823
RL-1233-10	10.0	0.030	8.0	.823
RL-1233-12	12.0	0.033	8.0	.823
RL-1233-15	15.0	0.038	8.0	.823
RL-1233-18	18.0	0.039	8.0	.823
RL-1233-22	22.0	0.053	4.0	.915
RL-1233-27	27.0	0.075	3.5	.862
RL-1233-33	33.0	0.080	3.5	.862
RL-1233-39	39.0	0.090	3.5	.862
RL-1233-47	47.0	0.100	3.5	.862
RL-1233-56	56.0	0.135	2.5	.862
RL-1233-68	68.0	0.151	2.5	.957
RL-1233-82	82.0	0.166	2.5	.957
RL-1233-100	100.0	0.230	2.0	.957
RL-1233-120	120.0	0.255	2.0	.957
RL-1233-150	150.0	0.285	2.0	.957
RL-1233-180	180.0	0.395	1.5	.957
RL-1233-220	220.0	0.542	1.3	.957
RL-1233-270	270.0	0.617	1.3	.957
RL-1233-330	330.0	0.830	1.0	.957
RL-1233-390	390.0	0.907	1.0	.957
RL-1233-470	470.0	0.978	1.0	.957
RL-1233-560	560.0	1.375	.8	.957
RL-1233-680	680.0	1.525	.8	.925

\* Values less than 10 $\mu$ H $\pm$ 20%



## RENCO ELECTRONICS, INC.

595 International Place, Rockledge, FL 32955-4200 USA

(321) 637-1000 • Toll Free Engineering Hot line 800-645-5828

Fax: (321) 637-1600 Web Site: [www.rencousa.com](http://www.rencousa.com) E-mail: [sales@rencousa.com](mailto:sales@rencousa.com)

<b>RL-1238</b>			
Renco Part No.	L ±15%* μH	RDC Max. (Ohms)	Suggested RMS Current Rating
RL-1238-1.0	1.0	0.0062	8.0
RL-1238-1.5	1.5	0.0078	8.0
RL-1238-1.8	1.8	0.0085	8.0
RL-1238-2.2	2.2	0.0093	8.0
RL-1238-2.7	2.7	0.0110	8.0
RL-1238-3.3	3.3	0.0120	8.0
RL-1238-3.9	3.9	0.0125	8.0
RL-1238-4.7	4.7	0.0140	8.0
RL-1238-5.6	5.6	0.0153	8.0
RL-1238-6.8	6.8	0.0170	8.0
RL-1238-8.2	8.2	0.0193	8.0
RL-1238-10	10.0	0.0220	8.0
RL-1238-12	12.0	0.0236	8.0
RL-1238-15	15.0	0.0260	8.0
RL-1238-18	18.0	0.0280	8.0
RL-1238-22	22.0	0.0300	8.0
RL-1238-27	27.0	0.0350	8.0
RL-1238-33	33.0	0.0390	8.0
RL-1238-39	39.0	0.0430	8.0
RL-1238-47	47.0	0.0470	8.0
RL-1238-56	56.0	0.0516	8.0
RL-1238-68	68.0	0.0576	8.0
RL-1238-82	82.0	0.063	8.0
RL-1238-100	100.0	0.070	8.0
RL-1238-120	120.0	0.0730	8.0
RL-1238-150	150.0	0.112	6.5
RL-1238-180	180.0	0.125	6.5
RL-1238-220	220.0	0.233	5.0
RL-1238-270	270.0	0.251	4.0
RL-1238-330	330.0	0.261	4.0
RL-1238-390	390.0	0.293	4.0
RL-1238-470	470.0	0.317	4.5
RL-1238-560	560.0	0.429	3.5
RL-1238-680	680.0	0.475	3.5
RL-1238-820	820.0	0.642	2.5
RL-1238-1000	1000.	0.700	2.5
RL-1238-1200	1200.	0.768	2.5
RL-1238-1500	1500.	1.09	2.0
RL-1238-2200	2200.	1.68	1.5
RL-1238-2700	2700.	2.3	1.3
RL-1238-3300	3300.	2.6	1.3
RL-1238-3900	3900.	2.8	1.3
RL-1238-4700	4700.	3.9	1.0
RL-1238-5600	5600.	4.3	1.0
RL-1238-6800	6800.	5.8	.8
RL-1238-8200	8200.	6.5	.8

\* Values less than 10μH±20%



## RENCO ELECTRONICS, INC.

✉ 595 International Place, Rockledge, FL 32955-4200 USA

☎ (321) 637-1000 • Toll Free Engineering Hot line 800-645-5828

📠 Fax: (321) 637-1600 🌐 Web Site: [www.rencousa.com](http://www.rencousa.com) ✉ E-mail: [sales@rencousa.com](mailto:sales@rencousa.com)

<b>RL-1239</b>			
Renco Part No.	L ±15%* μH	RDC Max. (Ohms)	Suggested RMS Current Rating
RL-1239-1.8	1.8	0.0060	13.0
RL-1239-2.2	2.2	0.0069	13.0
RL-1239-2.7	2.7	0.0077	13.0
RL-1239-3.9	3.9	0.0087	13.0
RL-1239-4.7	4.7	0.0107	13.0
RL-1239-5.6	5.6	0.0117	13.0
RL-1239-6.8	6.8	0.0126	13.0
RL-1239-8.2	8.2	0.0136	13.0
RL-1239-10	10.0	0.0157	13.0
RL-1239-12	12.0	0.0167	13.0
RL-1239-15	15.0	0.0180	13.0
RL-1239-18	18.0	0.0204	13.0
RL-1239-22	22.0	0.0216	13.0
RL-1239-27	27.0	0.0252	13.0
RL-1239-33	33.0	0.0276	13.0
RL-1239-39	39.0	0.0300	13.0
RL-1239-47	47.0	0.0336	13.0
RL-1239-56	56.0	0.0372	13.0
RL-1239-68	68.0	0.0420	13.0
RL-1239-82	82.0	0.0456	13.0
RL-1239-100	100.0	0.0516	13.0
RL-1239-120	120.0	0.0576	13.0
RL-1239-150	150.0	0.0678	13.0
RL-1239-180	180.0	0.0708	13.0
RL-1239-220	220.0	0.0804	13.0
RL-1239-270	270.	0.0876	8.5
RL-1239-330	330.	0.1200	8.5
RL-1239-390	390.	0.1596	6.5
RL-1239-470	470.	0.1836	6.5
RL-1239-560	560.	0.1968	6.5
RL-1239-680	680.	0.2712	5.5
RL-1239-820	820.	0.2976	5.5
RL-1239-1000	1000.	0.4175	4.0
RL-1239-1200	1200.	0.4560	4.0
RL-1239-1500	1500.	0.650	3.0
RL-1239-1800	1800.	0.7116	3.0
RL-1239-2200	2200.	0.7924	3.0
RL-1239-2700	2700.	1.07	2.5
RL-1239-3300	3300.	1.212	2.5
RL-1239-3900	3900.	1.320	2.5
RL-1239-4700	4700.	1.788	2.0
RL-1239-5600	5600.	1.968	2.0
RL-1239-6800	6800.	2.670	1.7
RL-1239-8200	8200.	2.976	1.7
RL-1239-10000	10000.0	4.260	1.4
RL-1239-12000	12000.0	4.596	1.4
RL-1239-15000	15000.0	5.664	1.4
RL-1239-18000	18000.0	7.188	1.0
RL-1239-22000	22000.0	7.932	1.0
RL-1239-27000	27000.0	10.704	0.8
RL-1239-33000	33000.0	11.868	0.8

**NOTES:**

1. -55°C to +130°C.
2. Non-listed values available.
3. Inductance measured @ 1KHz.
4. 1/2" leads tinned to within 1/16" of bobbin.
5. Special leads available on request.

\* Values less than 10μH±20%



## RENCO ELECTRONICS, INC.

595 International Place, Rockledge, FL 32955-4200 USA

(321) 637-1000 • Toll Free Engineering Hot line 800-645-5828

Fax: (321) 637-1600 Web Site: [www.rencousa.com](http://www.rencousa.com) E-mail: [sales@rencousa.com](mailto:sales@rencousa.com)