

SPECIFICATIONS

Friction Header Connector

Mechanical

Contact Retention Force: 1.36 KGF Min
Durability: 500 Cycles

HF11 Series

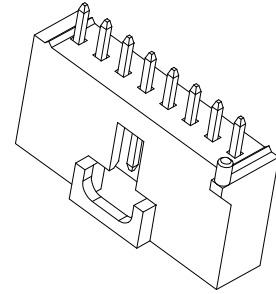
Friction T/H Type
2.54mm [.100"] Pitch

Electrical

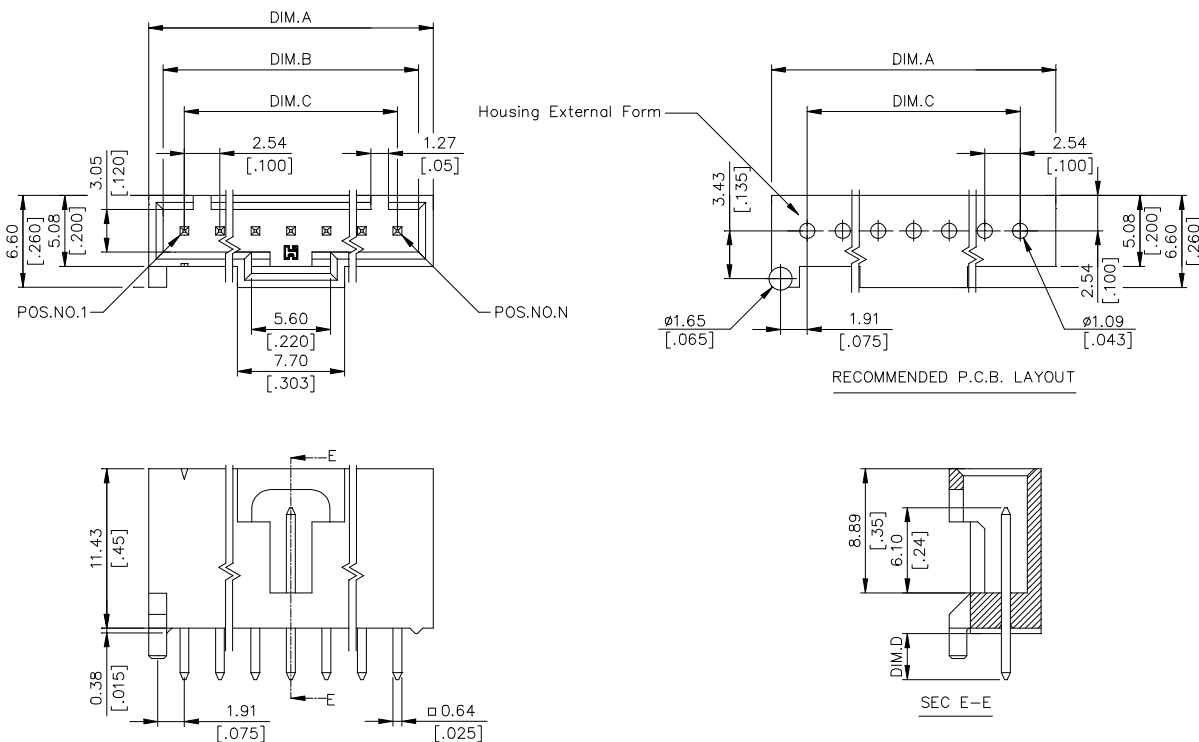
Voltage Rating: 600V
Current Rating: 3.0A per pin min
Contact Resistance: 30mW max
Insulation Resistance: 1000MW min

Physical

Housing: Thermoplastic, Glass Filled, UL94V-0 Rating
Contact: Copper Alloy
Plating: See "ORDERING INFORMATION"
Operating Temperature: -50 to +105



DRAWING



ORDERING INFORMATION

PRODUCT NO.: HF11***-**

Header _____
 High Friction Header _____
 Termination & Contact Type _____
 No. Of Pos _____
 2=2 Pos
 3=3 Pos
 4=4 Pos
 5=5 Pos
 6=6 Pos
 8=8 Pos
 9=9 Pos
 10=10 Pos

Optional For Modification Code
 NONE: NO GUIDE POST, DIM. D=3.30[.130]
 P1: ONE GUIDE POST, DIM. D=3.30[.130]
 C1: ONE GUIDE POST, DIM. D=2.30[.091]
 Optional For Housing Color
 N : HOUSING COLOR IVORY
 G : HOUSING COLOR GREEN
 U : HOUSING COLOR BLUE
 Y : HOUSING COLOR YELLOW
 A : HOUSING COLOR GRAY
 Optional For Plating
 0=100u" Tin/Lead
 1=Gold Flash
 E=100u" min. Tin with Lead free "RoHS Compliance"

HF1110*-***	10	27.99	25.91	22.86	
		[1.102]	[1.020]	[.900]	
HF1109*-***	9	25.45	23.37	20.32	
		[1.002]	[.920]	[.800]	
HF1108*-***	8	22.91	20.83	17.78	
		[.902]	[.820]	[.700]	
HF1106*-***	6	17.83	15.75	12.70	
		[.702]	[.620]	[.500]	
HF1105*-***	5	15.29	13.21	10.16	
		[.602]	[.520]	[.400]	
HF1104*-***	4	12.75	10.67	7.62	
		[.502]	[.420]	[.300]	
HF1103*-***	3	10.21	8.13	5.08	
		[.402]	[.320]	[.200]	
HF1102*-***	2	7.62	5.55	2.54	
		[.300]	[.219]	[.100]	
P/N		POS.	DIM. A	DIM. B	DIM. C