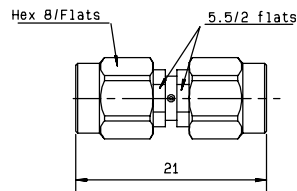
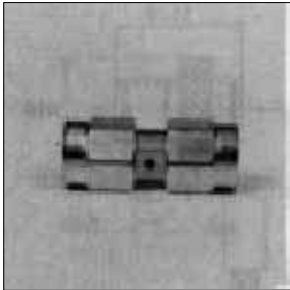
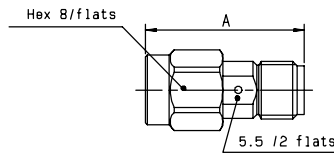




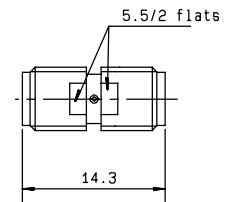
## IN SERIES ADAPTERS



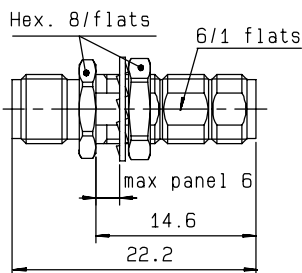
**Fig. 1**



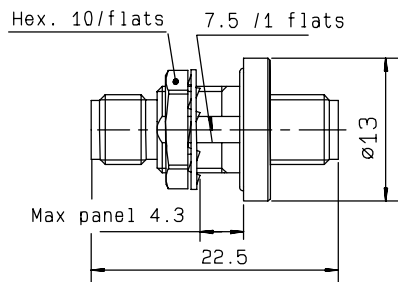
**Fig. 2**



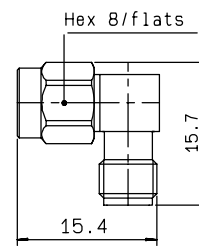
**Fig. 3**



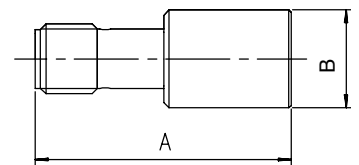
**Fig. 4**



**Fig. 5**



**Fig. 6**

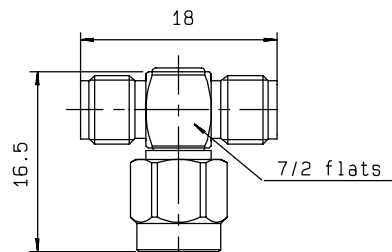
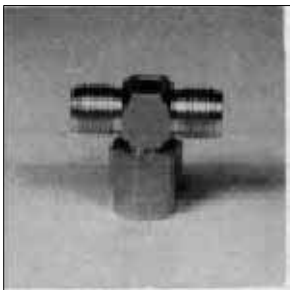


**Fig. 7**

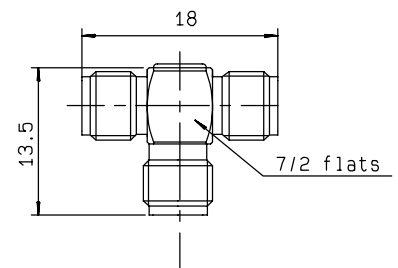
Part number (gold)	Part number (passivated)	Fig.	Captive center contact	Dimensions (mm)		Cut out	Note
				A	B		
R125 703 000	R125 703 001	1	yes				male-male
R125 704 000	R125 704 001	2	yes	17.5			male-female
R125 705 000*	R125 705 001	3	yes				female-female
R125 720 000	R125 720 001	4	yes			P03	bulkhead female-female
R125 753 000	R125 753 001	5	yes			P12	bulkhead hermetically sealed female-female
R125 771 000	R125 771 001*	6	yes				right angle male-female
	R125 791 501	7	yes	23.3	8.9		PUSH-ON** male
	R125 792 501	7	yes	24.8	11		PUSH-ON** female

\*\* PUSH-ON adapter, see our catalog **D1036DE**

## TEE IN SERIES ADAPTERS



**Fig. 1**



**Fig. 2**

Part number (gold)	Part number (passivated)	Fig.	Captive center contact
R125 780 000	R125 780 001	1	yes
R125 781 000	R125 781 001	2	yes

\* packaging: 100 pieces. For unit packaging, add "W" after the P/N