


Single-Phase Full Wave Bridges

1.0 Amperes through 10.0 Amperes. For P.C. Board and Chassis Mounting



 This mark indicates recognition under the component program of Underwriters Laboratories, Inc.

Peak Inverse Voltage—Leg	50V	100V	200V	400V	600V*
1.0 Amp Series	CSB05	CSB1	CSB2	CSB4	CSB6
6.0 Amp Series	dc600.5	dc601	dc602	dc604	dc606
10.0 Amp Series	dc100.5	dc101	dc102	dc104	dc106

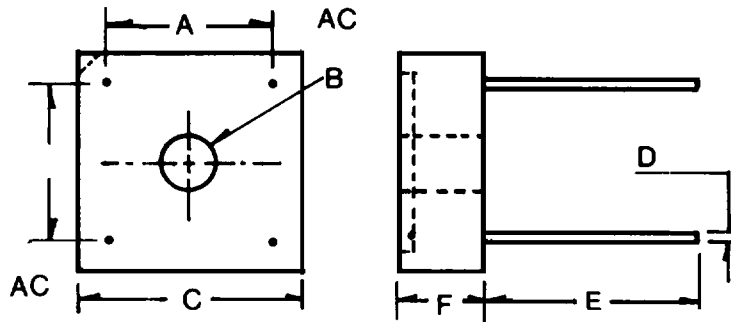
Electrical Characteristics Per Leg—At $T_A = 25^\circ\text{C}$ (Unless otherwise specified)

	CSB	dc6	dc1	
Maximum forward voltage drop— $V_F @ I_F = I_O$	1.2	1.3	1.3	Volts
Maximum DC reverse current @ PRV and $25^\circ\text{C}, I_R$	5.0	5.0	5.0	μA
Maximum peak surge current— I_{FSM} (8.3 ms)	50	100	150	Amp
Ambient operating temperature range— T_A	-55 to +150			$^\circ\text{C}$
Storage temperature range— T_{stg}	-55 to +150			$^\circ\text{C}$

*Please Note: Higher Voltages Available, Fast Recovery Available, Avalanche Types Available—Consult Factory

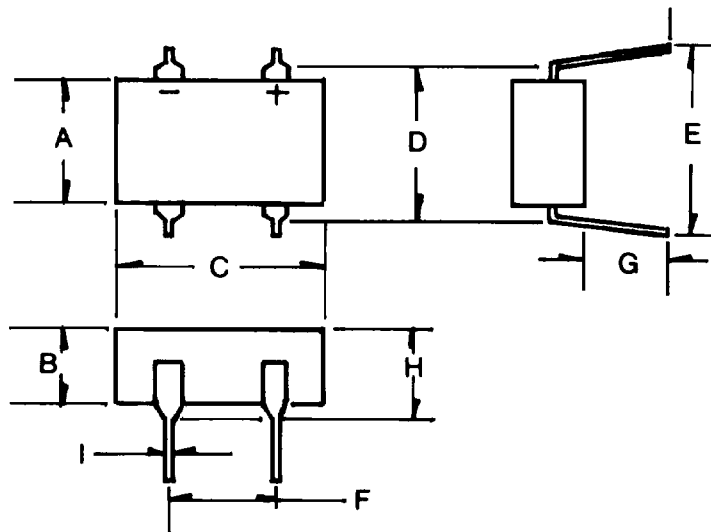
Packaging: dc6 Series, dc1 Series

Dimensions		Inches		MM	
	Min.	Max.	Min.	Max.	
A	.405	.445	10.5	11.3	
B	.137	.167	3.48	4.24	
C	.62	Max.	15.8	Max.	
D	.038	.042	.970	1.07	
E	1.0	—	25.4	—	
F	—	.21	—	5.4	



Packaging: CSB Series

Dimensions		Inches		MM	
	Min.	Max.	Min.	Max.	
A	.240	.260	6.10	6.60	
B	.122	.160	3.10	4.06	
C	.319	.390	8.10	9.91	
D	.280	.320	7.11	8.13	
E	.300	.340	7.62	8.38	
F	.190	.210	4.83	5.33	
G	.140	—	3.56	—	
H	—	.217	—	5.51	
I	.016	.022	.40	.56	



Imported and Distributed by

C&D Sales
A DEAN TECHNOLOGY COMPANY

Mailing Address: P.O. Box 2484, Farmingdale, NJ 07727

Telephone: (908) 938-4499 • FAX: 908 938-4451