

# Crystal band stop filter

## QBS78.6-2000/01



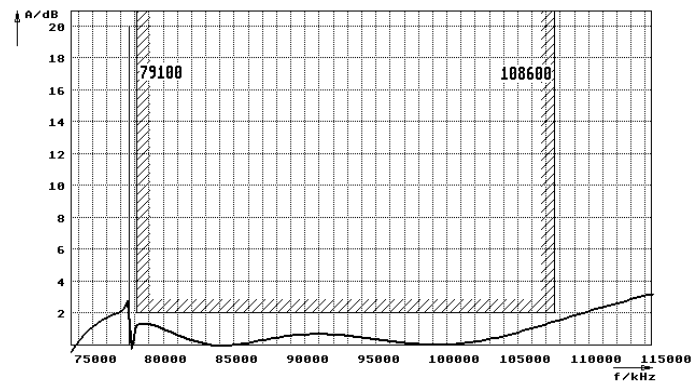
### Application

- 2 pol filter
- i.f.- filter
- use in mobile and stationary transceivers

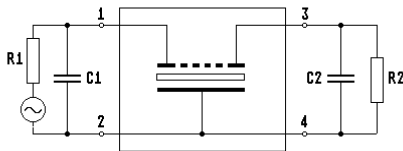
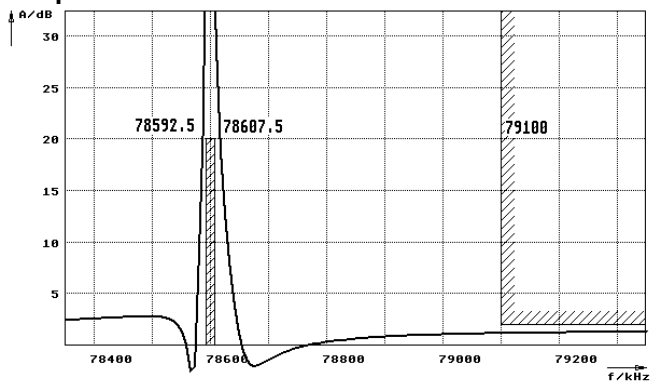
Limiting values		Unit	Value
Nominal frequency	$f_0$	MHz	78.6
Insertion loss	smallest attenuation in pass band	dB	< 3.0
Stop band attenuation	$f_0 \pm 7.5$ kHz	dB	> 20
Pass band at 2.0 dB		MHz	79.1.....108.6
Ripple in pass band		dB	< 2.0
Spurious responses	in pass band	dB	< 2
Terminating impedance Z			
R1  C1		Ohm/pF	50    0
R2  C2		Ohm/pF	50    0
Operating temp. range		°C	+0... +65
Storage temp. range		°C	-45... +85
Environment conditions			according to CF001

### Characteristics QBS78.6-2000/01

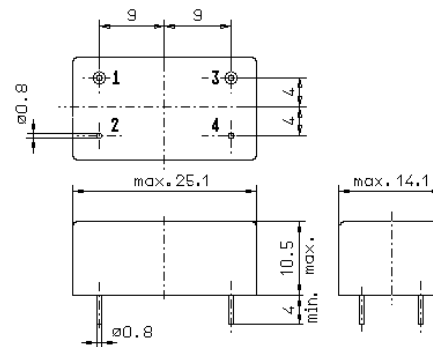
#### Pass band



#### Stop band



- Pin connections:
- 1 Input
  - 2 Ground-Input
  - 3 Output
  - 4 Ground-Output



GM3.1