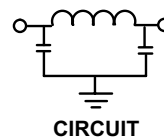
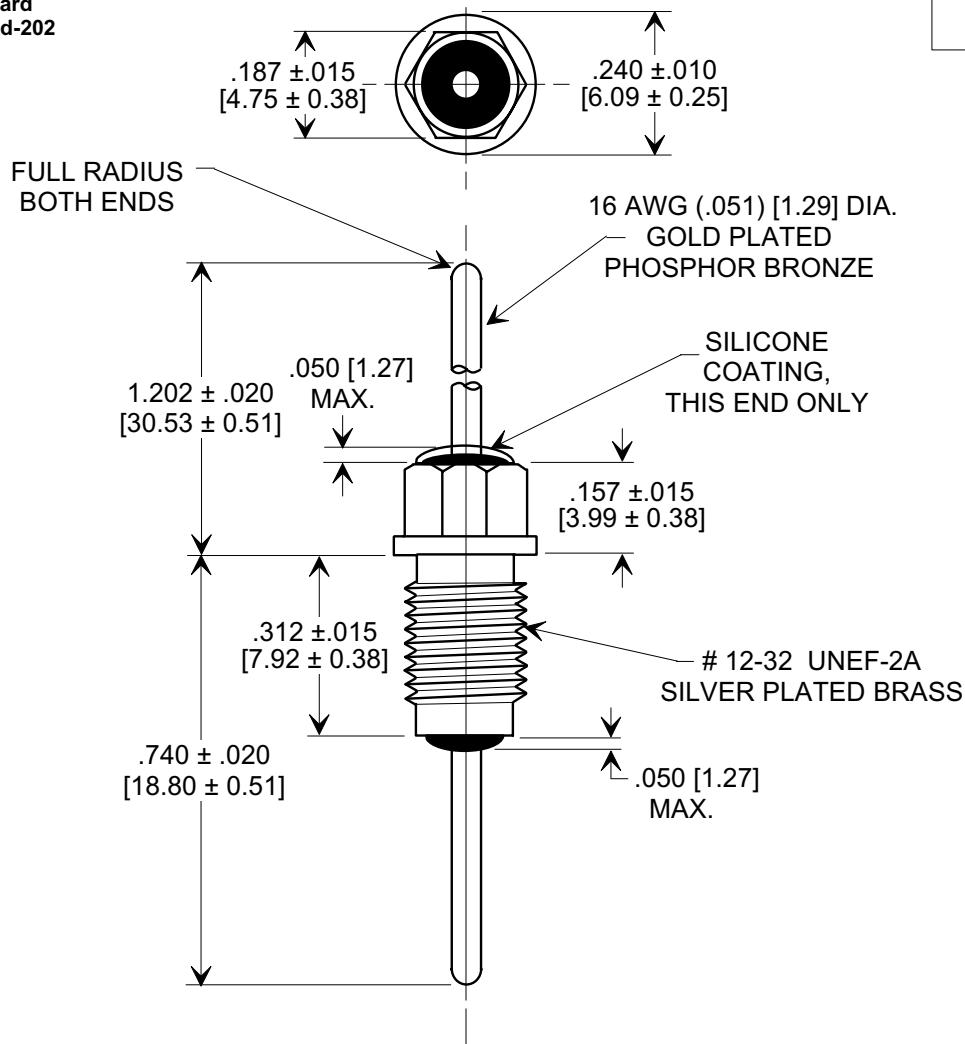
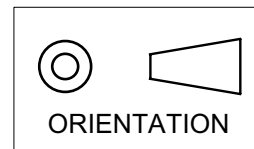


MARKETING SALES DRAWING
DIMENSIONS IN INCHES - DO NOT SCALE THIS DRAWING
DIMENSIONS IN METRIC - []

Electrical Testing
per Tusonix standard
test plans and Mil-Std-202
Test Methods.



NOTES:

- TUSONIX STANDARD PART NUMBER: 4203-068.
TUSONIX RoHS COMPLIANT PART NUMBER: 4203-068 LF.
CUSTOMER MUST SPECIFY STANDARD OR RoHS PART NUMBER WHEN ORDERING.
- LEAD FINISH: GOLD PLATED PHOSPHOR BRONZE.
- PART MARKING: TRADEMARK AND VARIATION NUMBER ON HEX FLATS.
STANDARD PART: BLACK INK. RoHS PART: GREEN INK.
- LEAD AND BUSHING TO BE CONCENTRIC WITHIN $.030$ ", [0.76] BOTH ENDS.
- ROSEMOUNT SPECIFICATION 03154-0107 SPECIAL CHARACTERISTIC PARAGRAPH 3.2: HI-POT TEST TO BE PERFORMED AT 1200 VAC (RMS) AT 60 Hz FOR 2 SECONDS.

CAPACITANCE (pF)		WORKING VOLTAGE (WVDC) (-55 °C TO 125°C)	CURRENT Idc	I R MIN. @ 60 VDC	HI-POT	MINIMUM NO LOAD INSERTION LOSS @ 25°C (dB) PER MIL-STD-220		
MIN.	MAX.					10 MHz	100 MHz	1 GHz
3000	5000	60	10 A	20 G Ω	SEE NOTE 5	5	45	70

REVISION RECORD Original Release C.O. 20020319-5-02 REVISED PER SK 7903-068. S.M. 09-05-03 20030903-1-06 DIM .240 WAS .250. ADDED AND REVISED NOTES. S.M. 11-15-05 20051027-3-08	0	TUSONIX TUCSON, ARIZONA	--TOLERANCES-- Unless Otherwise Specified	Title BUSHING STYLE EMI FILTER	
	1		DECIMAL ±	Drawn L.E. 03-22-03	Scale X 3
	2		ANGLES ±	Approved T.C. 03-22-03	
	A		4203-068		

X-2015 Rev-0