

**RFI Filter for Power Factor Corrected Power Supplies**

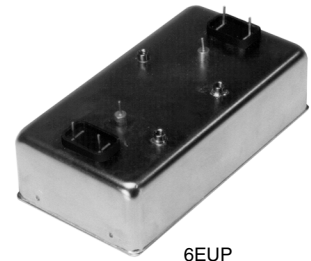
# U Series



**UL Recognized  
CSA Certified  
VDE Approved**



6EU1



6EUP

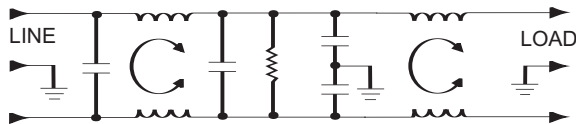
## U Series

The U series is designed to meet the RFI needs created by power factor corrected power supplies. This high performance filter offers a high impedance circuit to mismatch the power supply's impedance characteristics. The economical design allows superior performance at a reasonable price.

The PC board mountable version has a low profile case which adapts well to most modular power converter applications.

All models meet low leakage current requirements of VDE portable equipment, and (120 Volt) UL544 and UL2601 non-patient medical equipment.

## Electrical Schematic



Resistor location for reference only.

## Specifications

**Maximum leakage current, each line-to-ground**  
 @ 120 VAC 60 Hz: .30 mA  
 @ 250 VAC 50 Hz: .50 mA

**Hipot rating (one minute):**  
 line-to-ground 2250 VDC  
 line-to-line 1450 VDC

**Operating frequency:** 50/60 Hz

**Rated voltage (max.):** 250 VAC

**Rated current:** 6.5 amps

**Minimum insertion loss in dB:**  
 Line-to-ground in 50 ohm circuit

Current Rating	Frequency-MHz							
	.05	.1	.15	.5	1	5	10	30
6A	4	30	40	70	70	70	65	50

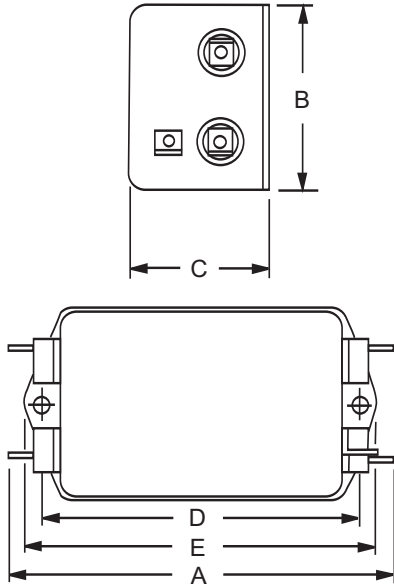
Line-to-line in 50 ohm circuit

Current Rating	Frequency-MHz							
	.05	.1	.15	.5	1	5	10	30
6A	10	35	45	70	70	70	65	55

# U Series

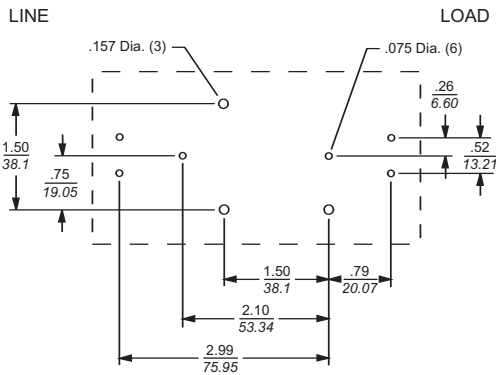
## Case Styles

### 6EU1



Typical dimensions:  
 Terminals: .250 [6.35] (5)      Holes: .07 [1.8] Dia.(4)  
 Slot: .07 x .16 [1.8 x 4.1]      Mounting holes: .188 [4.78] Dia. (2)

## Recommended PC Board Layout



## Case Dimensions

Part No.	A (max)	B (max)	C (max)	D $\pm .015$ $\pm .38$	E (max)
6EUP	4.70 119.4	2.51 63.8	1.22 31.0	—	—
6EU1	4.95 125.73	2.27 57.66	1.80 45.72	4.060 103.12	4.47 113.54

## Part Numbers

6EUP	6EU1
------	------

### 6EUP

