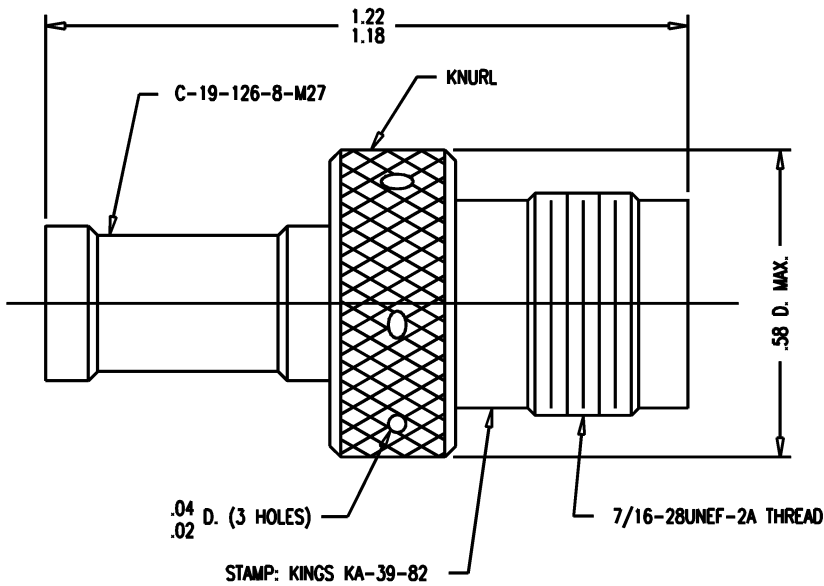


GSD

KA-39-82



NOTES:

1. FOR USE WITH RG-58C/U, BA-5903 & RAYCHEM 09-058 CABLES.
2. FOR CABLING INSTRUCTIONS SEE CP-5401.
3. FOR CRIMPING USE DIE KTH-2061.
4. INTERFACE PER MIL-STD-348, FIG. 313-2.
5. MARK PACKAGE: KINGS KA-39-82
XXXX (DATE CODE)
6. CENTER CONTACT, 1-570-26MA9, TO BE SUPPLIED UNASSEMBLED.
7. MATERIALS:
INSULATOR: TEFLON, ASTM-D-4894
CENTER CONTACT: BER. COP., ASTM-B-196
K-GRIP SLEEVE: COM. BRONZE, ASTM-B-140
ALL OTHER PARTS: BRASS, ASTM-B16
8. FINISHES:
CENTER CONTACT: HARD GOLD PLATE PER MIL-G-45204
ALL OTHER METAL PARTS: KINGS TARNISH RESISTANT FINISH (TR-5)
9. ELECTRICAL CHARACTERISTICS:
NOMINAL IMPEDANCE: 50 OHMS
VOLTAGE RATING: 500 VRMS
FREQUENCY RANGE: DC TO 11 GHz

REVISIONS

ISSUE	CHANGES
5	CN 35105 D REDRAWN KH 01/10/94

KAM3388

SCALE 4:1

APPROX SURFACE AREA

USED ON

REF: BOEING

JACK, TNC

DRAWN KH DATE 01/10/94

DESIGN JT DATE 01/11/94

APPR. DATE

KINGS
ELECTRONICS CO., INC.
TUCKAHOE, NEW YORK 10707

GSD

KA-39-82