

# “High Frequency Ceramic Solutions”

## 2.45 GHz Band Pass Filter

P/N 2450BP39C100A

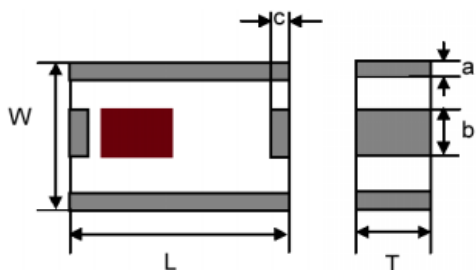
Detail Specification Page 1 of 2

Part Number	Frequency (MHz)	Insertion Loss	Attenuation (min.)	Return Loss	Ripple
2450BP39C100A_	2450 ± 50	2.5 dB max	40 dB @ 880 - 915 MHz 42 dB @ 1.71- 1.99 GHz 30 dB @ 2.1 GHz 30 dB @ 4.8 - 5.0 GHz 35 dB @ 7.2 - 7.5 GHz	9.5 dB min.	0.7 dB min.

Input Power	Group Delay	Impedance	Operating Temperature Range
500 mWatt max	5 nsec max	50 Ω	-40 to +85°C

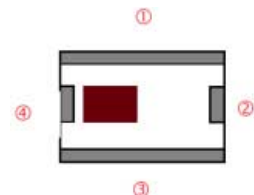
### Mechanical Dimensions

	L	W	T	a	b	c
Inches	0.098 ± .008	0.079 ± .008	0.035 ± .004	0.012 ± .008	0.024 ± .008	0.012 ± .008
mm	2.5 ± 0.2	2.0 ± 0.2	0.9 ± 0.1	0.3 ± 0.2	0.6 ± 0.2	0.30 ± 0.2



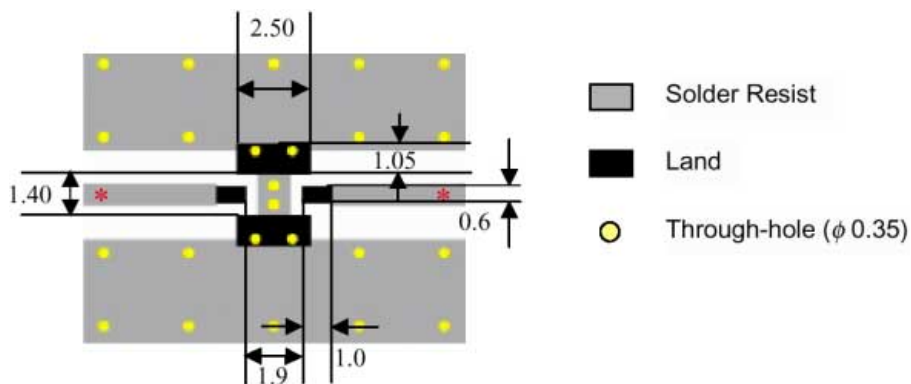
### Terminal Configuration

No.	Function	No.	Function
1	GND	3	GND
2	OUT	4	IN



### Mounting Considerations

Line width should be designed to provide 50Ω impedance matching characteristics.



Johanson Technology, Inc. reserves the right to make design changes without notice.  
All sales are subject to Johanson Technology, Inc. terms and conditions.

# “High Frequency Ceramic Solutions”

## 2.45 GHz Band Pass Filter

P/N 2450BP39C100A

Detail Specification Page 1 of 2

Typical Transmission / Return Loss: P/N 2450BP39C100A

