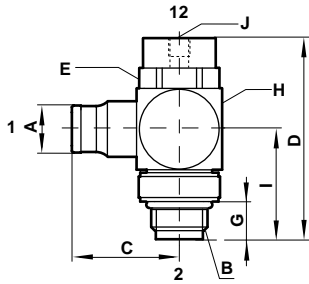




Pilot Operated Check Valve (Blocking Fitting) - 102GA

PIF x BSPP thread



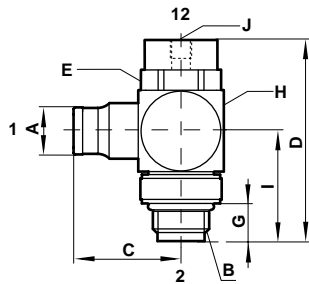
Product number	A O/D tube	B thread BSPP	C	D	E	G	H SQ	I	J
102GA0628	6	1/4"	25,2	47,5	17	10,5	20	25,8	M5
102GA0828	8	1/4"	26,2	47,5	17	10,5	20	25,8	M5
102GA0838	8	3/8"	28,2	54,5	22	10,8	24	29,0	M5
102GA1038	10	3/8"	32,7	54,5	22	10,8	24	29,0	M5
102GA1248	12	1/2"	39,7	65,0	27	12,8	30	36,0	M5

- 1) Inlet Port
- 2) Outlet Port
- 12) Signal Port

Note: For mounting in pairs on a cylinder

Pilot Operated Check Valve (Blocking Fitting) - 124GA

PIF x NPTF thread



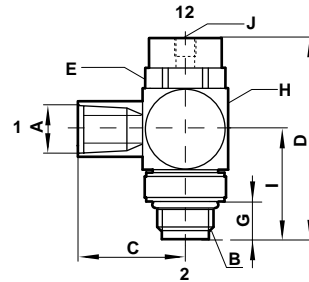
Product number	Body port A	B thread NPTF	C	D	E	G	H SQ	I	J
124GA0418	1/4PIF	1/8"	23,2	41,0	13	12,3	16	19,8	10-32"UNF
124GA0428	1/4PIF	1/4"	25,2	48,0	17	16,3	20	25,8	10-32"UNF
124GA0638	3/8PIF	3/8"	32,7	55,0	22	17,5	24	29,0	10-32"UNF
124GA0748	1/2PIF	1/2"	39,7	65,5	27	22	30	36,0	10-32"UNF

- 1) Inlet Port
- 2) Outlet Port
- 12) Signal Port

Note: For mounting in pairs on a cylinder

Pilot Operated Check Valve (Blocking Fitting) - 124GA

NPTF threaded port x NPTF thread



Product number	Body port A	B thread NPTF	C	D	E	G	H SQ	I	J
124GA1818	1/8NPTF	1/8"	22,0	41,0	13	12,3	16	19,8	10-32"UNF
124GA2828	1/4NPTF	1/4"	29,0	48,0	17	16,3	20	25,8	10-32"UNF
124GA3838	3/8NPTF	3/8"	30,5	55,0	22	17,5	24	29,0	10-32"UNF
124GA4848	1/2NPTF	1/2"	39,0	65,5	27	22	30	36,0	10-32"UNF

- 1) Inlet Port
- 2) Outlet Port
- 12) Signal Port

Note: For mounting in pairs on a cylinder

Warning

These products are intended for use in industrial compressed air systems only. Do not use these products where *pressures* and *temperatures* can exceed those listed under 'Technical Data'.

Before using these products with fluids other than those specified, for non-industrial applications, life-support systems, or other applications not within published specifications, consult Norgren.

Through misuse, age, or malfunction, components used in fluid power systems can fail in various modes. The system designer is warned to consider the failure modes of all component parts used in fluid power systems and to provide adequate safeguards to prevent personal injury or damage to equipment in the event of such failure.

System designers must provide a warning to end users in the system instructional manual if protection against a failure mode cannot be adequately provided.

System designers and end users are cautioned to review specific warnings found in instruction sheets packed and shipped with these products where applicable.

- Very compact units
- Easy tube insertion for rapid assembly of pneumatic circuits
- Positive tube anchorage
- Safer pneumatic systems

Technical Data

Medium:

Compressed air

Operating Pressure:

1 - 10 bar

Operating Temperature:

-20°C to +80°C

Inlet Port:

6, 8, 10, 12mm Push-in Fittings

1/4, 3/8, 1/2 Push-in Fittings

1/8, 1/4, 3/8, 1/2 NPTF Threaded Ports

Outlet Port:

1/4, 3/8, 1/2 BSPP Thread

1/8, 1/4, 3/8, 1/2 NPTF Thread

Signal Port:

M5

10-32" UNF

Tube Sizes

6, 8, 10, 12mm O/D

1/4, 3/8, 1/2 O/D

Tubing Types:

Nylon 11 or 12, polyurethane and other plasticised or unplasticised tubing which conforms to the tolerances specified in BS 5409, Part 1, 1976, light and normal duty, DIN 73378, DIN 74234, NFE 49-100

Materials

Nickel plated brass body

Nickel plated brass collet

Plastic sealing washer

Nitrile and polyurethane elastomeric parts

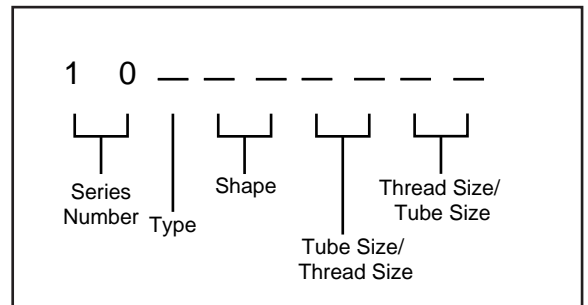
Zinc plated brass banjo bolts



Ordering Information

To order, quote appropriate product number from the tables on the following pages.

Product numbering system is designed to make identification and selection simple:



102GA
124GA

