

Features

- Frequency Range: 0.6~2.5GHz
- Standard Hermetic Package
- Operating Temperature Range: -55°C ~ +85°C

Specifications (50 Ω, V_{CC} = +12V, T_A = -55°C ~ +85°C)

Parameter	Symbol	Unit	Guaranteed	Typical
Frequency Range	f _L ~f _H	GHz	0.6~2.5	0.6~2.5
Gain	G _p	dB	≥12.0	14.0
Gain Flatness	ΔG _p	dB	≤±1.0	±0.5
Noise Figure	F _n	dB	≤5.5Δ	2.9
Input VSWR	VSWR _i	---	≤2.0:1	1.7:1
Output VSWR	VSWR _o	---	≤2.0:1	1.8:1
Saturation Output Power	P ₀	dBm	≥19.0Δ	20.5
DC Current	I _{CC}	mA	---	65

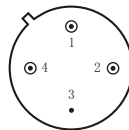
“Δ” T_A = 24 ± 1°C;

Maximum Rating

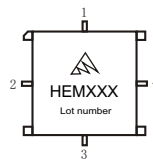
DC Voltage : +13.5VDC

RF Input: +15dBm

Storage Temp: +125°C



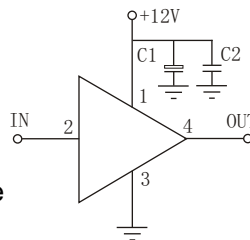
TO-8A



SMO-8C

Application Notes

1. Typical application shown as right, C₁ = 10~33 μF ; C₂ = 3300~6800pF;
2. See assembly section for mounting information
3. Connectorized package(SMA-1) available
4. Pay attention to heat dispersion.
5. ESD observe handling precautions



Typical Curves

