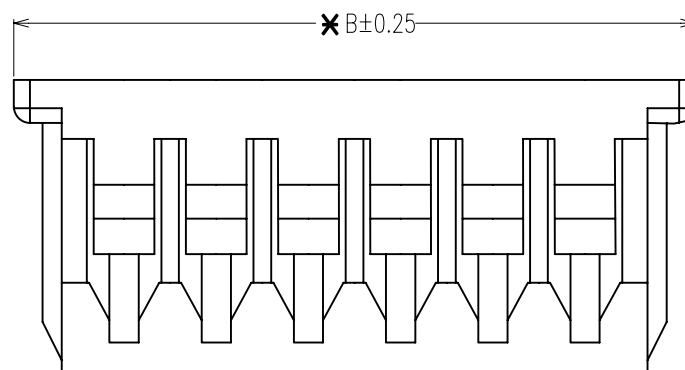
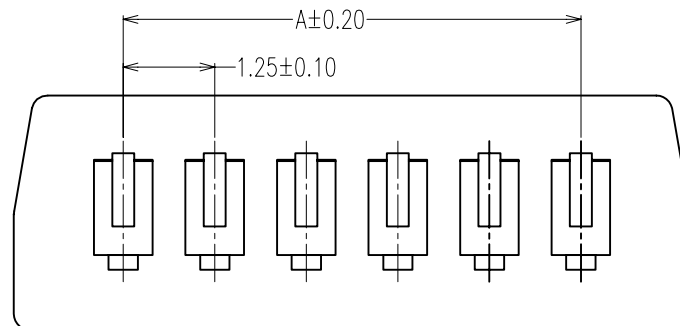


POS	DIMENSIONS	
	A	B
02P	1.25	4.25
03P	2.50	5.50
04P	3.75	6.75
05P	5.00	8.00
06P	6.25	9.25
07P	7.50	10.50
08P	8.75	11.75
09P	10.00	13.00
10P	11.25	14.25
11P	12.50	15.50
12P	13.75	16.75
13P	15.00	18.00
14P	16.25	19.25
15P	17.50	20.50



## SPECIFICATIONS:

MATERIAL:-

NYLON PBT,UL94V-0

COLOR: NATURAL WHITE

ELECTRICAL:-

CURRENT RATING: 1A AC, DC

VOLTAGE RATING: 125V AC, DC

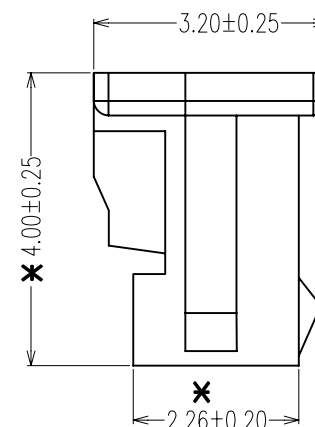
WITHSTANDING VOLTAGE: 500V AC/MINUTE

CONTACT RESISTANCE: 20 mΩ MAX.

INSULATION RESISTANCE: 100 MΩ MIN.

ENVIRONMENTAL:-

TEMPERATURE RANGE:-25°C ~ +85°C



NOTES: ALL DIMENSIONS AND NOTES  
MARKED \* ARE CRITICAL AND  
MUST BE CHECKED IN ACCORDANCE  
WITH QUALITY DOC. Q1-02A

Allan	2	20.02.08	A112
HTUT	1	14.02.07	-
NAME	ISS.	DATE	C/NOTE

APPROVED:

CHECKED:

DRAWN: HTUT HTUT

ORDER CODE

M30-130 XX 00

NO. OF WAYS PER ROW

CUSTOMER REF.:

ASSEMBLY DRG:

# HARWIN

HARWIN USA  
TEL: 603 893 5376  
FAX: 603 893 5396  
mis@harwin.com

HARWIN Europe (UK)  
TEL: 023 9231 4545  
FAX: 023 9231 4590  
mis@harwin.co.uk

HARWIN Asia  
TEL: +65 6 779 4909  
FAX: +65 6 779 3868  
mis@harwin.com.sg

THIS DRAWING AND ANY  
INFORMATION OR DESCRIPTIVE  
MATTER SET OUT HEREON ARE  
CONFIDENTIAL AND COPYRIGHT  
PROPERTY OF THE HARWIN  
GROUP AND MUST NOT BE  
DISCLOSED, LOANED, COPIED  
OR USED FOR MANUFACTURING,  
TENDERING OR FOR ANY  
OTHER PURPOSE WITHOUT  
THEIR WRITTEN PERMISSION.

## TOLERANCES

X. = ±1mm  
X.X = ±0.25mm  
X.XX = ±0.15mm  
X.XXX = ±0.05mm  
ANGLES = ±5°  
UNLESS STATED

MATERIAL:

SEE NOTES

FINISH:

SEE NOTES

S/AREA:

mm<sup>2</sup>

TITLE:

1.25MM PITCH SINGLE ROW  
HOUSING

DRAWING NUMBER:

M30-130 XX 00

SHT  
1  
OF  
1