



Data Display Products®

# .190" MOUNT PANEL LIGHTS

30 Series

- Mounting Hardware Provided
- For Detailed LED Data, See Discrete Section, MODEL 125

Model	Wires	LED	LED				Voltage <sup>[5]</sup>	Lens		Bezel Color	
			Color	λpk (nm)	Iv <sup>[2]</sup> (mcd)	Tint <sup>[3]</sup>		V <sup>[4]</sup>	Diffusion		Color
305 <sup>[1]</sup>	W	-ER	RED	660	48	D	I	2	-C	R	0
31	Optional	-ECR	RED	660	60	C	I	5H	Clear	Red	Black
34		-PCR	RED	660	80	C	I	12H			
		-RQ	RED	654	340	W	I	15H	-N Diffused	A Amber	9 White
		-BR	RED	635	14	D	I	24H			
		-BCR	RED	635	60	C	I	28H			
		-EA	ORG	605	18	D	I	48H		Y Yellow	
		-ECA	ORG	605	24	C	I	60H			
		-PCA	ORG	605	40	C	I	120 <sup>[8]</sup>			
		-AQ	AMB	592	200	W	I			G Green	
		-BA	AMB	583	14	D	I				
		-BCA	AMB	583	30	C	I				
		-EAY	AMB	580	18	D	I			B Blue	
		-ECAY	AMB	580	24	C	I				
		-PCAY	AMB	580	40	C	I				
		-EY	YEL	570	30	D	I			W Water	
		-ECY	YEL	570	48	C	I			Clear	
		-PCY	YEL	570	60	C	I				
		-BG	GRN	565	14	D	I				
		-BCG	GRN	565	44	C	I			S <sup>[9]</sup> Smoke	
		-EG	GRN	555	8	D	I				
		-ECG	GRN	555	15	C	I				
		-PCG	GRN	555	20	C	I				
		-NWG	GRN	520	1,000	W	II				
		-NWB	BLU	465	300	W	II				
		<i>Specialty LEDs</i>								<i>Description</i>	
		-RLP <sup>[6]</sup>	RED	635	2.1	D	I <sup>[4]</sup>				Low Power
		-ALP <sup>[6]</sup>	AMB	583	1.6	D	I <sup>[4]</sup>				Low Power
		-GLP <sup>[6]</sup>	GRN	565	2.1	D	I <sup>[4]</sup>				Low Power
		-RG <sup>[7]</sup>	R/G	630/565	5/5	D	I				Bi-Color, Red Cathode

Voltage/Current	
Design Vf/If	Max Vf/If
<b>Table I</b>	
5V/27mA	5.5V/40mA
12V/27mA	14V/35mA
15V/24mA	16.5V/28mA
24V/17mA	26V/20mA
28V/16.5mA	30V/18mA
48V/15mA	50V/16mA
60V/9mA	65V/10mA
120VAC/3.5mA	130VAC/4mA

Table II	
5V/15mA	6V/25mA
12V/15mA	14V/20mA
15V/15mA	16.5V/18mA
24V/15mA	26V/18mA
28V/15mA	30V/17mA
48V/9.5mA	50V/10mA
60V/7mA	65V/8mA
120VAC/3.5mA	130VAC/4mA

- [1] Model 305 has no lens. Omit Lens Diffusion and Color (e.g. 305-RG5H-0).
- [2] Iv = typical luminous intensity @ If = 20mA (Ta = 25°C). Iv is measured without lenses. For Low Power LEDs, If = 2mA.
- [3] D = Diffused, C = Clear Tinted, W = Water Clear.
- [4] See Voltage/Current table for design specifications. Design current for low power LEDs = 2mA.
- [5] Ta = 25°C. Voltage "2" indicates external resistor required. Voltages 5H through 60H are VDC. For AC operation, insert D after Voltage (e.g. 24HD). D indicates built-in rectifier; not required for 15H or less, or 120VAC or greater. DC operation not available for 120V. Bi-Color not available in AC voltages.
- [6] Omit H when selecting a voltage (e.g. 31-RLP12).
- [7] Select -CW or -NW lens only.
- [8] Omit Lens Diffusion when selecting smoked lens (e.g. 31-RQ28H-SO).
- [9] Select LED with mcd ≥ 200.

**To Order:**  
**Example:**

Select one **BOLD** component from each **SHADED** column in the table except as noted.  
**Part Number 34-BCR24H-CR0:**

Model	LED	Voltage	Lens		Bezel Color
			Diffusion	Color	
34	<b>-BCR</b>	<b>24H</b>	<b>-C</b>	<b>R</b>	<b>0</b>

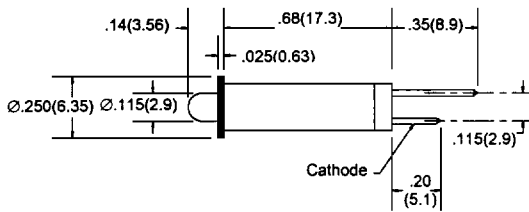
Continued...



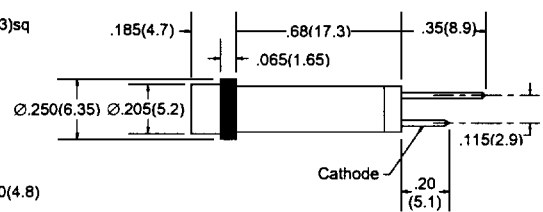
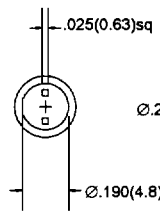
Data Display Products®

# .190" MOUNT PANEL LIGHTS

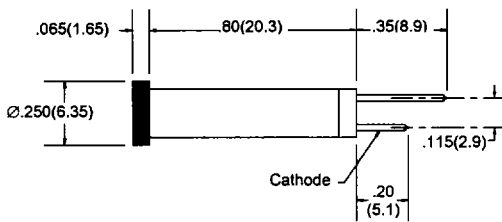
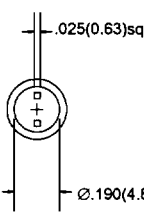
30 Series



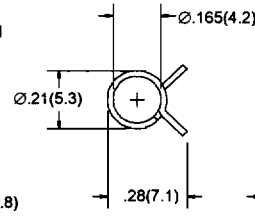
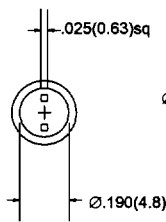
305 (no lens)



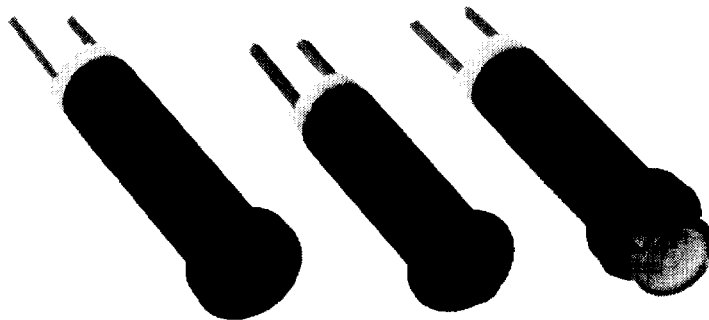
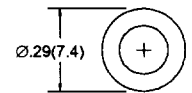
31



34 (flush lens)



TC3 & NW3, Mounting Hardware



**Standard Wire Leads:** 6.0" total length(nominal) / .50" stripped (nominal), red anode/black cathode, 24 AWG TPB UL1061 insulation. Contact factory for other lengths, gauges and colors.

All dimensions are in inches(mm)  
Tolerances: .xx"(x) ±.025"(.63) / .xxx"(xx) ±.010"(.25)  
Specifications are subject to change without notice.