

**PLEASE CHECK WWW.MOLEX.COM FOR LATEST PART INFORMATION**

**Part Number:** [0334821601](#)  
**Status:** **Active**  
**Overview:** [mx150 sealed connector system](#)  
**Description:** 3.50mm (.138") Pitch MX150™ Sealed Male Connector, Dual Row, 16 Circuits, Polarization A, without Connector Position Assurance, Black

**Documents:**

[3D Model](#) [Product Specification PS-33472-000 \(PDF\)](#)  
[Application Specification \(PDF\)](#) [RoHS Certificate of Compliance \(PDF\)](#)  
[Drawing \(PDF\)](#)

**General**

Product Family	Crimp Housings
Series	<a href="#">33482</a>
Comments	No Connector Position Assurance (CPA)
More Detailed Tech Information	<a href="http://ewcap.uscarteams.org">http://ewcap.uscarteams.org</a>
Overview	<a href="#">mx150 sealed connector system</a>
Product Name	MX150™

**Physical**

Circuits (maximum)	16
Circuits Detail	16
Color - Resin	Black, Natural
Gender	Male
Glow-Wire Compliant	No
Keying to Mating Part	Yes
Lock to Mating Part	Yes
Material - Resin	Modified Polystyrene Alloy
Number of Rows	2
Packaging Type	Bag
Panel Mount	No
Pitch - Mating Interface (in)	0.138 In
Pitch - Mating Interface (mm)	3.50 mm
Polarized to Mating Part	Yes
Stackable	No
Temperature Range - Operating	-40°C to +125°C

**Electrical**

Current - Maximum per Contact	22A
-------------------------------	-----

**Material Info**

**Reference - Drawing Numbers**

Application Specification	AS-33472-100
Packaging Specification	PK-30907-811, PK-31300-635
Product Specification	PS-33472-000
Sales Drawing	ES-E1AB-14A485-AA, SD-33482-161



**EU RoHS**

**ELV and RoHS Compliant**  
**REACH SVHC Contains SVHC: No**  
**Halogen-Free Status**

**China RoHS**



**Need more information on product environmental compliance?**

Email [productcompliance@molex.com](mailto:productcompliance@molex.com)  
 For a multiple part number RoHS Certificate of Compliance, [click here](#)

Please visit the [Contact Us](#) section for any non-product compliance questions.

**Search Parts in this Series**

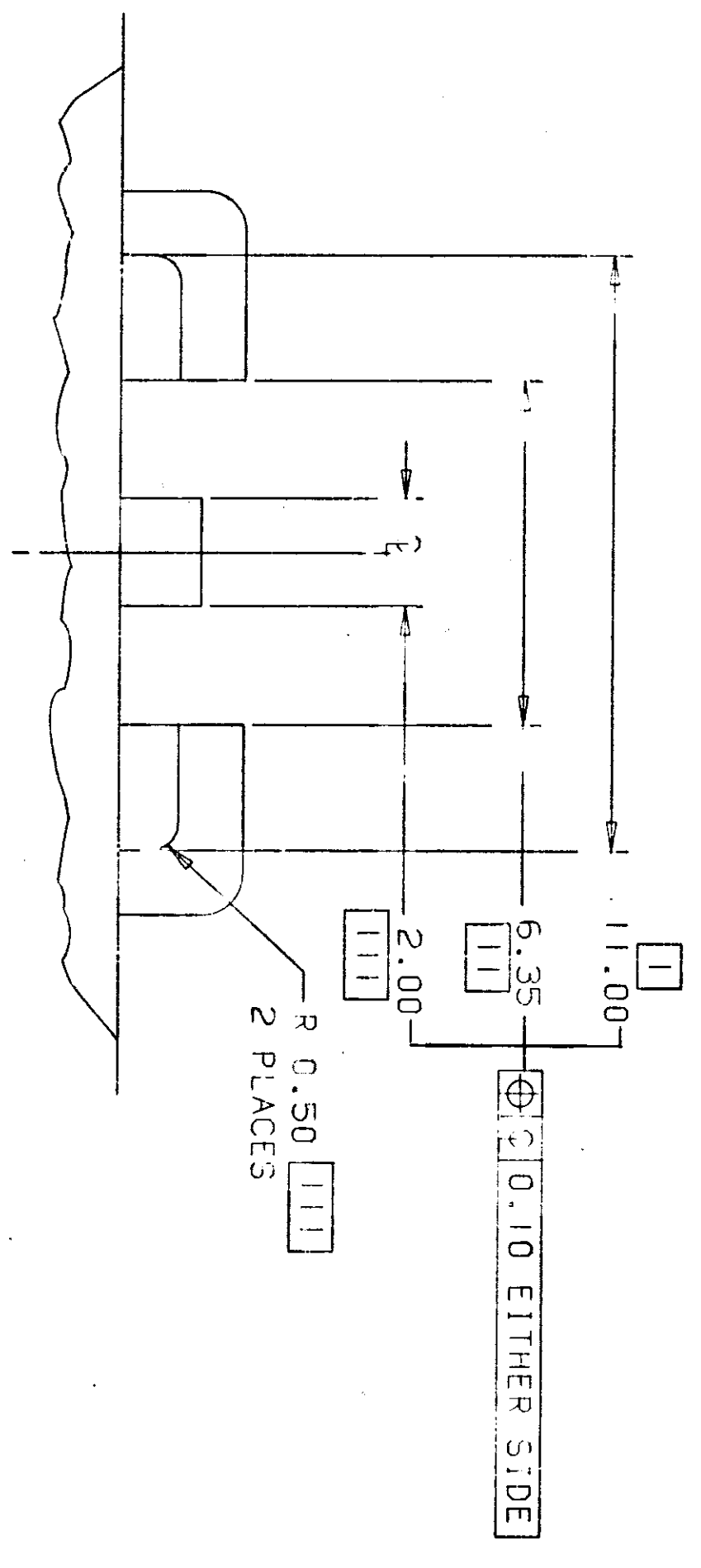
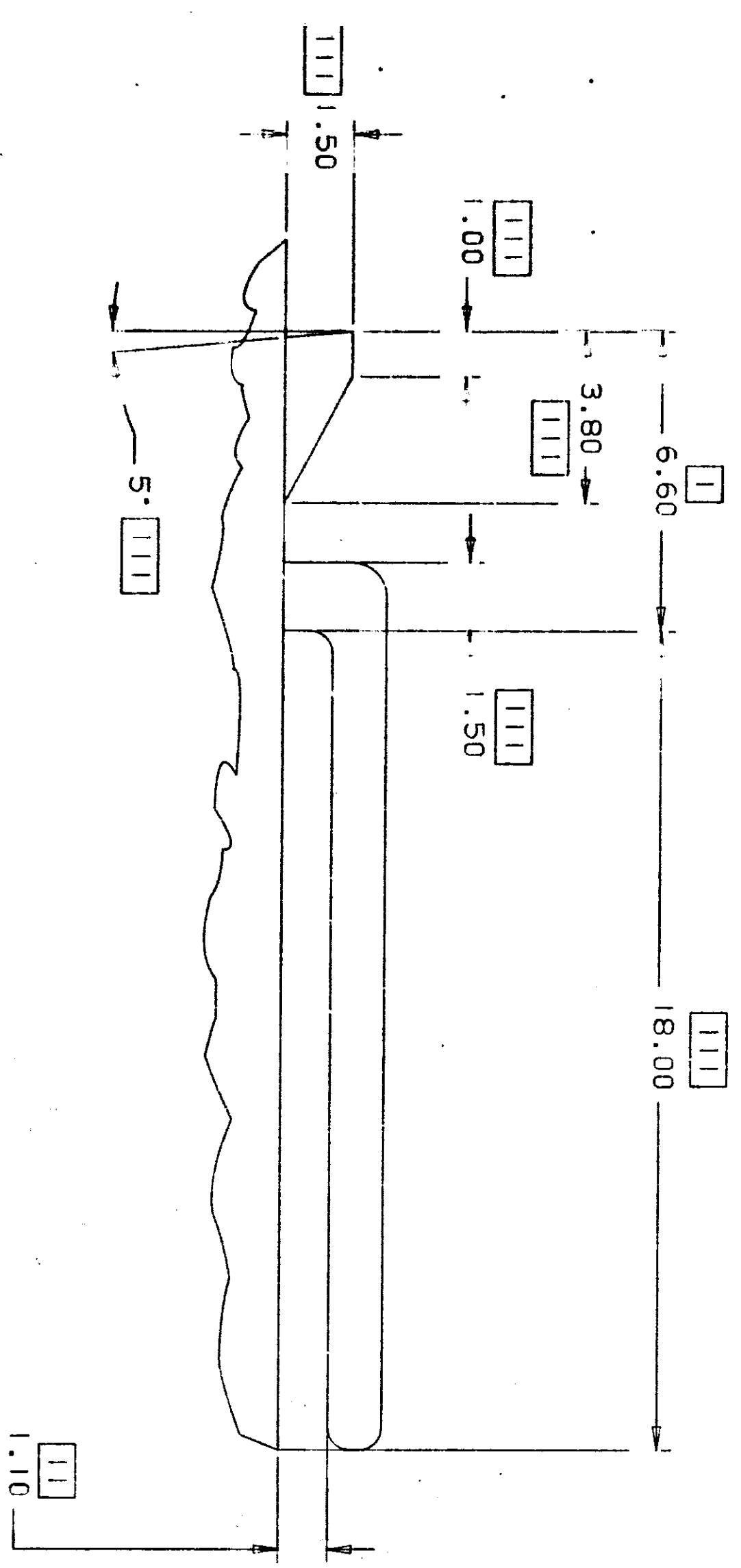
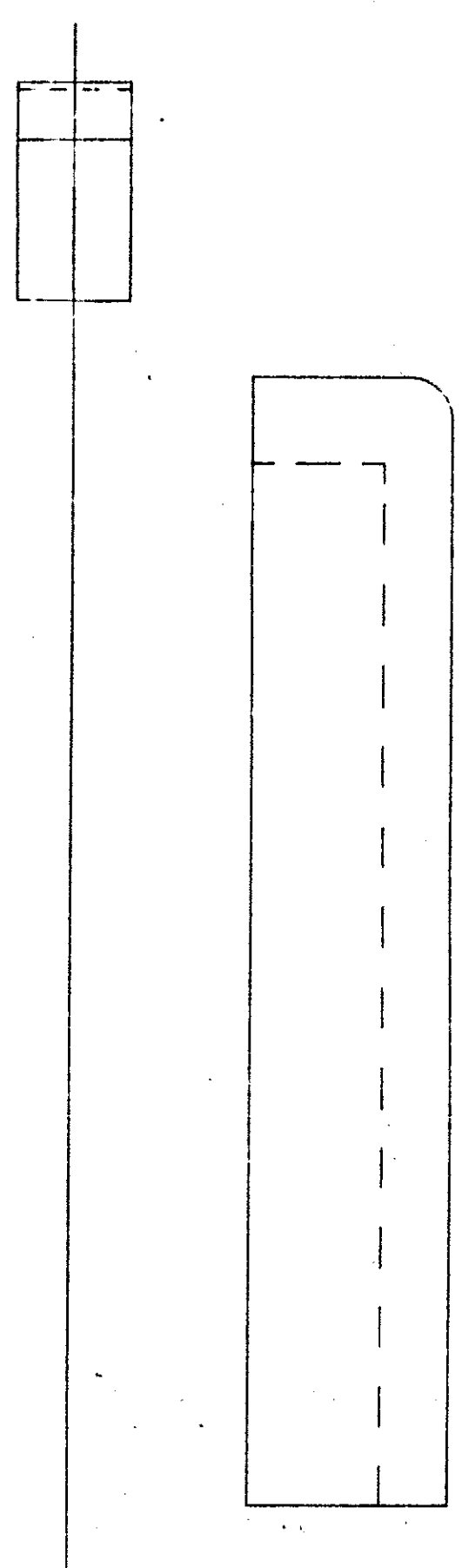
[33482Series](#)

**Mates With**

[33472](#) Female Dual Row Sealed Connector

**Use With**

[33000](#) MX150™ Tin (Sn) Male Terminal,  
[33011](#) Gold (Au) Male Terminal



VIEW OF WIRE END OF CONNECTOR

NOTES: UNLESS OTHERWISE SPECIFIED

- GENERAL TOLERANCES:
  - ±0.10 ALL TWO PLACE DIMENSIONS
  - ±0.3 ALL ONE PLACE DIMENSIONS
  - ±1.0° ALL ANGULAR DIMENSIONS
- 0.5° MAXIMUM DRAFT ANGLE
- 0.3 MAXIMUM RADIUS PERMISSIBLE ON ALL EDGES AND FILLETS SHOWN AS SHARP
- ALL RADI: 0.8
- WALL THICKNESS 1.3-1.0

DATE LET	REVISIONS	DR	CK	APP
11-18-77	RELEASED COMPLETE			
	AKI-6000 #86			

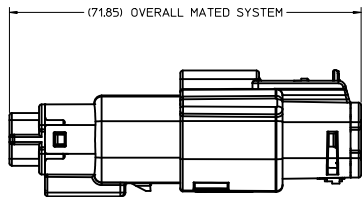
NO. ES-EIAB-14A485-AA

**SPIND** PRODUCT ENGINEERING

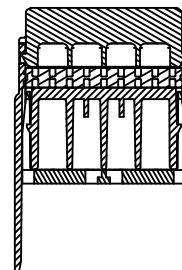
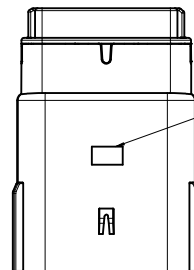
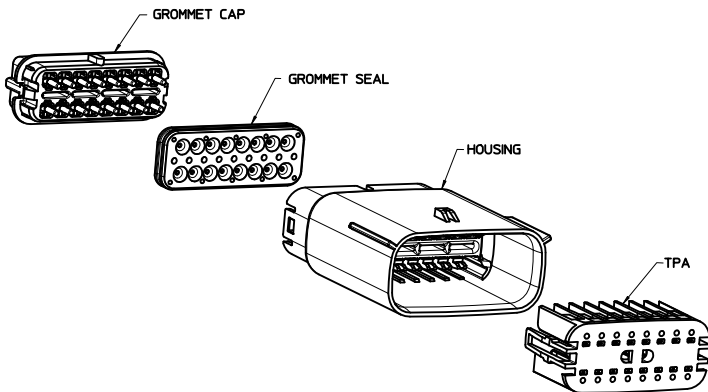
MILLIMETRES ON ORIGINAL FORMAT - 1:1
10 20 30 40 50 60 70 80 90 100 110 120 130 140
DO NOT SCALE ABOVE SCALE FOR REFERENCE ONLY
REF
DRAWN BY: <i>Janice</i>
DATE: <i>11-8-77</i>
CHECKED: <i>CE</i>
SCALE: <i>1/2"</i>
APPROVED CODE: <i>MA</i>

UNLESS OTHERWISE SPECIFIED  
 DIMENSIONS ARE IN MILLIMETRES  
 MACHINED DIM: 1  
 ANGULAR DIM: 1

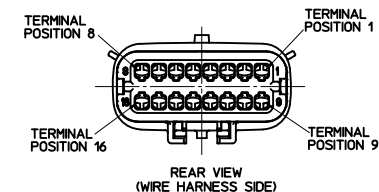
NAME: SPECIFICATION - RETAINER - WIRE  
 CONNECTOR SLEEVE  
 MATERIAL: *55*  
 DATE: *11-8-77*  
 NO. ES-EIAB-14A485-AA



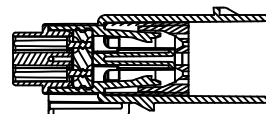
SCALE 1:1



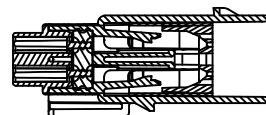
SECTION A-A



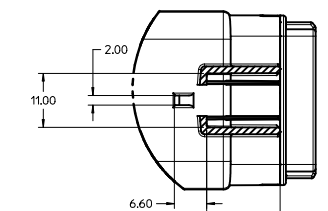
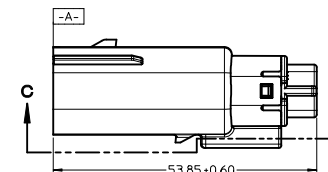
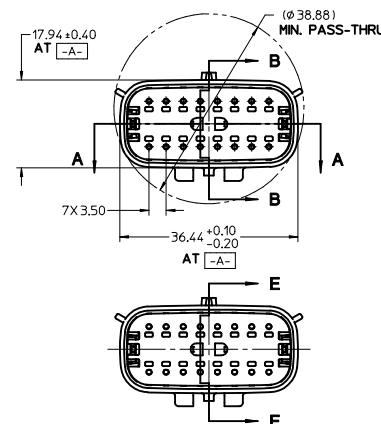
REAR VIEW (WIRE HARNESS SIDE)



SECTION B-B (BLADE INSERT SHOWN IN FULL-LOCK POSITION) SEE NOTE 2



SECTION E-E (BLADE INSERT SHOWN IN PRE-LOCK POSITION) SEE NOTE 2



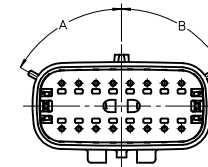
SECTION C-C

NOTES: UNLESS OTHERWISE STATED

- DESIGNED TO MATE WITH RECEPTACLE HOUSING ASSEMBLY SPECIFIED IN MOLEX CHARTED DRAWING SD-33472-161.
- ASSEMBLY SHIPPED WITH BLADE INSERT IN PRE-LOCKED POSITION (SEE SECTION E-E PRE-LOCK). UPON FULL TERMINAL ASSEMBLY EACH BLADE INSERT MUST BE SNAPPED INTO ITS FINAL-LOCK POSITION.
- FOR BLADE TERMINALS TO BE USED WITH THIS ASSEMBLY SEE DRAWING SD-33000-001.
- SYSTEM TO BE USED WITH WIRE WITHIN DIAMETER RANGE OF 1.5mm TO 2.5mm.
- MATERIAL: SPS/NYLON BLEND, 20% GLASS FILLED.
- SHALL CONFORM TO PACKAGING SPECIFICATION PK-31300-635.
- SHALL CONFORM TO PRODUCT SPECIFICATION PS-33472-000.
- ASSEMBLY CONFORMS TO SAE/USCAR-2 REV 4 WITH THE FOLLOWING EXCEPTIONS: TERMINAL INSERTION FORCE FOR WIRE SIZE ABOVE 2.5mm NOT EXCEEDING 2.69N SHALL NOT EXCEED 45 NEWTONS.

ENTER DESCRIPTION IEC NO. UAU2010-1593 DRAWN BY CHKD BY APPR. BY DATE 2010/03/30 2010/03/30 2010/04/06	QUALITY SYMBOLS ∇=0 ∇=0 ∇=0	GENERAL TOLERANCES (UNLESS SPECIFIED) mm INCH		DIMENSION STYLE MM ONLY	SCALE 2:1	DESIGN UNITS METRIC	THIRD ANGLE PROJECTION
		4 PLACES ± 0.10 3 PLACES ± 0.10 2 PLACES ± 0.10 1 PLACE ± 0.3 ANGULAR ± 3°	DRAWN BY DGRIFITHS	DATE 05-29-03	CHECKED BY DATE 05-29-03	TITLE MX150 BLADE CONNECTOR ASSEMBLY 2 ROW SEALED, 16 WAY	
AA	DRAFT WHERE APPLICABLE MUST REMAIN WITHIN DIMENSIONS	MATERIAL NO. SEE TABLE	APPROVED BY DATE VKOSHY 2010/04/06	MOLEX INCORPORATED	DOCUMENT NO. SD-33482-161	SHEET NO. 1 OF 3	THIS DRAWING CONTAINS INFORMATION THAT IS PROPRIETARY TO MOLEX INCORPORATED AND SHOULD NOT BE USED WITHOUT WRITTEN PERMISSION

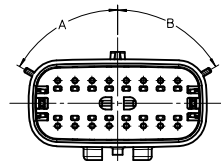
ASSEMBLY PART NUMBER	COLOR	KEYING OPTION	DIMENSIONS (DEGREES)		CAVITY TYPE & STATUS ( X = PLUGGED)															
			A	B	1	2	3	4	5	6	7	8	9	10	11	12	13	14	15	16
33482-1601	BLACK	A	60	60																
33482-1602	LT.GRAY	B	25	60																
33482-1603	BROWN	C	60	25																
33482-1604	GREEN	D	25	25																
33482-1605	CUSTOM	TBD																		
33482-1606	BLACK	A	60	60								X								
33482-1607	LT.GRAY	B	25	60								X								
33482-1608	BROWN	C	60	25								X								
33482-1609	GREEN	D	25	25								X								
33482-1610	CUSTOM	TBD										X								
33482-1611	BLACK	A	60	60								X	X							
33482-1612	LT.GRAY	B	25	60								X	X							
33482-1613	BROWN	C	60	25								X	X							
33482-1614	GREEN	D	25	25								X	X							
33482-1615	CUSTOM	TBD										X	X							
33482-1616	BLACK	A	60	60	X							X	X							
33482-1617	LT.GRAY	B	25	60	X							X	X							
33482-1618	BROWN	C	60	25	X							X	X							
33482-1619	GREEN	D	25	25	X							X	X							
33482-1620	CUSTOM	TBD			X							X	X							
33482-1621	BLACK	A	60	60	X	X	X	X	X	X	X	X	X	X	X	X	X	X	X	
33482-1622	LT.GRAY	B	25	60	X	X	X	X	X	X	X	X	X	X	X	X	X	X	X	
33482-1623	BROWN	C	60	25	X	X	X	X	X	X	X	X	X	X	X	X	X	X	X	
33482-1624	GREEN	D	25	25	X	X	X	X	X	X	X	X	X	X	X	X	X	X	X	
33482-1625	CUSTOM	TBD			X	X	X	X	X	X	X	X	X	X	X	X	X	X	X	
33482-1626	BLACK	A	60	60														X		
33482-1627	BLACK	A	60	60	X							X	X						X	
33482-1628	LT.GRAY	B	25	60	X							X	X						X	
33482-1629	BROWN	C	60	25	X							X	X						X	
33482-1630	GREEN	D	25	25	X							X	X						X	
33482-1631	CUSTOM	TBD			X							X	X						X	
33482-1632	BLACK	A	60	60				X				X	X			X	X	X		
33482-1633	BLACK	A	60	60			X	X	X			X	X	X	X	X	X	X	X	
33482-1634	BLACK	A	60	60							X	X			X	X				
33482-1635	LT.GRAY	B	25	60							X	X			X	X	X	X		
33482-1636	BLACK	A	60	60								X	X			X	X	X		
33482-1637	BLACK	A	60	60														X	X	
33482-1638	BLACK	A	60	60								X	X	X	X			X	X	
33482-1639	BLACK	A	60	60														X		
33482-1640	BLACK	A	60	60					X										X	
33482-1641	BLACK	A	60	60					X											
33482-1642	LT.GRAY	B	25	60			X		X	X	X			X		X				
33482-1643	BLACK	A	60	60														X	X	
33482-1644	LT.GRAY	B	25	60			X													
33482-1645	LT.GRAY	B	25	60			X		X	X	X									
33482-1646	BLACK	A	60	60			X		X	X	X				X					
33482-1647	BLACK	A	60	60															X	
33482-1648	BLACK	A	60	60			X							X						
33482-1649	LT.GRAY	B	25	60															X	
33482-1650	LT.GRAY	B	25	60				X						X		X				



KEYING OPTION  
SEE TABLE  
SCALE 2:1

<b>ENTER DESCRIPTION</b> ELEC NO: UAU2010-1593 DRAWN BY: CHKO/SYERZYL APPR: VKOSHY DATE: 2010/03/20 DATE: 2010/04/06	<b>QUALITY SYMBOLS</b> ∇=0 ∇=0 ∇=0	<b>GENERAL TOLERANCES (UNLESS SPECIFIED)</b> mm INCH		<b>DIMENSION STYLE</b> MM ONLY		SCALE 2:1	DESIGN UNITS METRIC	THIRD ANGLE PROJECTION	
		4 PLACES ± .001	± .001	DRAWN BY	DATE	TITLE MX150 BLADE CONNECTOR ASSEMBLY 2 ROW SEALED, 16 WAY			
		3 PLACES ± .002	± .002	CHECKED BY	DATE	MOLEX INCORPORATED			
		2 PLACES ± 0.10	± .005	APPROVED BY	DATE	MATERIAL NO. SD-33482-161 DOCUMENT NO. 2 OF 3			
ANGULAR ± 3°		DRAFT WHERE APPLICABLE MUST REMAIN WITHIN DIMENSIONS		SEE TABLE		THIS DRAWING CONTAINS INFORMATION THAT IS PROPRIETARY TO MOLEX INCORPORATED AND SHOULD NOT BE USED WITHOUT WRITTEN PERMISSION			

ASSEMBLY PART NUMBER	COLOR	KEYING OPTION	DIMENSIONS (DEGREES)		CAVITY TYPE & STATUS ( X = PLUGGED)															
			A	B	1	2	3	4	5	6	7	8	9	10	11	12	13	14	15	16
33482-1651	LT.GRAY	B	25	60															X	
33482-1652	LT.GRAY	B	25	60						X	X	X							X	
33482-1653	BLACK	A	60	60								X							X	
33482-1654	BLACK	A	60	60				X				X			X					
33482-1655	LT.GRAY	B	25	60				X				X			X			X		
33482-1656	LT.GRAY	B	25	60								X						X		
33482-1657	BLACK	A	60	60	X							X								
33482-1658	LT.GRAY	B	25	60		X		X		X	X	X			X			X		
33482-1659	LT.GRAY	B	25	60		X				X	X	X						X		
33482-1660	LT.GRAY	B	25	60		X					X							X		
33482-1661	BLACK	A	60	60		X		X			X				X					
33482-1662	LT.GRAY	B	25	60		X		X			X				X			X		
33482-1663	BLACK	A	60	60		X					X									
33482-1664	BLACK	A	60	60			X				X		X	X					X	X
33482-1665	BLACK	A	60	60			X	X	X	X	X	X	X	X				X	X	X
33482-1666	BLACK	A	60	60		X				X	X	X					X	X	X	X
33482-1667	BLACK	A	60	60		X			X	X			X			X	X	X	X	X
33482-1668	BLACK	A	60	60		X			X	X			X	X		X	X	X	X	X
33482-1669	BLACK	A	60	60		X			X				X			X	X			
33482-1670	BLACK	A	60	60		X		X	X	X	X	X	X	X	X	X	X	X	X	X
33482-1671	BLACK	A	60	60		X		X	X	X			X		X	X	X	X	X	X
33482-1672	BLACK	A	60	60			X				X									
33482-1673	BLACK	A	60	60		X				X	X	X								
33482-1674	BLACK	A	60	60		X				X	X									
33482-1675	BLACK	A	60	60		X				X	X			X						
33482-1676	BLACK	A	60	60			X	X	X	X								X		
33482-1677	BLACK	A	60	60			X	X	X	X			X			X				
33482-1678	BLACK	A	60	60			X	X	X	X				X	X	X				
33482-1679	BLACK	A	60	60			X	X	X	X			X	X	X	X				
33482-1680	BLACK	A	60	60			X	X	X	X			X	X	X	X	X			
33482-1681	BLACK	A	60	60						X								X		
33482-1682	BLACK	A	60	60				X	X	X								X	X	X
33482-1683	BLACK	A	60	60				X	X	X	X							X	X	X
33482-1684	BLACK	A	60	60	X	X	X	X	X	X						X	X	X	X	X
33482-1685	BLACK	A	60	60							X					X	X	X	X	X
33482-1686	BLACK	A	60	60							X					X	X	X	X	X
33482-1687	BLACK	A	60	60						X	X			X	X	X	X	X	X	X
33482-1688	BLACK	A	60	60						X	X			X	X	X	X	X	X	X
33482-1689	BLACK	A	60	60						X	X			X		X				
33482-1690	BLACK	A	60	60						X	X				X					
33482-1691	BLACK	A	60	60					X						X					
33482-1692	BLACK	A	60	60		X						X	X					X	X	X
33482-1693	BLACK	A	60	60		X						X						X		
33482-1694	BLACK	A	60	60		X		X	X	X	X	X	X		X		X	X	X	X
33482-1695	BLACK	A	60	60		X			X	X	X	X		X		X		X	X	X
33482-1700	BLACK	A	60	60	X	X	X	X	X	X	X			X	X	X	X	X	X	X
33482-1701	BLACK	A	60	60	X	X	X	X	X	X				X	X	X	X	X	X	X
33482-1702	BLACK	A	60	60						X	X	X	X	X	X	X	X	X	X	X
33482-1703	BLACK	A	60	60						X	X	X	X	X	X	X	X	X	X	X
33482-1704	BLACK	A	60	60	X	X	X	X	X	X								X	X	X
33482-1705	BLACK	A	60	60							X	X	X	X	X	X	X	X	X	X
33482-1706	BLACK	A	60	60							X	X	X	X	X	X	X	X	X	X
33482-1707	BLACK	A	60	60						X	X	X	X							
33482-1708	BLACK	A	60	60														X	X	X
33482-1709	BLACK	A	60	60														X	X	X
33482-1710	BLACK	A	60	60	X	X	X	X	X	X	X	X	X	X	X	X	X	X	X	X



<b>ENTER DESCRIPTION</b> IEC NO: UAU2010-1593 DRAWN BY: 2010/03/30 CHKD BY: CHKO/SVERZYL APPR: VKOSHY 2010/04/06 REV: DESCRIPTION	<b>QUALITY SYMBOLS</b> ∇=0 ∇=0 ∇=0		<b>GENERAL TOLERANCES (UNLESS SPECIFIED)</b> mm INCH 4 PLACES ± .10 ± .004 3 PLACES ± .15 ± .006 2 PLACES ± 0.30 ± .012 1 PLACE ± 0.75 ± .030 ANGULAR ± 3°		<b>DIMENSION STYLE</b> MM ONLY		SCALE 2:1 DESIGN UNITS METRIC THIRD ANGLE PROJECTION		DRAWN BY DATE DGR1FF1THS 05-29-03 CHECKED BY DATE DGR1FF1THS 05-29-03 APPROVED BY DATE VKOSHY 2010/04/06		MATERIAL NO. SD-33482-161 DOCUMENT NO. MOLEX INCORPORATED		TITLE MX150 BLADE CONNECTOR ASSEMBLY 2 ROW SEALED, 16 WAY		SHEET NO. 3 OF 3	
	DRAFT WHERE APPLICABLE MUST REMAIN WITHIN DIMENSIONS			SEE TABLE		THIS DRAWING CONTAINS INFORMATION THAT IS PROPRIETARY TO MOLEX INCORPORATED AND SHOULD NOT BE USED WITHOUT WRITTEN PERMISSION										
	SIZE D															
	AA															