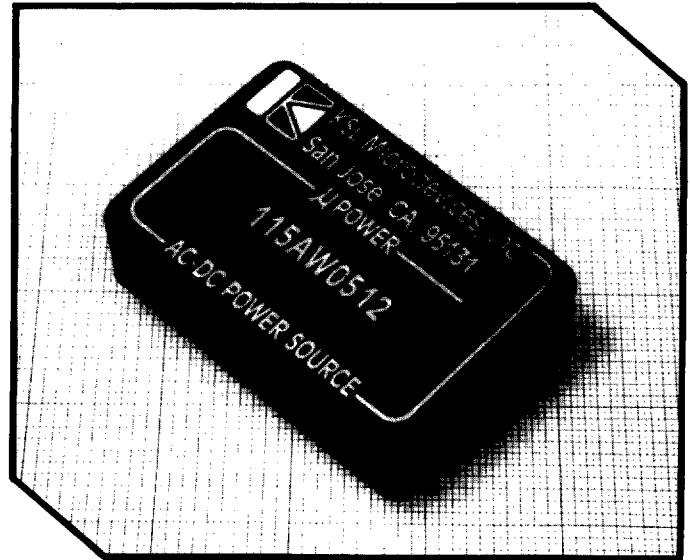


**Features**

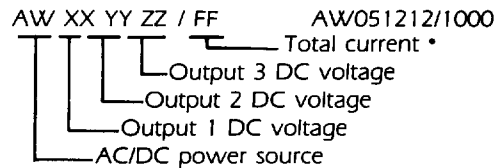
- Economy AC-DC power source
- Low output ripple & noise
- Short circuit protection
- Single, dual or triple outputs
- Excellent regulation
- High MTBF
- 100% burned-in and tested
- Metal case shielding
- Vacuum encapsulated potting

**General Specifications**

- Input Voltage Range: 105 to 125 VAC
- Input frequency: 60Hz
- Line Regulation: .05% for ±10% line change
- Load Regulation: ±.1% (10% to 100% load)
- Output Ripple & Noise: 50mV p-p
- Input/Output Isolation: 100MΩ/1000VDC min.
- Short Circuit Protection: current limiting
- Operating Temperature: -25°C to +70°C
- Storage Temperature: -55°C to +70°C
- Temperature Coefficient: 100ppm/°C

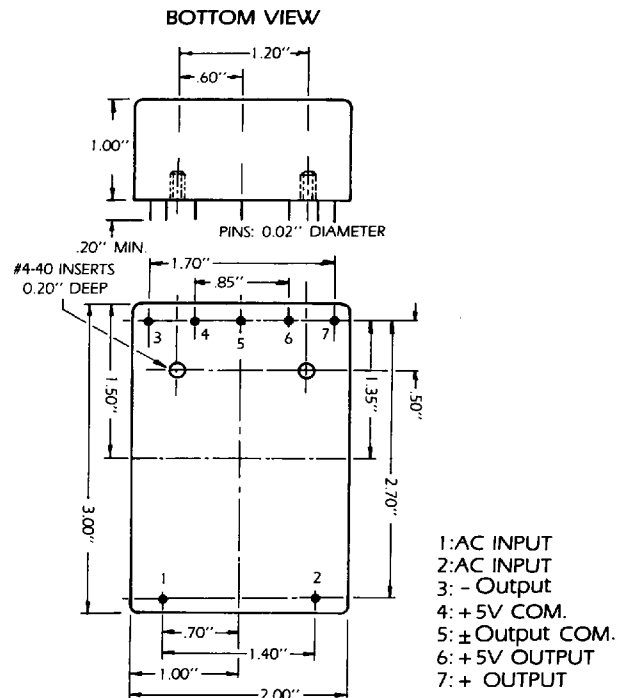


**Part Number — Custom Designs**



\* Current must be specified.

**Package Dimensions**



**Selection Chart (Maximum Rating)**

Model	Output Volt/Current	Model	Output Volt/Current
AW05/1800	+/-5V/1800mA	AW0505/1800	± 5V/ ± 900mA
AW06/1500	+/-6V/1500mA	AW0606/1500	± 6V/ ± 750mA
AW08/1200	+/-8V/1200mA	AW0808/1200	± 8V/ ± 600mA
AW10/1000	+/-10V/1000mA	AW1010/1000	± 10V/ ± 500mA
AW12/900	+/-12V/900mA	AW1212/900	± 12V/ ± 450mA
AW15/800	+/-15V/800mA	AW1515/800	± 15V/ ± 400mA
AW18/600	+/-18V/600mA	AW1818/600	± 18V/ ± 300mA
AW24/450	+/-24V/450mA	AW2424/450	± 24V/ ± 225mA
AW051212/1000	+/-5V/500mA	± 12V/ ± 250mA	
AW051515/1000	+/-5V/500mA	± 15V/ ± 250mA	

\*Specifications subject to change without notice

5048836 0000150 483

