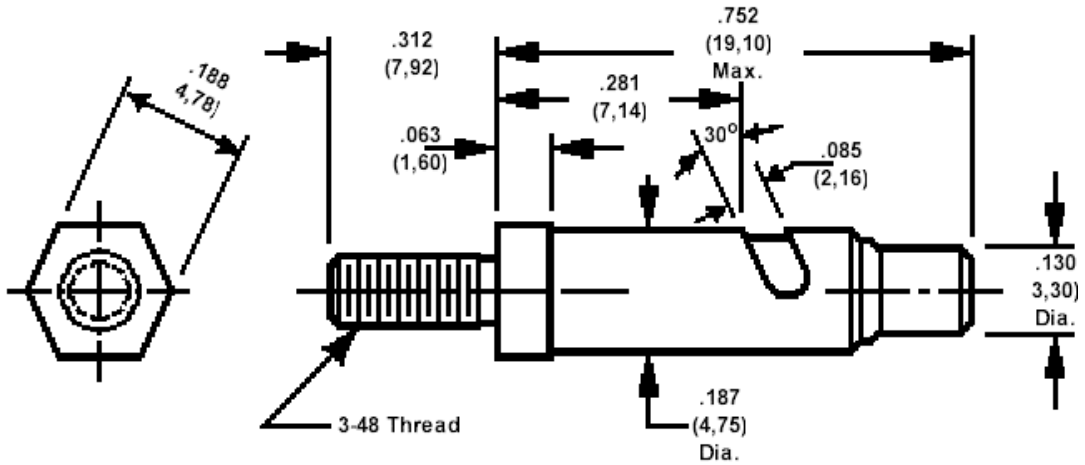


## 410-2339 Component Clip, .085 (2,16) Slot, Thread mount



Recommended Lead Wire Sizes - #19 AWG (.036) (0,91) Min. Thru #13 AWG (.072) (1,83) Max.

How to order code  
**410-2339-01-02-00**  
 Basic Part No.

Component	Material	Finish
Housing	Brass	Nickel
Plunger	Brass	Nickel
Spring	Cres. Steel	Passivated