

Fast Logic Digital Delay Unit

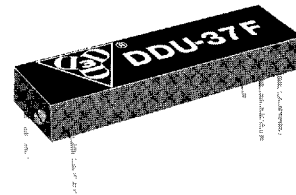
SERIES: DDU-37F

Continuously Variable
T²L Interfaced



Features:

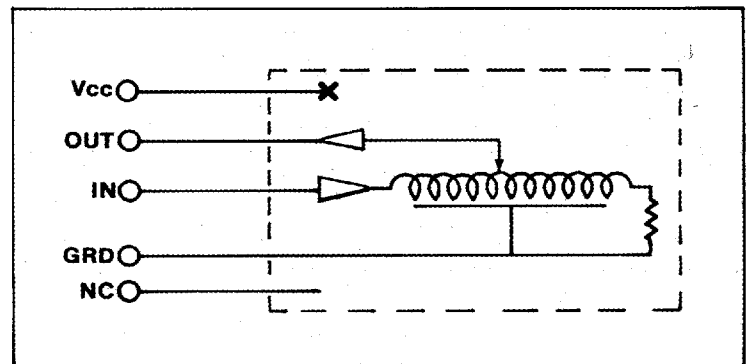
- Input & output fully TTL Interfaced & buffered.
- Low profile.
- Commercial & military type.
- Continuously adjustable.
- Multi-turn adjusting screw (40 turns approx.)



Specifications:

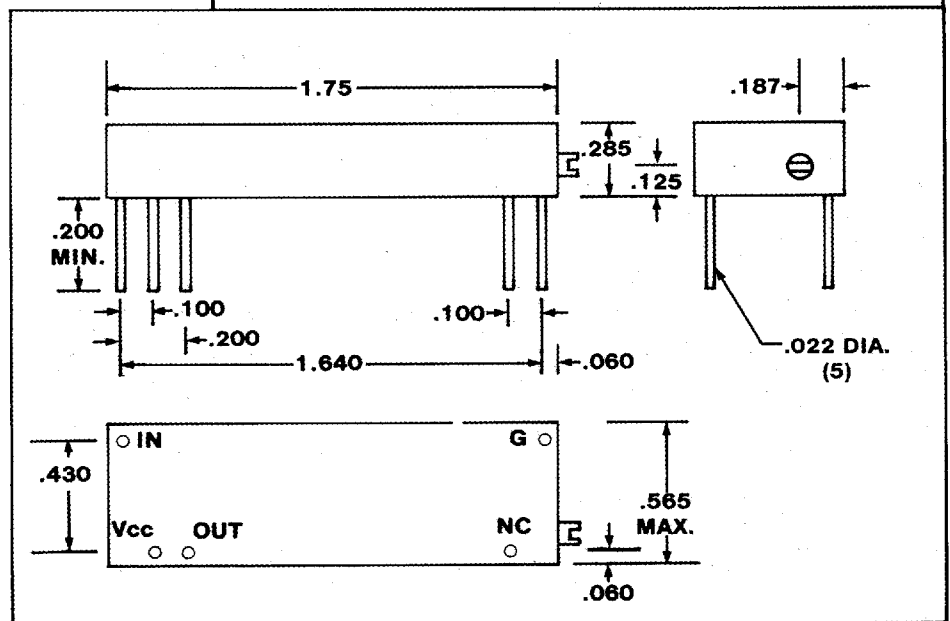
- Inherent delay (T_{DO}): 6 ns typ.
- Delay resolution: .12 ns.
- Output rise-time: 2 ns typ.
- Temperature coefficient: 100 PPM/°C.
- Temperature range: 0°C to 70°C standard. (-55°C to +125°C on request)*
- Supply voltage: 5.0 Vdc \pm 5%.
- Power Dissipation: 230 mw max.
- DC Parameters: See TTL-Fast Schottky Logic Table on Page 6.

* Add "M" after Part No. Ex.: DDU-37F-50M.



| Part No. | Min. Delay Variation (ns) |
|-------------|---------------------------|
| DDU-37F-25 | 15 |
| DDU-37F-30 | 20 |
| DDU-37F-40 | 30 |
| DDU-37F-50 | 40 |
| DDU-37F-60 | 50 |
| DDU-37F-70 | 60 |
| DDU-37F-80 | 70 |
| DDU-37F-100 | 90 |
| DDU-37F-120 | 100 |
| DDU-37F-150 | 130 |
| DDU-37F-200 | 180 |

Other delay times available on request.



3 Mt. Prospect Avenue, Clifton, New Jersey 07013 ■ (201) 773-2299 ■ FAX (201) 773-9672

■ 2644382 0001018 532 ■ 19