

Fast Recovery

Axial Lead Epoxy Rectifiers (Cont'd.) — D.C. Current (I_O) to 3 Amperes

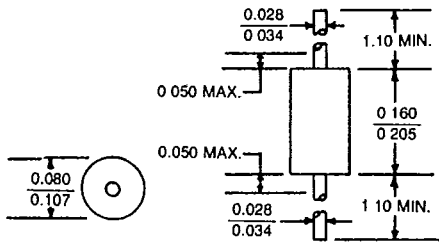
PART NO.	JEDEC PART NO.	PRV VOLTS	V _F VOLTS	I _O AMPS	I _R μA	I _{FSM} AMPS	T _{RR} nsec	CASE STYLE
NS1000		50	1.2	1.0	10	100	150	1B
NS1001		100	1.2	1.0	10	100	150	1B
NS1002		200	1.2	1.0	10	100	150	1B
NS1003		300	1.2	1.0	10	100	150	1B
NS1004		400	1.2	1.0	10	100	150	1B
NS1005		500	1.2	1.0	10	100	150	1B
NS1006		600	1.2	1.0	10	100	150	1B
NS1007		700	1.2	1.0	10	100	150	1B
NS1008		800	1.2	1.0	10	100	150	1B
NS2000		50	1.2	2.0	25	100	150	1B
NS2001		100	1.2	2.0	25	100	150	1B
NS2002		200	1.2	2.0	25	100	150	1B
NS2003		300	1.2	2.0	25	100	150	1B
NS2004		400	1.2	2.0	25	100	150	1B
NS2005		500	1.2	2.0	25	100	150	1B
NS2006		600	1.2	2.0	25	100	150	1B
NS2007		700	1.2	2.0	25	100	150	1B
NS2008		800	1.2	2.0	25	100	150	1B
NS3000		50	1.2	3.0	25	300	150	1C
NS3001		100	1.2	3.0	25	300	150	1C
NS3002		200	1.2	3.0	25	300	150	1C
NS3003		300	1.2	3.0	25	300	150	1C
NS3004		400	1.2	3.0	25	300	150	1C
NS3005		500	1.2	3.0	25	300	150	1C
NS3006		600	1.2	3.0	25	300	150	1C
NS3007		700	1.2	3.0	25	300	150	1C
NS3008		800	1.2	3.0	25	300	150	1C
NSC3000		50	1.2	3.0	25	300	150	1D
NSC3001		100	1.2	3.0	25	300	150	1D
NSC3002		200	1.2	3.0	25	300	150	1D
NSC3003		300	1.2	3.0	25	300	150	1D
NSC3004		400	1.2	3.0	25	300	150	1D
NSC3005		500	1.2	3.0	25	300	150	1D
NSC3006		600	1.2	3.0	25	300	150	1D
NSC3007		700	1.2	3.0	25	300	150	1D
NSC3008		800	1.2	3.0	25	300	150	1D
NSC5001		100	1.2	5.0	25	300	250	1D
NSC5002		200	1.2	5.0	25	300	250	1D
NSC5003		300	1.2	5.0	25	300	250	1D
NSC5004		400	1.2	5.0	25	300	250	1D
NSC5005		500	1.2	5.0	25	300	250	1D
NSC5006		600	1.2	5.0	25	300	250	1D
NSC5008		800	1.2	5.0	25	300	250	1D

Stabistors

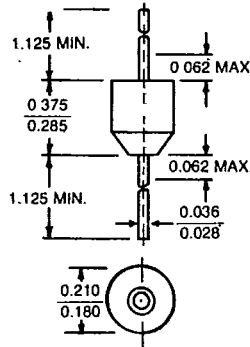
SOLITRON PART NO.	JEDEC PART NO.	V _E (Volts) @								CASE STYLE
		I _F 0.5 mA	I _F 1.0 mA	I _F 3.0 mA	I _F 5.0 mA	I _F 10.0 mA	I _F 15.0 mA	I _F 20.0 mA	I _F 25.0 mA	
HVR-1		.48	.52	.57	.59	.62	.64	.68	.70	1B
HVR-2		.96	1.02	1.12	1.17	1.24	1.28	1.31	1.33	1B
HVR-3		1.50	1.59	1.75	1.84	1.95	2.03	2.08	2.12	1B
HVR-4		1.97	2.04	2.25	2.34	2.50	2.58	2.63	2.67	1B
HVR-5		2.40	2.60	2.85	2.95	3.17	3.30	3.46	3.50	1B
HVR-6		3.00	3.18	3.50	3.65	3.87	4.01	4.11	4.19	1B

Case Outlines and Dimensions

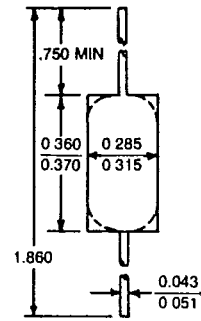
www.DataSheet4U.com



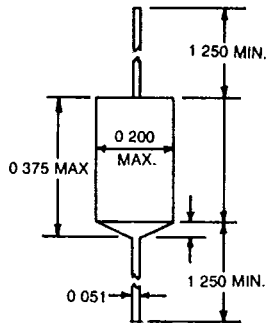
**Case Style 1A
(DO-41)**



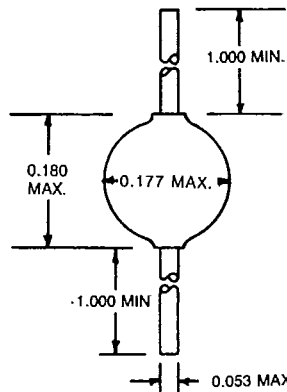
**Case Style 1B
(DO-27)**



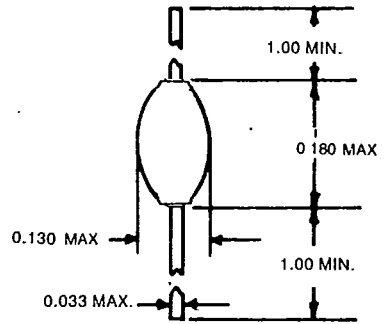
Case Style 1C



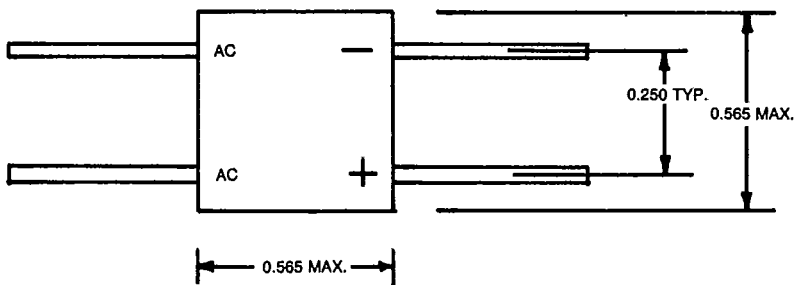
Case Style 1D



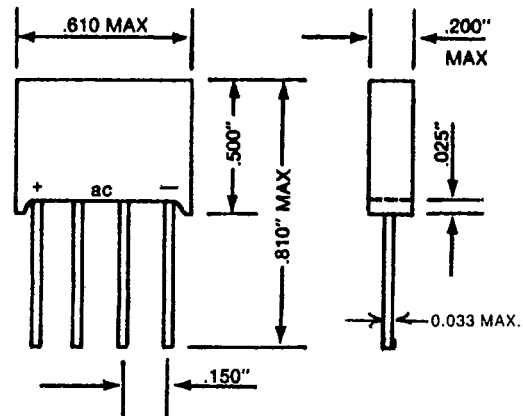
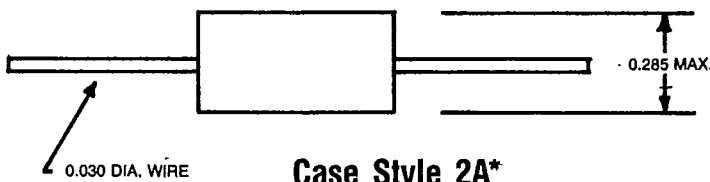
Case Style 1E



Case Style 1F



Case Style 2A*



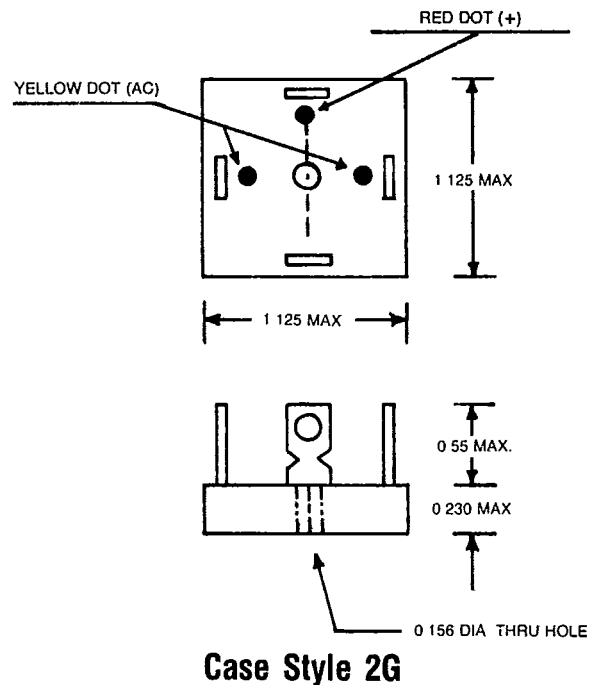
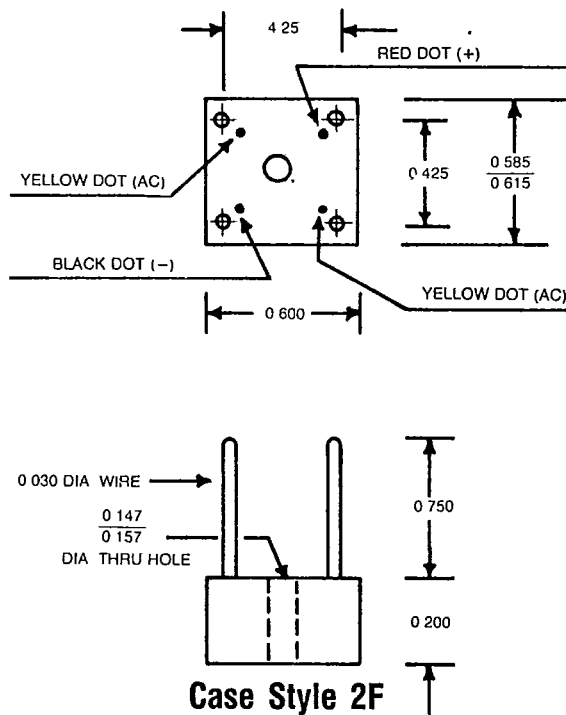
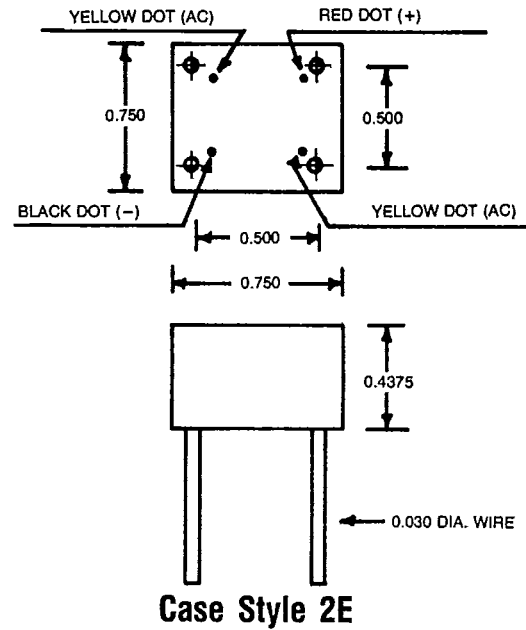
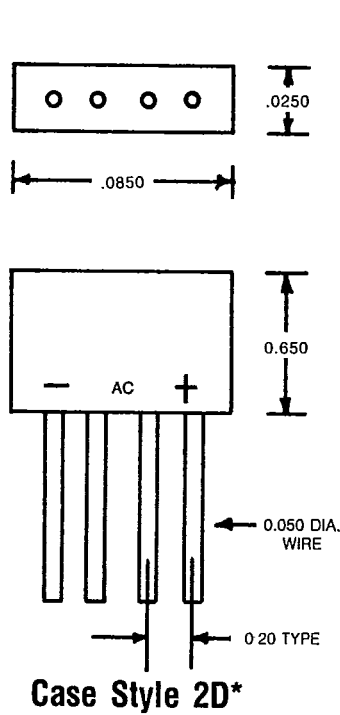
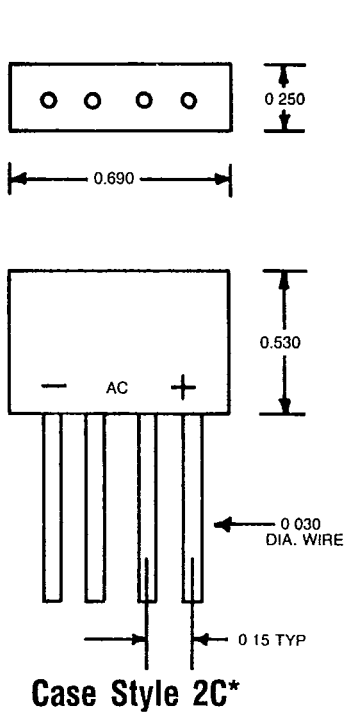
Case Style 2B*

*Also available in lower cost conformal coated package.

www.DataSheet4U.com

Case Outlines and Dimensions

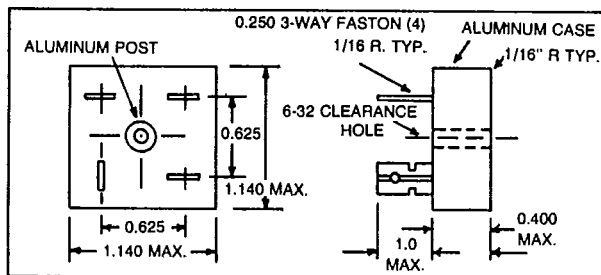
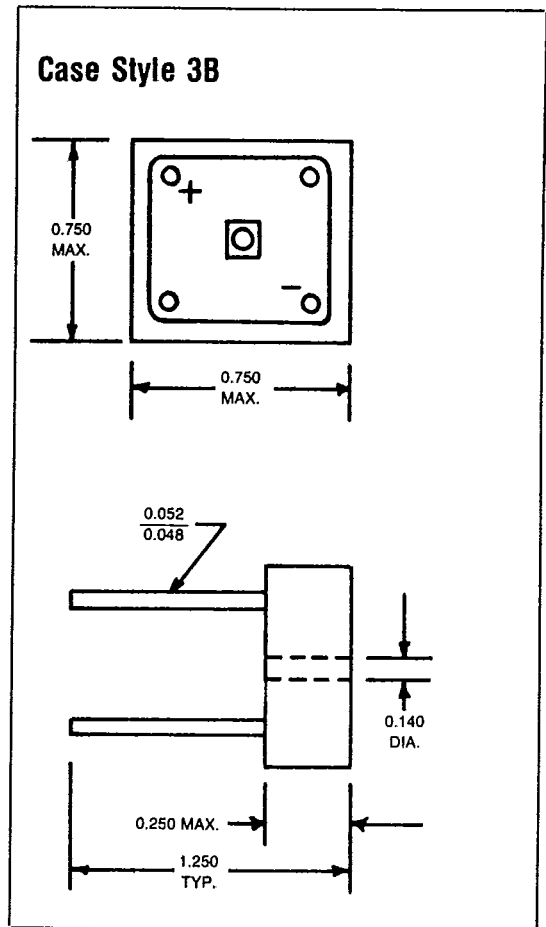
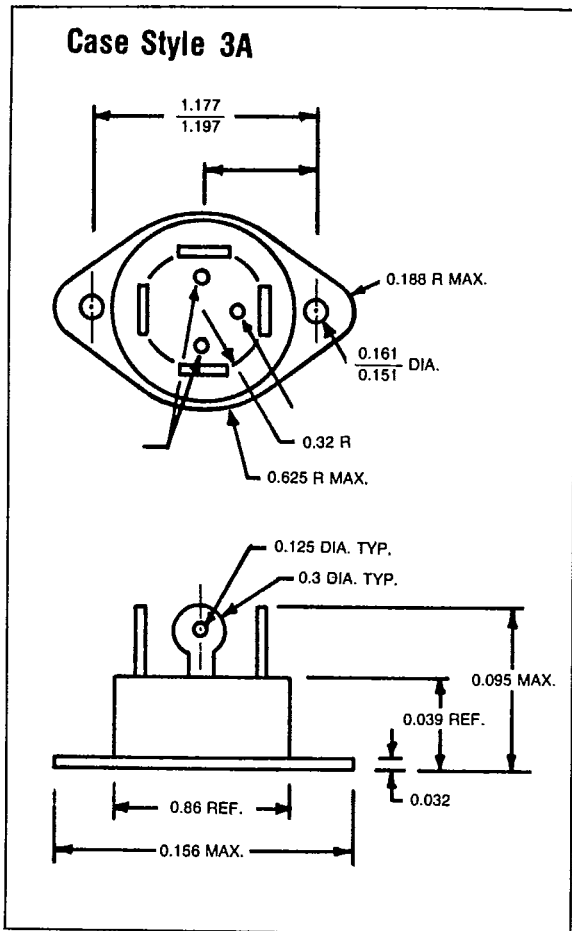
www.DataSheet4U.com



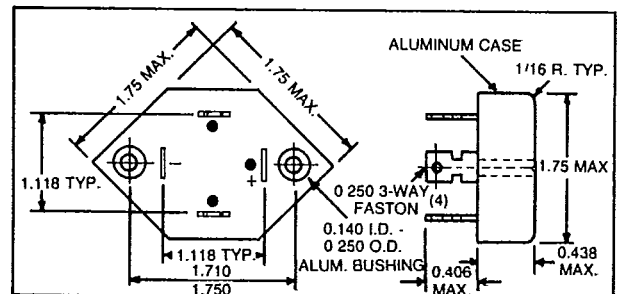
*Also available in lower cost conformal coated package.

Case Outlines and Dimensions

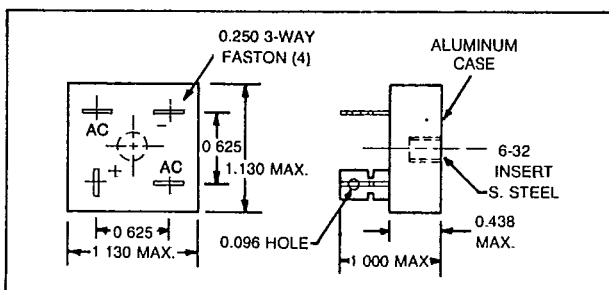
www.DataSheet4U.com



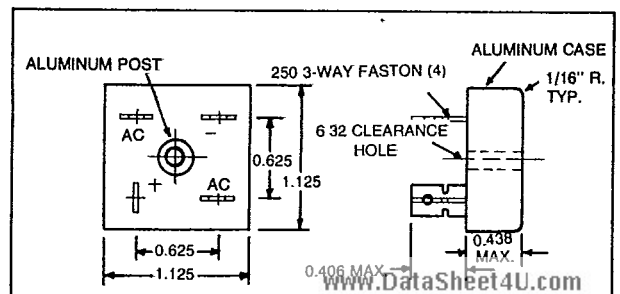
Case Style 3C



Case Style 3D



Case Style 3E



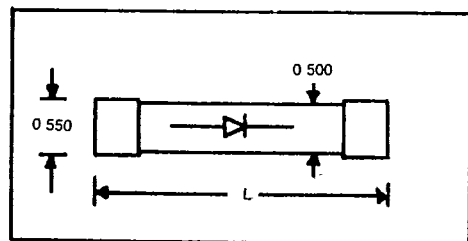
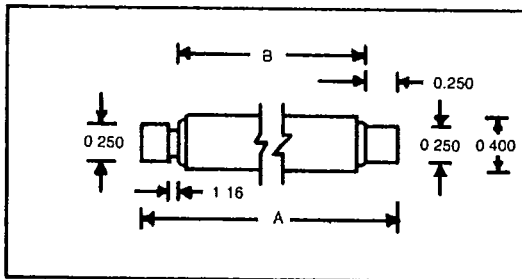
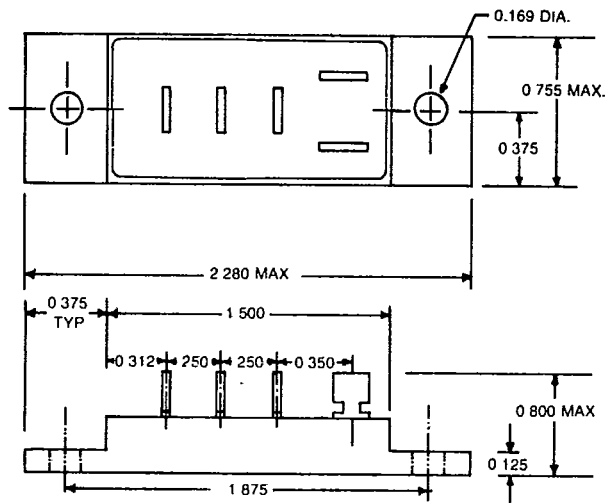
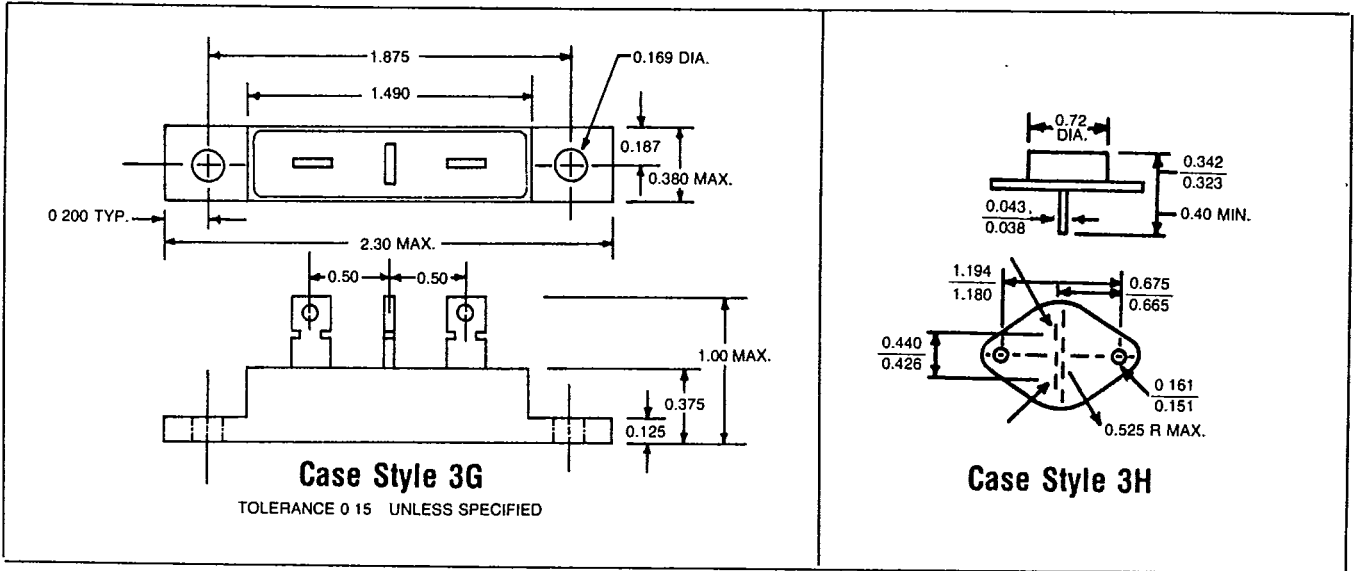
Case Style 3F

www.DataSheet4U.com

Case Outlines and Dimensions

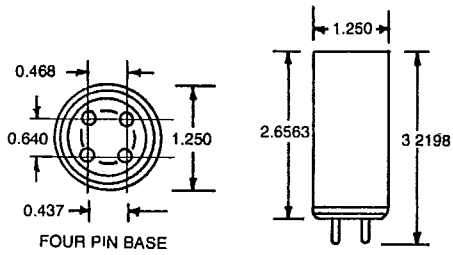
www.DataSheet4U.com

T-23-05



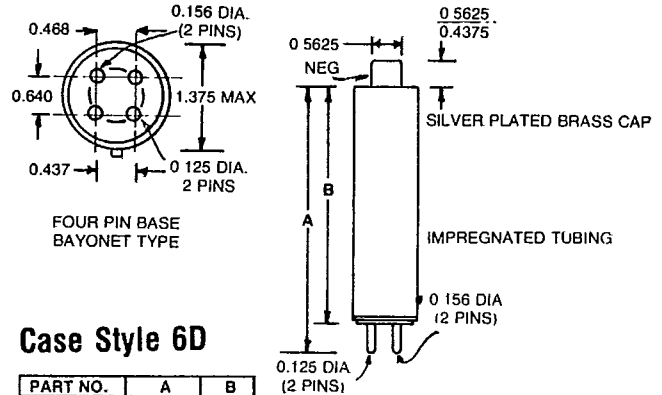
Case Outlines and Dimensions

www.DataSheet4U.com



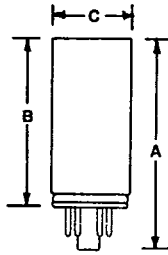
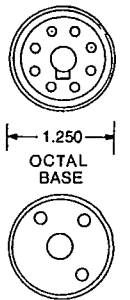
Case Style 6A

PART NO.	A	B	C
1N1150 1N2634	3-7/32"	2-21/32"	1-1/4"



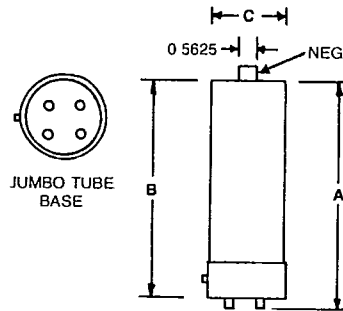
Case Style 6D

PART NO.	A	B
T7KV T10KV 1N2637	4-1 16	3-1 2
	5-1 8	4-1 2



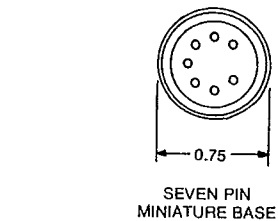
Case Style 6B

PART NO.	A	B	C	NO. OF PINS
1N1237 1N1238 1N2631 1N2632 1N2633	3-7/32	2-21/32	1-1/4	8
1N1239	4-5/16	3-3/4	1-3/8	3
1N1262	4-5/16	3-3/4	1-3/16	8
1N2389	3.25 1.125	2.6875 0.5625	1-3/16	8



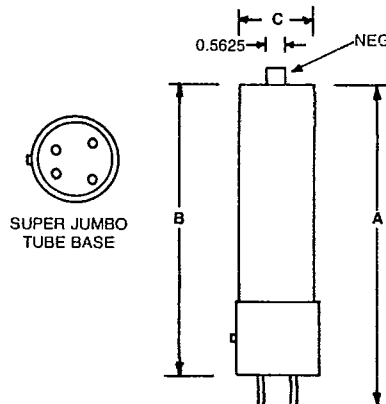
Case Style 6E

PART NO.	A	B	C	(+) PIN CONN.
2ASLD-10TRA 2ASLD-15TR	7-3/4 9-3/4	7-3/8 9-3/8	2-5/16 3-7/8	4 4



Case Style 6C

PART NO.	A	B
1N2490 1N2630 1N2635	1-3/4"	1-1/2"

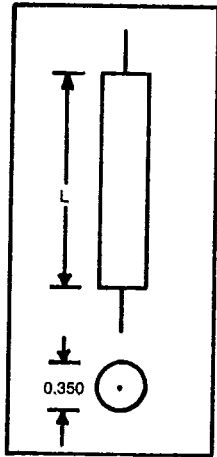


Case Style 6F

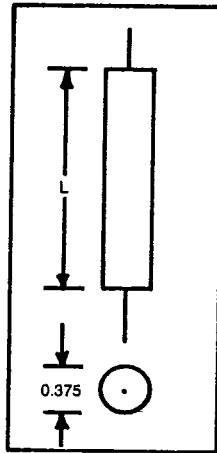
PART NO.	A	B	C	(+) PIN CONN.
2ASLD-10TRB 2ASLD-40TR	8-1/4 9-1/8	7-1/2 8-3/8	2-5/16 2-5/16	3 3

www.DataSheet4U.com

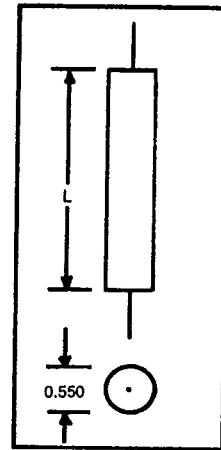
Case Outlines and Dimensions



Case Style 5A*

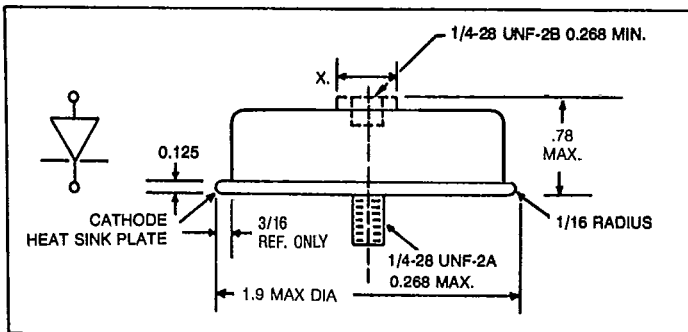


Case Style 5B*

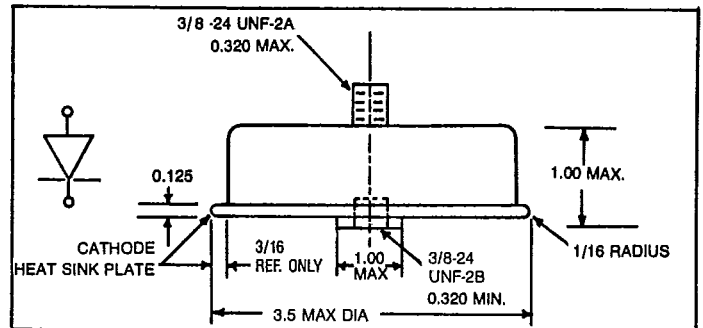


Case Style 5C*

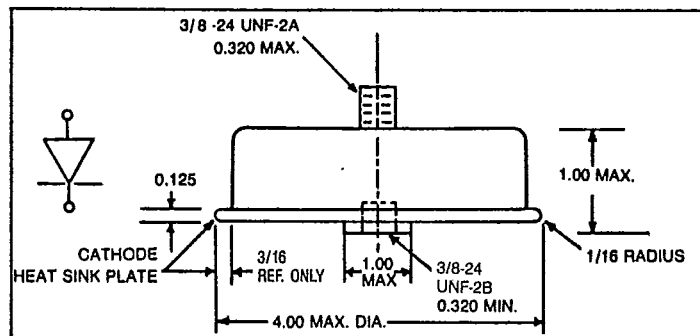
*Lead Length 0.032" x 1.25" Long.



Case Style 7A



Case Style 7B



Case Style 7C