

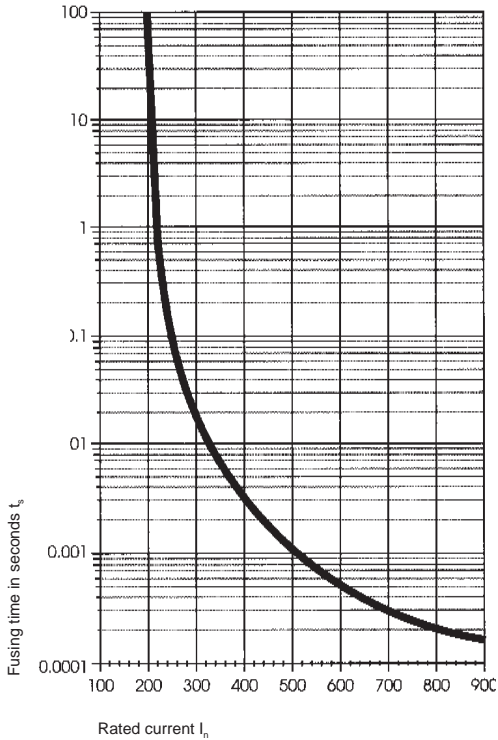
# MGA 125V 125V Quick-acting Surface Mount Fuse



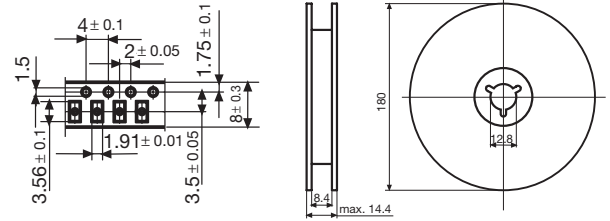
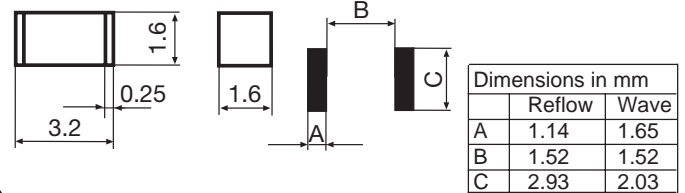
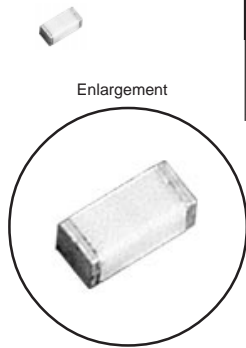
Built according to EIASOCM-3216 (equivalent to 1206), UL 248-14

**Approvals:**

c-UL-us recognition 100mA-3A/125V File #E41599  
 4A/ 63V  
 5A/ 32V



**NEW**



- "Flip chip" design mounts on any side
- Lowest resistance
- Quick-acting
- Hermetically sealed for operating temperatures in excess of 150°C
- Low energy let-through
- Superior cycling

**Time Current Characteristics**

$n \cdot I_n$	$I_n$	$2.5 \cdot I_n$
rated current $I_n$	$\geq 4$ h	$\leq 5$ s
200mA – 5A		

**Technical Data**

<b>Rated current</b>	see chart
<b>Time current characteristic</b>	quick-acting
<b>Breaking capacity</b>	50A AC / DC
<b>Ambient temperature max.</b>	Tu -40°C / to +125°C
<b>Climatic category</b>	50/ 150/ 21 acc. to IEC 60068
<b>Solderability</b>	reflow and wave: 245°C / 5 sec. acc. to EIA-722, 4.8
<b>Material: Housing</b>	ceramic
<b>Terminals</b>	copper alloy, tin plated
<b>Packaging</b>	8mm tape and reel per EIA-RS481 (equivalent to IEC 286-3)

Order Numbers – Standard	Rated current / voltage mA / A / V ~	Breaking capacity A ~ ac / dc cos phi 1	Voltage drop at $I_n$ typical mV	Power dissipation at $1.5 \cdot I_n$ typical mV	Pre-arcing $I^2t$ at $4 \cdot I_n$ typical A <sup>2</sup> s	Packaging Order No. Suffix
3410.0021.XX	200 mA / 125V	50A / 125V	202	40	0.0013	100 pieces taped & bagged: .XX = .01
3410.0022.XX	250 mA / 125V	50A / 125V	176	44	0.0034	
3410.0025.XX	375 mA / 125V	50A / 125V	140	52	0.0037	
3410.0027.XX	500 mA / 125V	50A / 125V	126	68	0.0067	750 pieces taped & reeled: .XX = .02
3410.0029.XX	750 mA / 125V	50A / 125V	118	88	0.015	
3410.0031.XX	1 A / 125V	50A / 125V	114	114	0.043	3,000 pieces taped & reeled: .XX = .03
3410.0033.XX	1.5 A / 125V	50A / 125V	123	185	0.12	
3410.0035.XX	2 A / 125V	50A / 125V	117	234	0.20	
3410.0036.XX	2.5 A / 125V	50A / 125V	115	288	0.54	10,000 pieces taped & reeled: .XX = .04
3410.0037.XX	3 A / 125V	50A / 125V	112	336	0.34	
3410.0240.XX	4 A / 63V	50A / 63V	110	440	0.76	
3410.0141.XX	5 A / 32V	50A / 32V	90	450	1.04	