

Monolithic crystal filter

MQF10.7-1200/04



Application

- 8 pol filter
- i.f.- filter
- use in mobile and stationary transceivers

Limiting values

		Unit	Value
Center frequency	f_0	MHz	10.7
Insertion loss		dB	≤ 4.0
Pass band at 3.0 dB		kHz	± 6.00
Ripple in pass band	$f_0 \pm 4.00$ kHz	dB	≤ 2.0
Stop band attenuation	$f_0 \pm 14$ kHz	dB	≥ 70
	$f_0 \pm 20...300$ kHz	dB	> 90

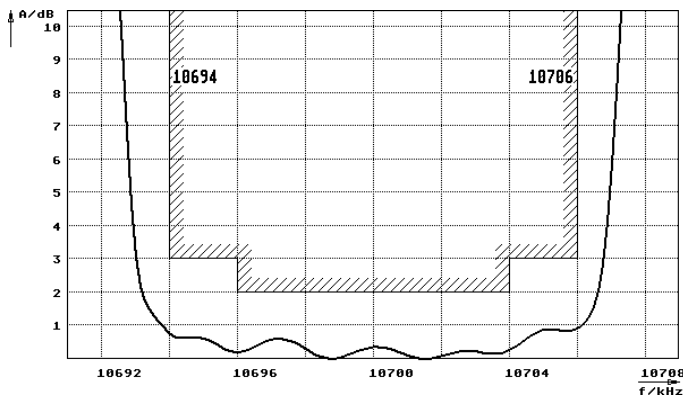
Terminating impedance Z

R1 C1	Ohm/pF	2800 1.5
R2 C2	Ohm/pF	2800 1.5

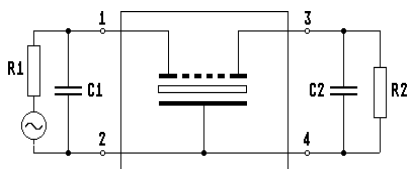
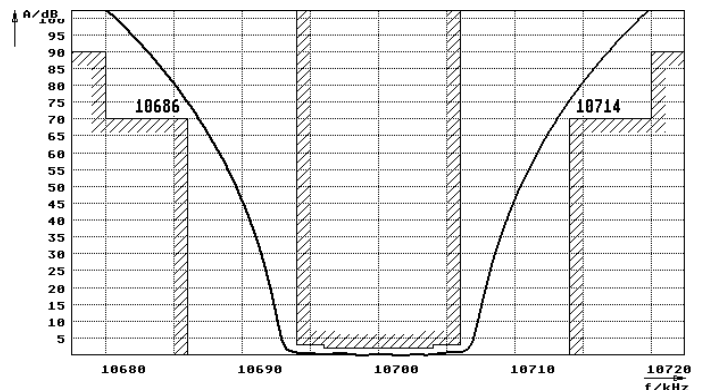
Operating temp. range	$^{\circ}\text{C}$	-20... +70
-----------------------	--------------------	------------

Characteristics MQF10.7-1200/04

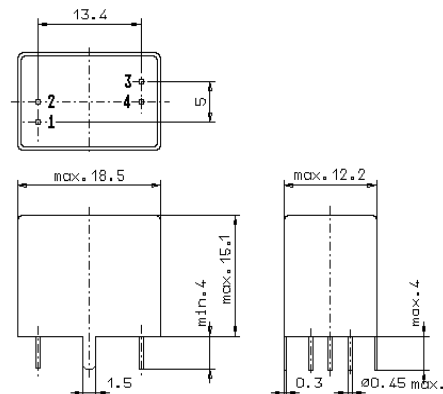
Pass band



Stop band



Pin connections: 1 Input
2 Input-E
3 Output
4 Output-E



GV5.1