

PLEASE CHECK WWW.MOLEX.COM FOR LATEST PART INFORMATION

Part Number: [0191600197](#)
Status: **Active**
Description: M-Cap Wire Connector, Red, for 6-22 AWG Wire

Agency Certification

UL E32244

General

Product Family Splices
 Series [19160](#)
 Crimp Quality Equipment Yes
 Mil-Spec N/A
 Product Name Wing Lock

Physical

Barrel Type Closed
 Flammability 94V-2
 Insulation Nylon (PA)
 Packaging Type Bag
 Temperature Range - Operating 105°C
 Wire Insulation Diameter 13.2mm (.52") max
 Wire Size AWG 10, 12, 14, 16, 18, 20, 22, 24, 26, 6, 8
 Wire Size mm² 16.80 - 0.40

Electrical

Voltage - Maximum 600V

Material Info

Old Part Number MCAP-R

Reference - Drawing Numbers

Product Specification PS-19160-001
 Sales Drawing SD-19160-004

EU RoHS
ELV and RoHS
Compliant
REACH SVHC
 Not Reviewed
Halogen-Free
Status
Not Reviewed

China RoHS



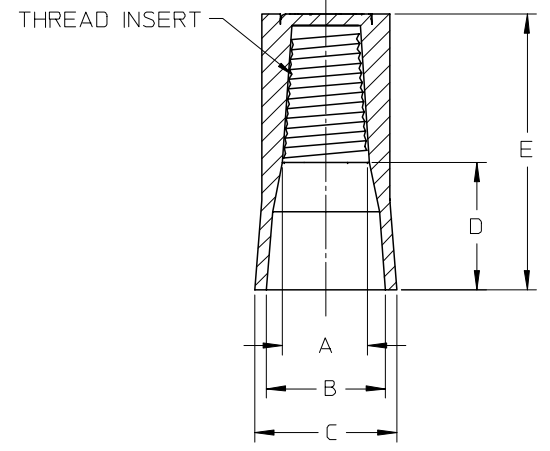
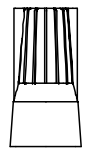
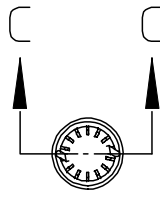
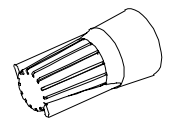
Need more information on product environmental compliance?

Email productcompliance@molex.com
 For a multiple part number RoHS Certificate of Compliance, [click here](#)

Please visit the [Contact Us](#) section for any non-product compliance questions.

Search Parts in this Series
[19160Series](#)

MATERIAL NUMBER	ENGINEERING NUMBER	COLOR	WIRE RANGE	WIRE RANGE MIN.	WIRE RANGE MAX.	VOLTAGE MAX.	DIM A	DIM B	DIM C	DIM D	DIM E
191600196	MCAP-Y	YELLOW	22-10	4#22	3#12	600*	.29/7.4	.43/10.9	.49/12.4	.42/10.7	.99/25.1
191600197	MCAP-R	RED	22-6	3#22	1#8 & 3#12	600*	.36/9.1	.52/13.2	.58/14.7	.45/11.4	1.16/29.5



SECTION C-C
SCALE 2:1

REF NOTES:

- 1.) WORKING TEMP. -105°C
- 2.) HOUSING MATERIAL: UL 94V-2
FLAME RETARDANT THERMOPLASTIC
- 3.) * = 1000V MAX. IN LIGHTING FIXTURES AND SIGNS.
- 4.) MOLEX UL FILE NO.: E32244



EC NO: DRWN: ASAYDEH 2005/11/03 CHKD: RDEROSS 2005/11/15 APPR: RDEROSS 2005/11/21 REV: B	QUALITY SYMBOLS ▽ = 0 ▽ = 0	GENERAL TOLERANCES (UNLESS SPECIFIED)		SCALE 1:1	DESIGN UNITS INCH	THIRD ANGLE PROJECTION	REVISE ON CAD ONLY	
		4 PLACES ± --- ± --- 3 PLACES ± --- ± --- 2 PLACES ± --- ± .02 1 PLACE ± 0.05 ± ---	mm INCH	DIMENSION STYLE IN/MM		TITLE WIRE NUT CONNECTORS EASY-CAP TYPE		
		ANGULAR ± 1 °	DRAFT WHERE APPLICABLE MUST REMAIN WITHIN DIMENSIONS	DRAWN BY B.RUPERT CHECKED BY J.PAWLIC APPROVED BY R.DEROSS	DATE 11/07/03 DATE 11/08/03 DATE 11/09/03	Molex MATERIAL NO. SEE CHART MOLEX INCORPORATED DOCUMENT NO. SD-19160-004		
				THIS DRAWING CONTAINS INFORMATION THAT IS PROPRIETARY TO MOLEX INCORPORATED AND SHOULD NOT BE USED WITHOUT WRITTEN PERMISSION		SHEET NO. 1 OF 1	B	