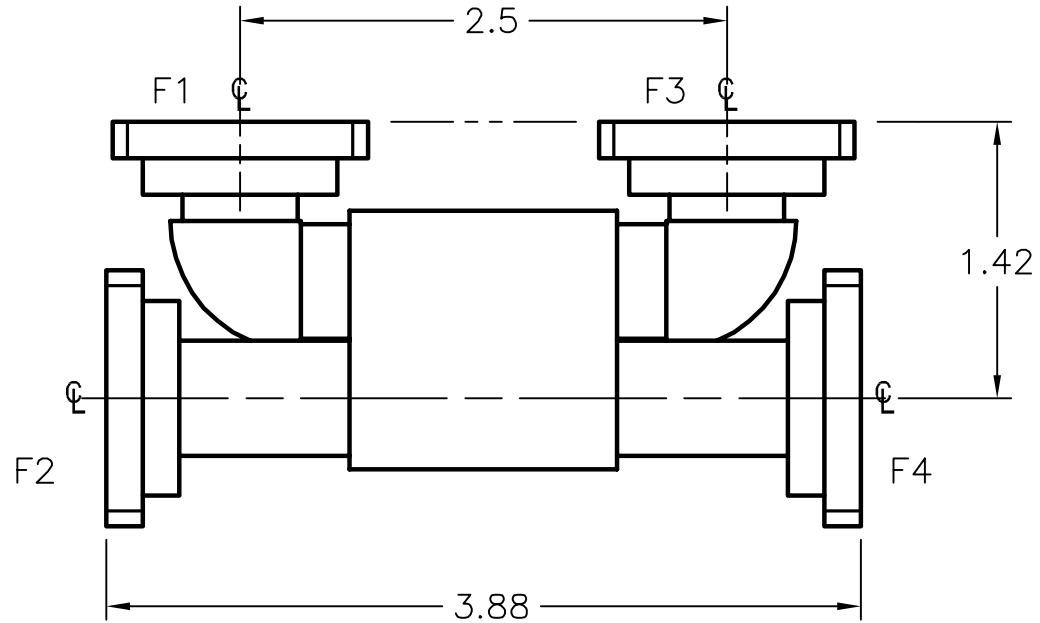


REV <b>A</b>	AUTH <b>JLE</b>	DATE <b>10/17/02</b>	INITIAL RELEASE
REV <b>B</b>	AUTH <b>RL</b>	DATE <b>10/23/06</b>	NOTES, TOLERANCES CORRECTED; FORMAT UPDATE.



FREQUENCY	MODEL
15.5–17.5 GHz	51–261A–Z–X–X–X–X
17.35–19.65 GHz	51–262A–Z–X–X–X–X

*ATM MODEL # DESIGNATION FOR COMMON FLANGE TYPES
6 = UG COVER
7 = UG CHOKE
8 = COVER-GROOVE

THIRD ANGLE PROJECTION:		APPROVALS	DATE		ADVANCED TECHNICAL MATERIALS, INC.		THE INFORMATION IN THIS DRAWING IS PROPRIETARY AND SHALL NOT BE USED OR DISCLOSED WITHOUT THE PRIOR WRITTEN CONSENT OF ATM, INC. DO NOT SCALE DWGS.	
UNLESS OTHERWISE NOTED, DIMENSIONS ARE IN INCHES, TOLERANCES ARE: FRACTIONS: ±1/64 ANGLES: ±1/2°		DRAWN <b>JLE</b>	<b>10/17/02</b>		TEL: (631) 289-0363 FAX: (631) 289-0358	www.atmmicrowave.com		
		BASIC DIMENSION		DECIMALS		APRVD.		
		2 PLACE	3 PLACE	MATERIAL <b>PER ORDER</b>		OUTLINE, WR51 HYBRID COUPLER (COMBINER-DIVIDER)		
UNDER 6"	<b>±.02</b>	<b>±.005</b>	TREATMENT -		SIZE <b>A</b>	CAGE CODE 0R8N4	ATM DWG # <b>5232W</b>	REVISION <b>B</b>
6" - 12"	<b>±.03</b>	<b>±.010</b>	FINISH -		SCALE <b>1 : 1</b>	MODEL # <b>51-26XZ-XX-F1-F2-F3-F4</b>	SHEET <b>1/1</b>	
OVER 12"	<b>±.06</b>	<b>±.015</b>						