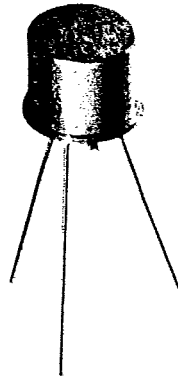


# Plug In Attenuators

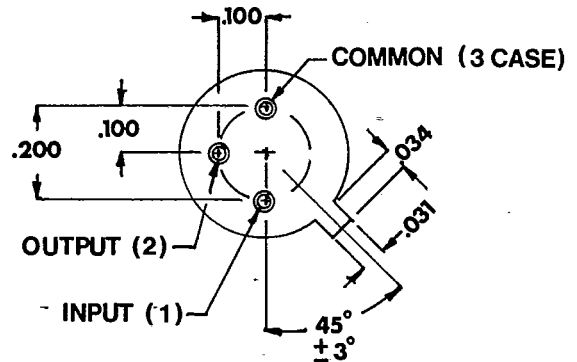
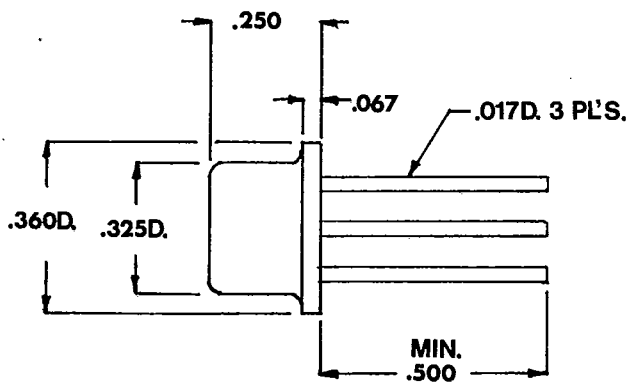
## PI SERIES

The PI Series of attenuator pads are available in values from 1 to 20dB. These units are ideal for PC board mounting or socket applications.



### ELECTRICAL SPECIFICATIONS

MODEL	50PI
ATTENUATION RANGE	1-20dB
FREQUENCY RANGE	DC-500MHz
IMPEDANCE	50 Ohms
ACCURACY	±0.5dB
AVERAGE POWER	1 Watt
PEAK POWER	500 Watts



**TO ORDER SPECIFY:** Impedance, Category (PI) and total attenuation. For example, to order a unit with 10 dB attenuation, order Model 50PI 10.