

Monolithic crystal filter

MQF21.4-1200/29



Application

- 2 pol filter
- i.f.- filter
- use in mobile and stationary transceivers

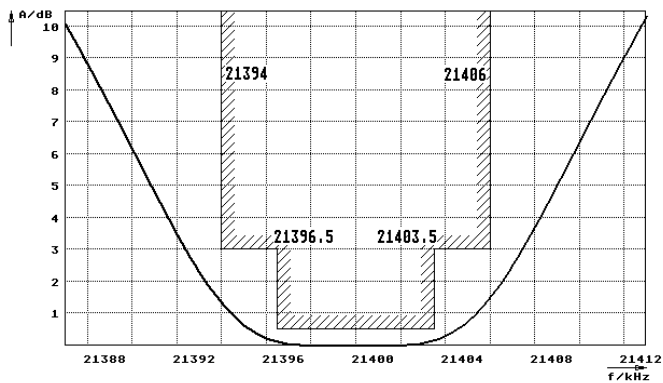
Limiting values		Unit	Value
Nominal frequency	f_0	MHz	21.4
Insertion loss		dB	< 1.5
Pass band at 3.0dB		kHz	$\pm > 6$
Ripple in pass band	$f_0 \pm 3.5 \text{ kHz}$	dB	< 0.5
Stop band attenuation	$f_0 \pm 25 \text{ kHz}$	dB	> 20
	$f_0 \pm 200 \text{ kHz}$	dB	> 35
Alternate attenuation	$f_0 + 350..1000\text{kHz}$	dB	> 35
	$f_0 - 200..1000\text{kHz}$	dB	> 50

Terminating impedance Z			
R1 C1		Ohm/pF	1200 3
R2 C2		Ohm/pF	1200 3

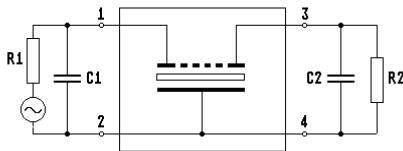
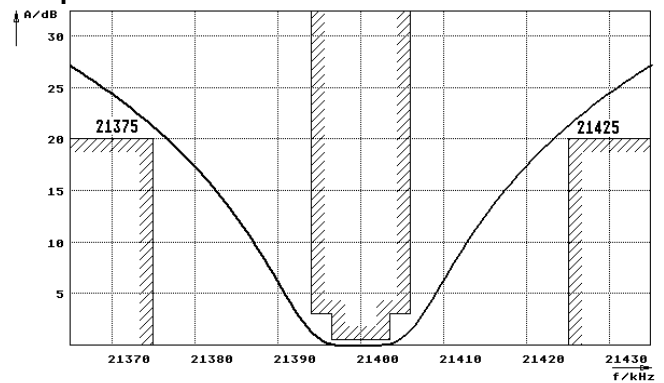
Operating temp. range	°C	-20... +70
Storage temp. range	°C	-45... +85
Environment conditions		according to CF001

Characteristics MQF21.4-1200/29

Pass band



Stop band



- Pin connections:
- 1 Input
 - 2 Ground-Input
 - 3 Output
 - 4 Ground-Output

