

# Monolithic crystal filter

## MQF21.4-1200/18



### Application

- 8 pol filter
- i.f.- filter
- use in mobile and stationary transceivers

### Limiting values

		Unit	Value
Center frequency	$f_0$	MHz	21.4
Insertion loss		dB	$\leq 3.0$
Pass band at 3.0 dB		kHz	$\pm 6.00$
Ripple in pass band	$f_0 \pm 4.00$ kHz	dB	$\leq 2.0$
Stop band attenuation	$f_0 \pm 14$ kHz	dB	$\geq 65$
	$f_0 \pm 20$ kHz	dB	$> 90$
Alternate attenuation	$f_0 \pm 20 \dots 300$ kHz	dB	$> 65$

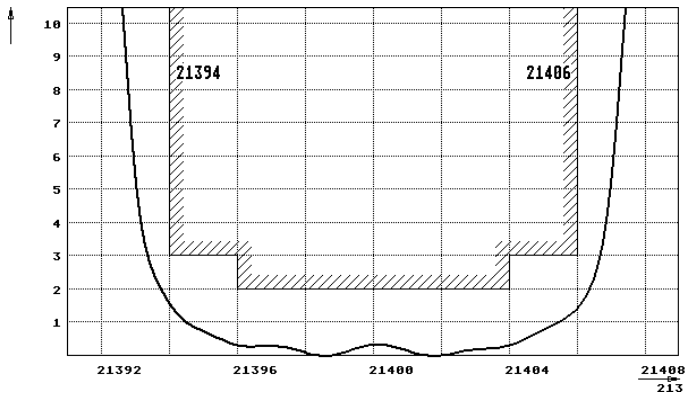
### Terminating impedance Z

R1    C1	Ohm/pF	1200    2.5
R2    C2	Ohm/pF	1200    2.5

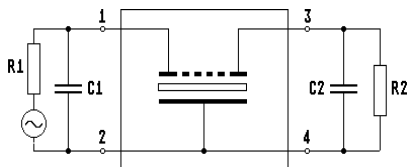
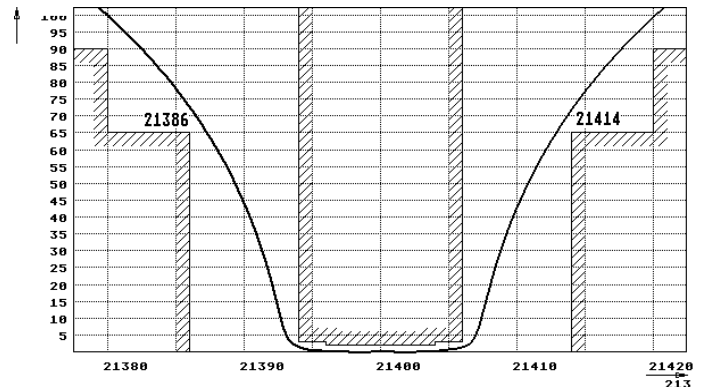
Operating temp. range	° C	-20... +70
-----------------------	-----	------------

### Characteristics MQF21.4-1200/18

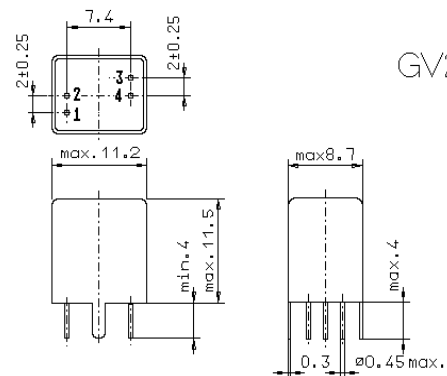
#### Pass band



#### Stop band



Pin connections: 1 Input  
2 Input-E  
3 Output  
4 Output-E



GV2.1