

6V 350 mA DC-DC Converter EPC1011

Features

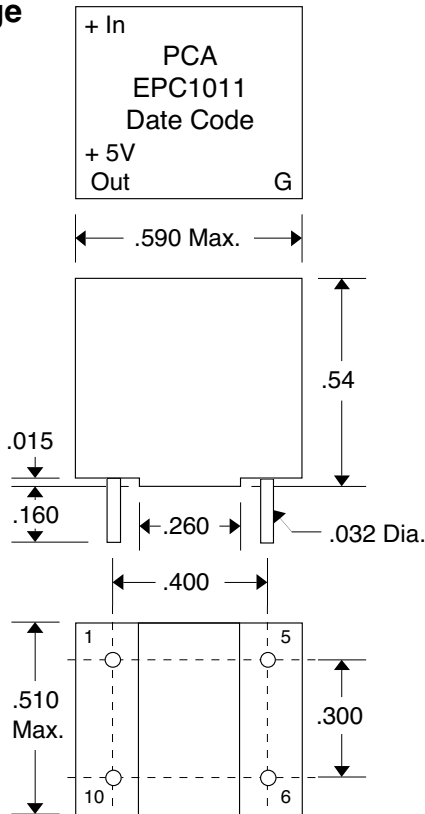
- 11V to 40V Input voltage
- Internal temporary short circuit protection
- Low quiescent current & high efficiency
- Output voltage regulated to $\pm 1.7\%$

Electrical Specifications

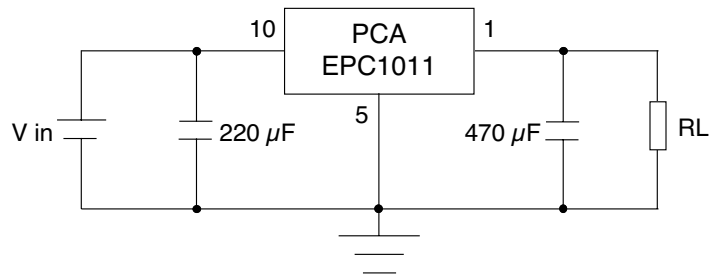
Parameters	Min.	Typ.	Max.	Unit
Input Voltage (V_{in})	11		40	Volts
Output Voltage (V_o) (@ $V_{in} = 15V$ to $30V$, $I_o = 0$ to 400 mA, Temp. = $25^{\circ}C \pm 5^{\circ}C$)	5.9	6.0	6.1	Volts
Output Current (I_o)	0		350	mA
Short Circuit Current Limit (@ $V_{in} = 15V$)			250	mA

Parameters	Min.	Typ.	Max.	Unit
Quiescent Current (@ $V_{in} = 15V$)		3		mA
Efficiency (@ $I_o = 200$ mA, $V_{in} = 15V$, Temp. = $25^{\circ}C \pm 5^{\circ}C$)	70	80		%
Operating Temperature	-10	25	70	$^{\circ}C$
Storage Temperature	-25		85	$^{\circ}C$

Package



Test Circuit



Pin 1 = V out +
Pin 5 = Gnd
Pin 10 = V in +
Pin 6 = N.C.

*Capacitors should be mounted less than 20mm from pins