

# CWP/CWL Series

## High Precision 50-Hz KWh-meter Current Transformer

www.DataSheet4U.com

### Features

- Negligible amplitude error due to low core losses.
- Reduced phase error due to simple electronic calibration.
- Improved stability of the permeability across the entire temperature range.
- Reduced core size or number of windings.
- Frequency 50/60 Hz.
- Operating temperature from  $-40^{\circ}\text{C}$  to  $85^{\circ}\text{C}$ .



### Product List

Part number for pins	Part number for lead wire	$I_p$ (ARMS)	$I_{pmax}$ (ARMS)	$I_{DCmax}$ (ADC)	Phase error $\tan \Phi$ ( $^{\circ}$ )	Burden $R_B$ ( $\Omega$ )	Burden voltage $V_B$ ( $V_{RMS}$ )	Centre hole $\varnothing$ (mm)
CWP-0061 B1	CWL-0061 C1	0.10 - 6	6	-	$< 0.5$	125.0	0.3	6/7
CWP-0062 B1 (*)	CWL-0062 C1 (*)	0.10 - 6	6	-	$< 0.6$	100.0	0.3	6/7
-	CWL-0201 A1	0.25 - 20	79	-	$< 0.3$	37.5	0.3	5
-	CWL-0202 A1	0.25 - 20	135	36	$< 4$	37.5	0.3	5
-	CWL-0601 A2	0.50 - 60	83	-	$< 0.2$	12.5	0.3	7
CWP-0600 B2	CWL-0602 A2	0.50 - 60	270	80	$< 3.7$	12.5	0.3	8.5/7
-	CWL-1001 A3	1 - 100	176	-	$< 0.15$	7.5	0.3	10
CWP-1000 B3	CWL-1002 A3	1 - 100	345	113	$< 5$	7.5	0.3	11.5/9.5

### Notes:

$N_{sec} = 2500$        $*N_{sec} = 2000$

$I_p$  primary-current range.

$I_{pmax}$  max. permissible AC-primary current without saturation.

$I_{DCmax}$  max. DC-current value without saturation for class 1-counter (IEC 1036).

$\tan \Phi$  max. phase error concerning of  $I_p$ .

$R_B$  burden resistance for 0.3V signal voltage at  $I_{pmax}$ .

$V_B$  burden voltage  $R_B$  during max  $I_p$ .

Linearity better than  $< 0.3\%$  between 0.1A to  $I_p$ .

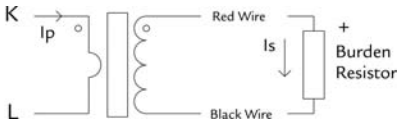
Amplitude error better than 1%.

Values in product list are referenced to 50 Hz measurements.

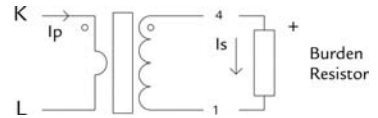
Dielectric strength 2500 Vac/50 Hz/1 min.

Contact us for further technical data.

### Test Circuit and Electrical Schematic



FOR A AND C HOUSING



FOR B HOUSING

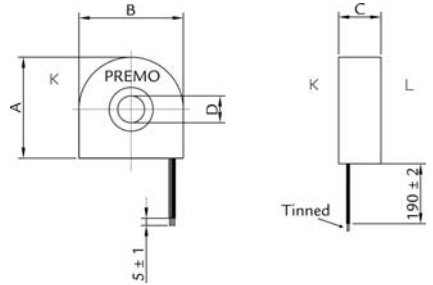
# CWP/CWL Series

High Precision 50-Hz KWh-meter Current Transformer

www.DataSheet4U.com

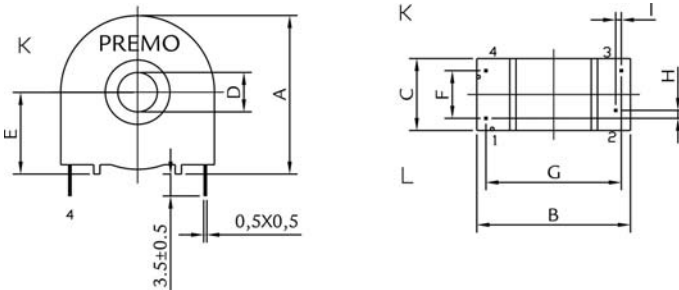
## Dimensions for A housing

Type	A (MAX)	B (MAX)	C (MAX)	D (MIN)
A1	30.5	29.0	15	5.0
A2	31.5	31.5	15	8.0
A3	35.0	35.0	19	9.5



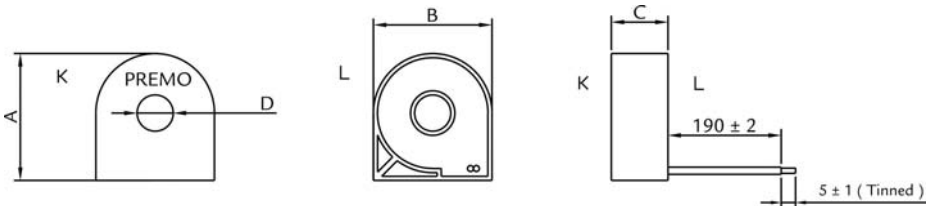
## Dimensions for B housing

Type	A (MAX)	B (MAX)	C (MAX)	D (MIN)	E (±0.1)	F (±0.1)	G (±0.1)	H (±0.1)	I (±0.1)
B1	25.5	25.0	12.0	6.0	13.0	7.62	21.59	1.27	0.00
B2	31.5	32.0	15.0	8.0	16.0	10.00	25.50	2.54	2.54
B3	34.5	34.5	15.0	11.5	17.3	10.16	27.94	2.54	2.54



## Dimensions for C housing

Type	A (MAX)	B (MAX)	C (MAX)	D (MIN)
C1	25.0	23.5	11.5	7.0



Tolerances ± 0.1 unless otherwise noted.  
Dimensions in mm.