

PLEASE CHECK WWW.MOLEX.COM FOR LATEST PART INFORMATION

Part Number: [0194310013](#)
Status: **Active**
Overview: [mx150l sealed connector system](#)
Description: MX150L™ Circuit Plug to be Used with 8, 10 and 12 AWG Wire

Documents:

[Drawing \(PDF\)](#) [RoHS Certificate of Compliance \(PDF\)](#)
[Product Specification PS-19432-001 \(PDF\)](#)

General

Product Family	Accessories
Series	19431
Component Type	Wire Plug
Overview	mx150l sealed connector system
Product Literature Order No	987650-2181
Product Name	MX150L™

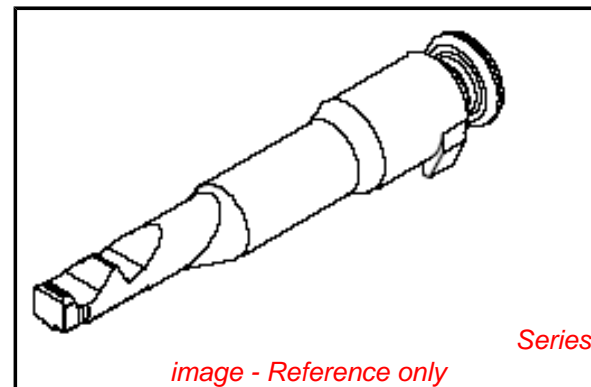
Physical

Circuits (Loaded)	0
Circuits (maximum)	150
Gender	Plug
Lock to Mating Part	No
Number of Rows	1
Packaging Type	Bag
Polarized to Mating Part	Yes
Temperature Range - Operating	-40°C to +125°C

Material Info

Reference - Drawing Numbers

Product Specification	PS-19432-001
Sales Drawing	SD-19431-001



EU RoHS

**ELV and RoHS
Compliant**
REACH SVHC
 Not Reviewed
Halogen-Free
Status
Not Reviewed

China RoHS



**Need more information on product
environmental compliance?**

Email productcompliance@molex.com
 For a multiple part number RoHS Certificate of
 Compliance, [click here](#)

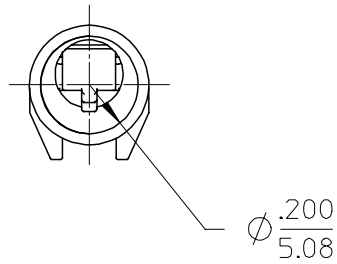
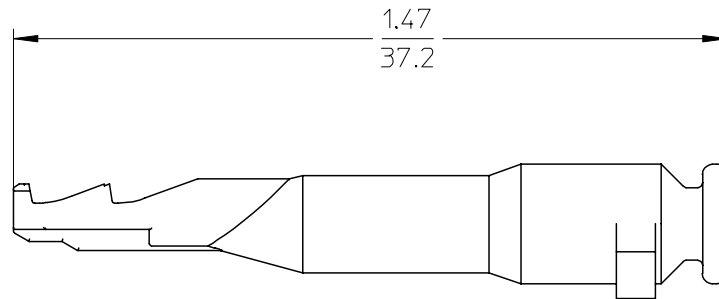
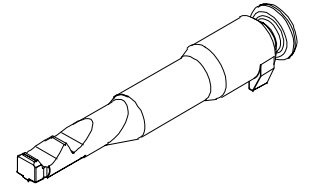
Please visit the [Contact Us](#) section for any
 non-product compliance questions.

Search Parts in this Series

[19431Series](#)

Use With

[19432](#) MX150L™ Female Receptacle.
[19433](#) MX150L™ Circuit Plug



NOTES:

- 1. GENERIC MATERIAL NAME: POLYBUTYLENE TEREPHTALATE
MATERIAL ABBREVIATION: PBT
COLOR: NATURAL
GLASS FILLED, UL94 V-0
- 2. PART IS DESIGNED TO BE USED ON 19432 SERIES RECEPTACLE ASSEMBLIES OR 19433 SERIES PLUG ASSEMBLIES.
- 3. PART IS PACKAGED 60 STRIPS OF 10 IN A 96707-0023 CARTON. (A)

DWG UPDATE EC NO: ETC2005-0223 DRWNR: BRUPERT 2005/09/01 CHKD: JPAWLICK 2005/09/02 APPR: RDEROSS 2005/09/06	DESCRIPTION REV	QUALITY SYMBOLS ▽=0 ▽=0	GENERAL TOLERANCES (UNLESS SPECIFIED)		DIMENSION STYLE IN/MM	SCALE 4:1	DESIGN UNITS INCH	THIRD ANGLE PROJECTION	
		4 PLACES ± --- ± ---	mm INCH	DRAWN BY BRUPERT	DATE 2004/09/22	TITLE MX150 CIRCUIT PLUG 10-12,8AWG			
		3 PLACES ± --- ± .010		CHECKED BY JPAWLICK	DATE 2004/09/22	APPROVED BY RDEROSS			
		2 PLACES ± 0.26 ± .02 1 PLACE ± 0.5 ± --- ANGULAR ± 1 °		MATERIAL NO. 19431-0013	DATE 2004/09/22	MOLEX INCORPORATED		DOCUMENT NO. SD-19431-001	SHEET NO. 1 OF 1
DRAFT WHERE APPLICABLE MUST REMAIN WITHIN DIMENSIONS			THIS DRAWING CONTAINS INFORMATION THAT IS PROPRIETARY TO MOLEX INCORPORATED AND SHOULD NOT BE USED WITHOUT WRITTEN PERMISSION						