

PLEASE CHECK WWW.MOLEX.COM FOR LATEST PART INFORMATION

Part Number: [0025021032](#)
Status: **Active**
Description: 2.54mm (.100") Pitch C-Grid® Header, Dual Row, Shrouded, with PC Slot and Guide Ear, 32 Circuits, 0.76µm (30µ") Gold (Au) Selective Plating

Documents:

| | |
|---|--|
| 3D Model | Product Specification PS-70204 (PDF) |
| Packaging Specification (PDF) | RoHS Certificate of Compliance (PDF) |
| Drawing (PDF) | |

Agency Certification

| | |
|-----|---------|
| CSA | LR19980 |
| UL | E29179 |

General

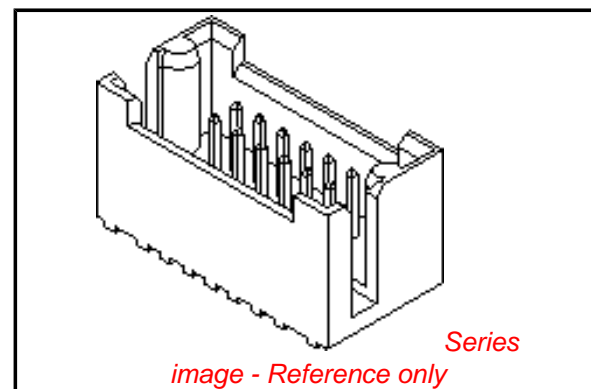
| | |
|----------------|-----------------------|
| Product Family | PCB Headers |
| Series | 70204 |
| Application | Board-to-Board |
| Product Name | C-Grid® |

Physical

| | |
|--------------------------------|------------------------|
| Breakaway | No |
| Circuits (Loaded) | 32 |
| Circuits (maximum) | 32 |
| Color - Resin | Black |
| Durability (mating cycles max) | 50 |
| Flammability | 94V-0 |
| Glow-Wire Compliant | No |
| Guide to Mating Part | Yes |
| Lock to Mating Part | None |
| Material - Metal | Brass, Phosphor Bronze |
| Material - Plating Mating | Gold |
| Material - Plating Termination | Tin |
| Material - Resin | Nylon |
| Number of Rows | 2 |
| Orientation | Vertical |
| PC Tail Length (in) | 0.110 In |
| PC Tail Length (mm) | 2.79 mm |
| PCB Locator | No |
| PCB Retention | None |
| Packaging Type | Tray |
| Pitch - Mating Interface (in) | 0.100 In |
| Pitch - Mating Interface (mm) | 2.54 mm |
| Plating min: Mating (µin) | 30 |
| Plating min: Mating (µm) | 0.75 |
| Plating min: Termination (µin) | 75 |
| Plating min: Termination (µm) | 1.91 |
| Polarized to Mating Part | Yes |
| Polarized to PCB | No |
| Shrouded | Fully |
| Stackable | No |
| Temperature Range - Operating | -40°C to +105°C |
| Termination Interface: Style | Through Hole |

Electrical

| | |
|-------------------------------|----|
| Current - Maximum per Contact | 3A |
|-------------------------------|----|



EU RoHS

ELV and RoHS Compliant
REACH SVHC Contains SVHC: No
Halogen-Free Status

China RoHS



Not Reviewed

Need more information on product environmental compliance?

Email productcompliance@molex.com
 For a multiple part number RoHS Certificate of Compliance, [click here](#)

Please visit the [Contact Us](#) section for any non-product compliance questions.

Search Parts in this Series

[70204Series](#)

Mates With

[71973](#)

Voltage - Maximum 250V

Solder Process Data

Duration at Max. Process Temperature (seconds) 5
Lead-free Process Capability Wave Capable (TH only)
Max. Cycles at Max. Process Temperature 1
Process Temperature max. C 245

Material Info

Old Part Number 70204-0335

Reference - Drawing Numbers

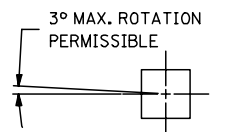
Product Specification PS-70204
Sales Drawing SDA-70204-0321-0384

This document was generated on 03/31/2010

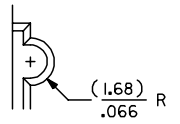
PLEASE CHECK WWW.MOLEX.COM FOR LATEST PART INFORMATION

| CKT. SIZE | PART NUMBER | ENG. NUMBER SDA-70204- | DIM. "A" | | DIM. "B" | | DIM. "C" | |
|-----------|-------------|------------------------|----------|-------|----------|-------|----------|-------|
| | | | MM | IN. | MM | IN. | MM | IN. |
| 08 | 25-02-1008 | 0323 | 7,62 | .300 | 17,78 | .700 | 20,32 | .800 |
| 10 | 25-02-1010 | 0324 | 10,16 | .400 | 20,32 | .800 | 22,86 | .900 |
| 12 | 25-02-1012 | 0325 | 12,70 | .500 | 22,86 | .900 | 25,40 | 1.000 |
| 14 | 25-02-1014 | 0326 | 15,24 | .600 | 25,40 | 1.000 | 32,51 | 1.100 |
| 16 | 25-02-1016 | 0327 | 17,78 | .700 | 27,94 | 1.100 | 30,48 | 1.200 |
| 18 | 25-02-1018 | 0328 | 20,32 | .800 | 30,48 | 1.200 | 33,02 | 1.300 |
| 20 | 25-02-1020 | 0329 | 22,86 | .900 | 33,02 | 1.300 | 35,56 | 1.400 |
| 22 | 25-02-1022 | 0330 | 25,40 | 1.000 | 35,56 | 1.400 | 38,10 | 1.500 |
| 24 | 25-02-1024 | 0331 | 27,94 | 1.100 | 38,10 | 1.500 | 40,64 | 1.600 |
| 26 | 25-02-1026 | 0332 | 30,48 | 1.200 | 40,64 | 1.600 | 43,10 | 1.700 |
| 28 | 25-02-1028 | 0333 | 33,02 | 1.300 | 43,10 | 1.700 | 45,72 | 1.800 |
| 30 | 25-02-1030 | 0334 | 35,56 | 1.400 | 45,72 | 1.800 | 48,26 | 1.900 |
| 32 | 25-02-1032 | 0335 | 38,10 | 1.500 | 48,26 | 1.900 | 50,80 | 2.000 |
| 34 | 25-02-1034 | 0336 | 40,64 | 1.600 | 50,80 | 2.000 | 53,34 | 2.100 |
| 36 | 25-02-1036 | 0337 | 43,10 | 1.700 | 53,34 | 2.100 | 55,88 | 2.200 |
| 38 | 25-02-1038 | 0338 | 45,72 | 1.800 | 55,88 | 2.200 | 58,42 | 2.300 |
| 40 | 25-02-1040 | 0339 | 48,26 | 1.900 | 58,42 | 2.300 | 60,96 | 2.400 |

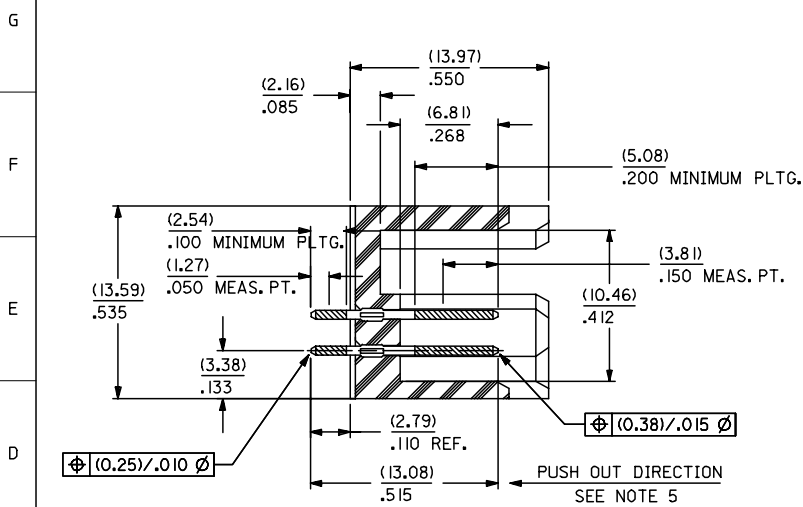
| CKT. SIZE | PART NUMBER | ENG. NUMBER SDA-70204- | DIM. "A" | | DIM. "B" | | DIM. "C" | |
|-----------|-------------|------------------------|----------|-------|----------|-------|----------|-------|
| | | | MM | IN. | MM | IN. | MM | IN. |
| 42 | 25-02-1042 | 0340 | 50,80 | 2.000 | 60,96 | 2.400 | 63,50 | 2.500 |
| 44 | 25-02-1044 | 0341 | 53,34 | 2.100 | 63,50 | 2.500 | 66,04 | 2.600 |
| 46 | 25-02-1046 | 0342 | 55,88 | 2.200 | 66,04 | 2.600 | 68,58 | 2.700 |
| 48 | 25-02-1048 | 0343 | 58,42 | 2.300 | 68,58 | 2.700 | 71,12 | 2.800 |
| 50 | 25-02-1050 | 0344 | 60,96 | 2.400 | 71,12 | 2.800 | 73,66 | 2.900 |
| 52 | 25-02-1052 | 0345 | 63,50 | 2.500 | 73,66 | 2.900 | 76,20 | 3.000 |
| 54 | 25-02-1054 | 0346 | 66,04 | 2.600 | 76,20 | 3.000 | 78,74 | 3.100 |
| 56 | 25-02-1056 | 0347 | 68,58 | 2.700 | 78,74 | 3.100 | 81,28 | 3.200 |
| 58 | 25-02-1058 | 0348 | 71,12 | 2.800 | 81,28 | 3.200 | 83,82 | 3.300 |
| 60 | 25-02-1060 | 0349 | 73,66 | 2.900 | 83,82 | 3.300 | 86,36 | 3.400 |
| 62 | 25-02-1062 | 0350 | 76,20 | 3.000 | 86,36 | 3.400 | 88,90 | 3.500 |
| 64 | 25-02-1064 | 0351 | 78,74 | 3.100 | 88,90 | 3.500 | 91,44 | 3.600 |
| 66 | 25-02-1066 | 0352 | 81,28 | 3.200 | 91,44 | 3.600 | 93,98 | 3.700 |
| 68 | 25-02-1068 | 0353 | 83,82 | 3.300 | 93,98 | 3.700 | 96,52 | 3.800 |
| 70 | 25-02-1070 | 0354 | 86,36 | 3.400 | 96,52 | 3.800 | 99,06 | 3.900 |
| 72 | 25-02-1072 | 0355 | 88,90 | 3.500 | 99,06 | 3.900 | 101,60 | 4.000 |



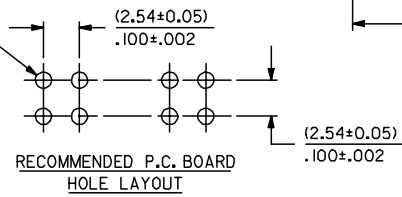
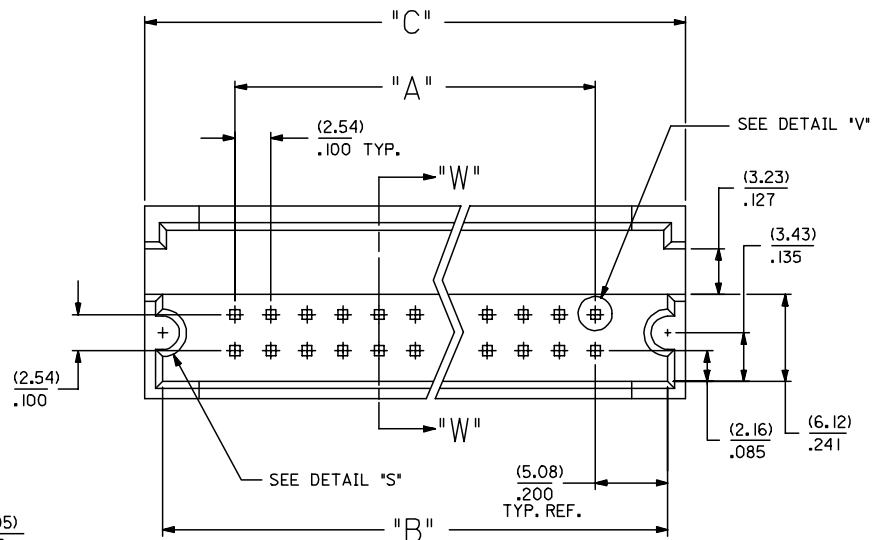
DETAIL "V"
SCALE = 20:1



DETAIL "S"



SECTION W-W



RECOMMENDED P.C. BOARD HOLE LAYOUT

NOTES:

- 1) WAFER MATERIAL: GLASS FILLED NYLON COLOR, BLACK.
- 2) PIN MATERIAL: PHOSPHOR BRONZE ALLOY
- 3) PIN PLATING:
TIP: .000030 MINIMUM GOLD IN SELECTED AREA
TAIL: .000075 MINIMUM TIN IN SELECTED AREA
OVER .000050 NICKEL OVER-ALL.
- *THE PRIMARY SHIPPING CARTON WILL BE LABELED 'COMPLIANT TO RoHS DIRECTIVE 2002/95/EC AND ELV ANNEX II OF DIRECTIVE 2000/53/EC'. CARTONS WITHOUT THIS LABEL MAY CONTAIN PRODUCT WITH LEAD.
- 4) PINS MUST MEET SOLDERABILITY SPEC. NO. 152.
- 5) PIN PUSH-OUT FORCE (1.81 KG.) / 4 LBS MINIMUM
- 6) REFER TO P.S. NO. 70204.
- 7) STANDARD PACKAGING PER: PK-70873-0070.

| | | | | | | |
|--|-------------------------------|---|--------------------------|--------------------|--|-------------------------------------|
| REMOVE 0356-0384 FC NO: UCP2007-0113 DRAWN: JORGAN 2006/08/07 CHKD: MS BARRA 2006/08/16 APPR: SMILLER 2006/08/18 | QUALITY SYMBOLS ▽=0 ▽=0 | GENERAL TOLERANCES (UNLESS SPECIFIED) | DIMENSION STYLE MM/IN | SCALE 4:1 | DESIGN UNITS INCH | THIRD ANGLE PROJECTION |
| | | 4 PLACES ± .25 ± .010 3 PLACES ± .25 ± .010 2 PLACES ± .25 ± .010 1 PLACE ± .25 ± .010 | DRAWN BY JAS | DATE 1986/05/20 | TITLE SHROUDED HEADER DUAL ROW W/PCB SLOTS & GUIDE EARS .100 GRID .025 SQ PIN | |
| | | ANGULAR ±1/2° | APPROVED BY WAZ | DATE 1986/05/20 | MATERIAL NO. | DOCUMENT NO. SDA-70204-0321-0384 |
| | | DRAFT WHERE APPLICABLE MUST REMAIN WITHIN DIMENSIONS | SIZE C | SEE TABLE | SHEET NO. 1 OF 1 | |