

PLEASE CHECK WWW.MOLEX.COM FOR LATEST PART INFORMATION

Part Number: [1120050009](#)
Status: **Active**
Description: BradCommunications™ Direct-Link™ PC104-DVNIO DeviceNet card, PC/104 bus

Documents:

[Drawing \(PDF\)](#) [RoHS Certificate of Compliance \(PDF\)](#)

General

Product Family	Network Interface
Series	112005
Approvals	N/A
Communication Speed	1K to 500K bps
Mounting Style	N/A
Product Name	Direct-Link®
Protocol	DeviceNet* Master/Slave
Type	DeviceNet* Card

Physical

Channels	1
Interface	CANopen*
Network Connection Type	Combicon (5 pin)
Packaging Type	Carton
Processor	AMD SD520
Temperature Range - Operating	0°C to +65°C

Electrical

EMC	N/A
Supply Voltage	6W (max. 1.2A)

Material Info

Old Part Number	DRL-DVN-104
-----------------	-------------

Reference - Drawing Numbers

Sales Drawing	E-112005-0009
---------------	---------------

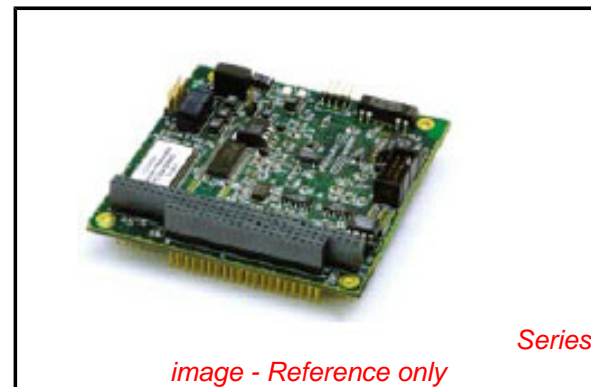


image - Reference only

EU RoHS

**ELV and RoHS
Compliant**
**REACH SVHC
Not Reviewed**
**Halogen-Free
Status**

China RoHS



**Need more information on product
environmental compliance?**

Email productcompliance@molex.com
 For a multiple part number RoHS Certificate of Compliance, [click here](#)

Please visit the [Contact Us](#) section for any non-product compliance questions.

Search Parts in this Series
[112005Series](#)

PLEASE CHECK WWW.MOLEX.COM FOR LATEST PART INFORMATION




11 Sep. 06
DW200592

BradCommunications™ Direct-Link™ DeviceNet network interface cards allow deterministic I/O data acquisition for PC-based control applications.

Direct-Link™ DeviceNet

Data acquisition for real time Control applications

Features

- **NEW! RoHS compliant**
- Automatic devices detection on the network
- Connect PC-Based Control applications directly to I/O devices
- Protocol: DeviceNet Master/Slave
- 1 Serial or Ethernet port for remote configuration and diagnostic 
- Embedded Communication on the card for powerful data throughput
- Automatic I/O mapping for easy configuration
- Certified by the ODVA Test Lab

OS supported

Standard package

- Windows 32-bit (XP SP1/ 2000 SP4 / NT SP6, 2003 Server), Ardence RTX

Free Download

- Windows XP Embedded, QNX, VxWorks, Linux, Phar Lap ETS, DOS

Woodhead is a member of ODVA (Open Device Vendors Association)



PCI-Universal



PC/104

Overview

BradCommunications™ Direct-Link™ is a low range of automation components for industrial communication. It includes a variety of products such as diagnostic tools, intelligent connectors, tunneling gateways, fieldbuses network interface cards, and software drivers for industrial networks.

Simple as they are affordable, BradCommunications™ Direct-Link™ products allow you to acquire the equipment to develop your architectures and industrial applications at a lower cost.

Direct-Link™ products are characterized by their simple use and fast implementation; they are modular and scalable. Moreover, they are designed to be easily embedded into computerized systems and are available in a wide selection of form factors.

Powerful Network Interface card

Particularly, the **BradCommunications™ Direct-Link™ DeviceNet** interface cards are equipped with 1 DeviceNet port handling DeviceNet protocol in **both Master/Scanner and Slave modes** up to 500Kbps.

A smart A.D.M (Automatic Dual port ram Mapping) mechanism avoids the I/O tags configuration in the Dual Port RAM of the card. More than a simple I/O acquisition card, the Direct-Link™ PCU-DVNIO/PC104-DVNIO interfaces provide the applications with additional information such as: *device status and diagnostics, process data read/write monitoring, communication tools for troubleshooting, hardware and software Watchdog, etc.*

The communication layers are completely embedded on the card, allowing easy and fast communication with field devices resulting in remarkable application performance.

Product package includes:

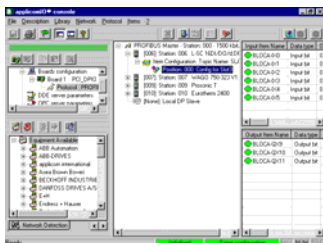
- Graphical console for configuration and diagnostic tools
- Data servers (Multi-protocol OPC DA 3.0 & 2.05, ActiveX, DAServer, FastDDE/SuiteLink)
- I/O libraries for Windows (DLL) and Ardence's hard real time extensions (RTX)
- Static library for non-windows OS
- Drivers for soft-logic packages ▲

Direct-Link™ DeviceNet

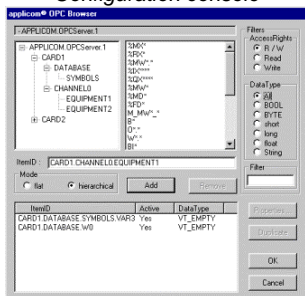


Software tools

Direct-Link™ Interface cards provide effective software tools enabling fast integration of industrial communication into your applications. The console is common to all fieldbuses of Woodhead offer as Profibus-DP, EtherNet/IP, Modbus/TCP and CANopen.



- Configuration console -



- OPC Browser -



- ActiveX implementation -



- Diagnostic and test tools -

Hardware specifications

	PCU-DVNIO	PC104-DVNIO
Bus interface	PCI Universal 3.3/5V, PCI-X compatible NEW	PC/104 bus
Processor	AMD SC520	
Memory	8 Mbytes SDRAM	
Interrupt	Hardware Plug&Play	2, 3, 4, 5, 6, 7, 10, 11, 12, 14, 15
DPRAM Address	Hardware Plug&Play (2 Kbytes used per card)	From C8000 to DE000 (8 Kbytes used per card)
Dimensions (L x W)	168mm x 107mm (6.61" x 4.21")	95mm x 90mm (3.74" x 3.54")
Consumption	6W (max. 1.2A)	5W (max. 0.8A)
Operating T°	0°C (32° F) up to +70° C (149° F)	-40°C (-40° F) up to +85°C (185° F)
Storage T°	-40°C (-40° F) up to +80°C (176° F)	-40°C (-40° F) up to +85°C (185° F)
Discrete Input	Opto-coupled discrete input Voltage -> DC +10 to +30 or AC 24 V (50 to 60 Hz)	
Discrete Output	"WatchDog" output contact free from potential (floating) (24V DC, 0.25 A)	
EMC Compliance	EN55022 Class B, EN61000-6-2, EN61000-3-2, EN61000-3-3	
RoHS Compliance	YES NEW	

1 DeviceNet port

Connector type	Standard DeviceNet connector (female connector with screw and resistance terminator included)	HE13 (2 x 5 pins)
CAN Controller	Phillips SJA 1000	
CAN Transceiver	Phillips 82C251 in conformity with DeviceNet specifications	
Speed	125, 250, 500 Kbps	
LED indicators	1 Status LED / 1 transmission LED	

Port for remote configuration and diagnostic

Port Type	Ethernet port NEW	Asynchronous Serial port
Connector type	BaseT - RJ45	HE13 (2 x 5 pins)
LED indicators	4 LEDs - TX/RX/Link/100 Mbps	-
Electrical interface	Ethernet IEEE 802.3	RS232
Speed	10/100 Mbps (auto-negotiation)	50 to 38400 bps

Protocol Specifications

DeviceNet	<ul style="list-style-type: none"> Master/Slave modes run simultaneously Devices supported: "Group 2 Only Server" and "U.C.M.M" Manage up to 63 nodes Node parameter online configuration I/O Slave messaging: Strobe, Polling, Cyclic and Change of State Explicit and I/O Peer to Peer messaging I/O data image: up to 2 Kbytes Integrated data consistency Direct access to variable types (bit, byte, word, double word) Up to 255 Bytes by Slave EDS Library
------------------	--

Ordering Information

Part Number	Product Description
DRL-DVN-PCU	BradCommunications™ Direct-Link™ PCU-DVNIO DeviceNet card, PCI-Universal bus, 3.3/5V
DRL-DVN-104	BradCommunications™ Direct-Link™ PC104-DVNIO DeviceNet card, PC/104 bus