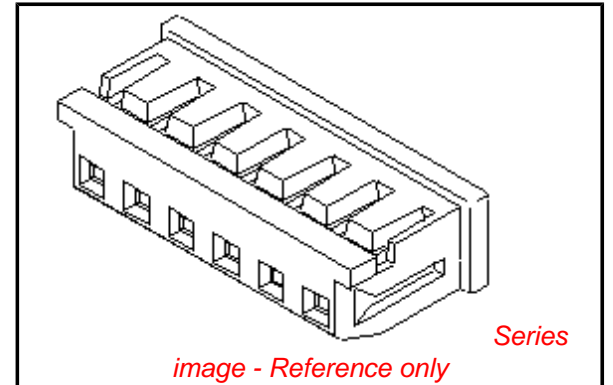


PLEASE CHECK WWW.MOLEX.COM FOR LATEST PART INFORMATION

Part Number: [0510650500](#)
Status: **Active**
Overview: [microlatch](#)
Description: 2.00mm (.079") Pitch Micro-Latch™ Wire-to-Board Housing, Friction Lock, 5 Circuits

Documents:

| | |
|--|--|
| 3D Model | Product Specification PS-51065-017 (PDF) |
| Drawing (PDF) | Product Specification PS-51065-018 (PDF) |
| Product Specification PS-51065-005 (PDF) | RoHS Certificate of Compliance (PDF) |
| Product Specification PS-51065-016 (PDF) | |



Agency Certification

| | |
|-----|---------|
| CSA | LR19980 |
| UL | E29179 |

General

| | |
|----------------|----------------------------|
| Product Family | Crimp Housings |
| Series | 51065 |
| Overview | microlatch |
| Product Name | Micro-Latch™ |

Physical

| | |
|-------------------------------|-----------------|
| Circuits (maximum) | 5 |
| Color - Resin | Natural |
| Flammability | 94V-0 |
| Gender | Female |
| Glow-Wire Compliant | No |
| Material - Resin | Polyester |
| Number of Rows | 1 |
| Packaging Type | Bag |
| Panel Mount | No |
| Pitch - Mating Interface (in) | 0.079 In |
| Pitch - Mating Interface (mm) | 2.00 mm |
| Stackable | No |
| Temperature Range - Operating | -40°C to +105°C |

Material Info

Reference - Drawing Numbers

| | |
|-------------------------|---|
| Packaging Specification | SPK-51065-001 |
| Product Specification | PS-51065-005, PS-51065-016, PS-51065-017, PS-51065-018, RPS-51065-001, RPS-51065-002, RPS-51065-006, RPS-51065-007, RPS-51065-010, RPS-51065-011, RPS-51065-012, RPS-51065-013, RPS-51065-015, RPS-51065-020, RPS-51065-021, RPS-51065-022, RPS-51065-023, RPS-51065-024, RPS-51065-025, RPS-51065-026, RPS-51065-027, RPS-51065-028, RPS-51065-029, RPS-51065-030 |
| Sales Drawing | SD-51065-004, SD-51065-005, SD-51065-006 |

| | |
|---|--|
| EU RoHS ELV and RoHS Compliant REACH SVHC Contains SVHC: No Halogen-Free Status Not Halogen-Free | China RoHS  |
|---|--|

Need more information on product environmental compliance?

Email productcompliance@molex.com
For a multiple part number RoHS Certificate of Compliance, [click here](#)

Please visit the [Contact Us](#) section for any non-product compliance questions.

Search Parts in this Series
[51065Series](#)

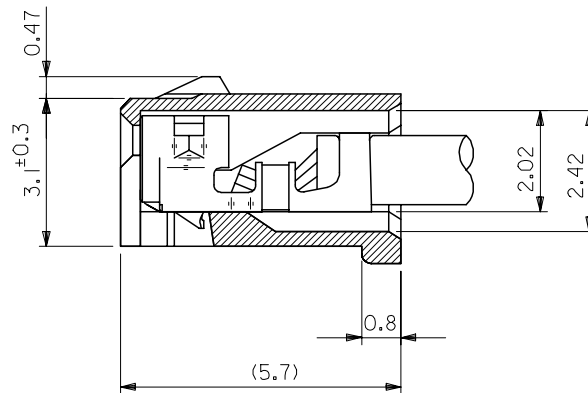
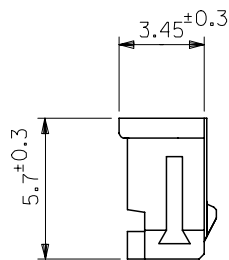
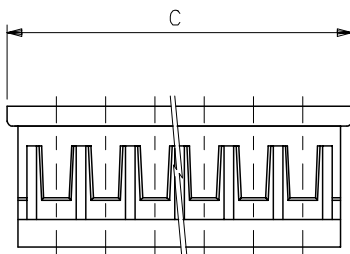
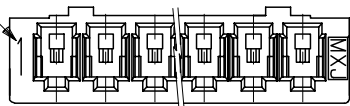
Mates With
[53253](#) PCB Header, [53254](#) PCB Header

Use With
[50212](#) Crimp Terminal

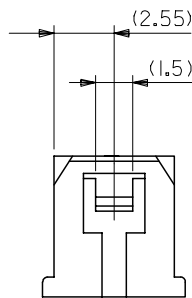
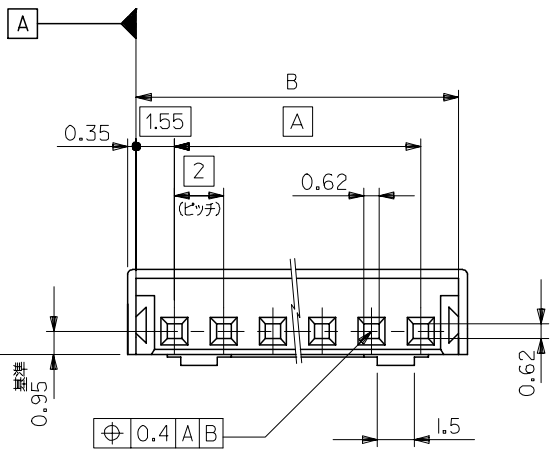
10 9 8 7 6 5 4 3 2 1

回路番号

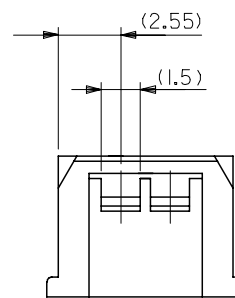
トレードマーク



ターミナル装着状態図
(10:1)



2極の場合



3極の場合

| | | | | |
|------|------|----|--------------|----|
| 31.8 | 31.1 | 28 | 51065-150* | 15 |
| 29.8 | 29.1 | 26 | -140* | 14 |
| 27.8 | 27.1 | 24 | -130* | 13 |
| 25.8 | 25.1 | 22 | -120* | 12 |
| 23.8 | 23.1 | 20 | -110* | 11 |
| 21.8 | 21.1 | 18 | -100* | 10 |
| 19.8 | 19.1 | 16 | -090* | 9 |
| 17.8 | 17.1 | 14 | -080* | 8 |
| 15.8 | 15.1 | 12 | -070* | 7 |
| 13.8 | 13.1 | 10 | -060* | 6 |
| 11.8 | 11.1 | 8 | -050* | 5 |
| 9.8 | 9.1 | 6 | -040* | 4 |
| 7.8 | 7.1 | 4 | -030* | 3 |
| 5.8 | 5.1 | 2 | 51065-020* | 2 |
| C | B | A | MATERIAL NO. | 極数 |

注記

- 適合ターミナル：50212-8*00
- 嵌合相手：53253-***10,53254-***10
- 材質：PBT. UL94V-0
- MATERIAL NO. の説明

51065-***0*

- 製品の色
- 1: 黒 (BLACK)
 - 5: 灰 (GRAY)
 - 6: 緑 (GREEN)
 - 7: 茶 (BROWN)

| | | | | | | | | | |
|--|---|--|-------|--|-------------------|---|------------------------|---------------------------|--|
| REVISED EC NO: J2006-1395 DRWN: NABE CHK: KYOYODA APPR: NUKITA | DESCRIPTION 2005/10/31 2005/11/01 2005/11/02 | GENERAL TOLERANCES (UNLESS SPECIFIED) | | DIMENSION STYLE MM ONLY | | SCALE 5:1 | DESIGN UNITS METRIC | THIRD ANGLE PROJECTION | |
| | | 10 UNDER | ±0.2 | DRAWN BY S. AIHARA | DATE '89/09/21 | TITLE NEW 2.0 WIRE TO BOARD CONN RECEPTACLE HOUSING | | | |
| | | 10 OVER 30 UNDER | ±0.25 | CHECKED BY M. FUKUSHIMA | DATE '90/01/18 | MATERIAL NO. SEE CHART | | | |
| | | 30 OVER | ±0.3 | APPROVED BY M. ENOMOTO | DATE '90/01/18 | DOCUMENT NO. SD-51065-004 | | | |
| DRAFT WHERE APPLICABLE MUST REMAIN WITHIN DIMENSIONS | | SIZE A3 | | THIS DRAWING CONTAINS INFORMATION THAT IS PROPRIETARY TO MOLEX INCORPORATED AND SHOULD NOT BE USED WITHOUT WRITTEN PERMISSION | | SHEET NO. 1 OF 2 | | | |

10 9 8 7 6 5 4 3 2 1

F

F

E

E

D

D

C

C

B

B

A

A

| | | | | | | | | |
|------|------|----|------------|------------|------------|------------|------------|----|
| 31.8 | 31.1 | 28 | 51065-1507 | 51065-1506 | 51065-1505 | 51065-1501 | 51065-1500 | 15 |
| 29.8 | 29.1 | 26 | 51065-1407 | 51065-1406 | 51065-1405 | 51065-1401 | 51065-1400 | 14 |
| 27.8 | 27.1 | 24 | 51065-1307 | | 51065-1305 | 51065-1301 | 51065-1300 | 13 |
| 25.8 | 25.1 | 22 | 51065-1207 | 51065-1206 | 51065-1205 | 51065-1201 | 51065-1200 | 12 |
| 23.8 | 23.1 | 20 | 51065-1107 | | 51065-1105 | 51065-1101 | 51065-1100 | 11 |
| 21.8 | 21.1 | 18 | 51065-1007 | 51065-1006 | 51065-1005 | 51065-1001 | 51065-1000 | 10 |
| 19.8 | 19.1 | 16 | 51065-0907 | 51065-0906 | 51065-0905 | 51065-0901 | 51065-0900 | 9 |
| 17.8 | 17.1 | 14 | 51065-0807 | 51065-0806 | 51065-0805 | 51065-0801 | 51065-0800 | 8 |
| 15.8 | 15.1 | 12 | 51065-0707 | | 51065-0705 | 51065-0701 | 51065-0700 | 7 |
| 13.8 | 13.1 | 10 | 51065-0607 | | 51065-0605 | 51065-0601 | 51065-0600 | 6 |
| 11.8 | 11.1 | 8 | 51065-0507 | | 51065-0505 | 51065-0501 | 51065-0500 | 5 |
| 9.8 | 9.1 | 6 | 51065-0407 | | 51065-0405 | 51065-0401 | 51065-0400 | 4 |
| 7.8 | 7.1 | 4 | 51065-0307 | | 51065-0305 | | 51065-0300 | 3 |
| 5.8 | 5.1 | 2 | 51065-0207 | | 51065-0205 | | 51065-0200 | 2 |
| C | B | A | BROWN | GREEN | GRAY | BLACK | NATURAL | 極数 |

| | | | | | | | | | |
|--|---------------------------------------|------------|----------------------------|--|------------------------------|------------------------|---|--|--|
| REVISED EC NO: J2006-1395 DRWN: NABE 2005/10/31 CHKDK: TOYODA 2005/11/01 APPR: NUKITA 2005/11/02 | GENERAL TOLERANCES (UNLESS SPECIFIED) | | DIMENSION STYLE MM ONLY | | SCALE 5:1 | DESIGN UNITS METRIC | THIRD ANGLE PROJECTION | | |
| | 10 UNDER | ± 0.2 | DRAWN BY S. AIHARA | | DATE '89/09/21 | | TITLE NEW 2.0 WIRE TO BOARD CONN RECEPTACLE HOUSING | | |
| | 10 OVER 30 UNDER | ± 0.25 | CHECKED BY M. FUKUSHIMA | | DATE '90/01/18 | | | | |
| | 30 OVER | ± 0.3 | APPROVED BY M. ENOMOTO | | DATE '90/01/18 | | MOLEX INCORPORATED | | |
| | ANGULAR | ± 3 ° | MATERIAL NO. SEE CHART | | DOCUMENT NO. SD-51065-004 | | SHEET NO. 2 OF 2 | | |
| DRAFT WHERE APPLICABLE MUST REMAIN WITHIN DIMENSIONS | | SIZE A3 | | THIS DRAWING CONTAINS INFORMATION THAT IS PROPRIETARY TO MOLEX INCORPORATED AND SHOULD NOT BE USED WITHOUT WRITTEN PERMISSION | | | | | |

9

8

7

6

5

4

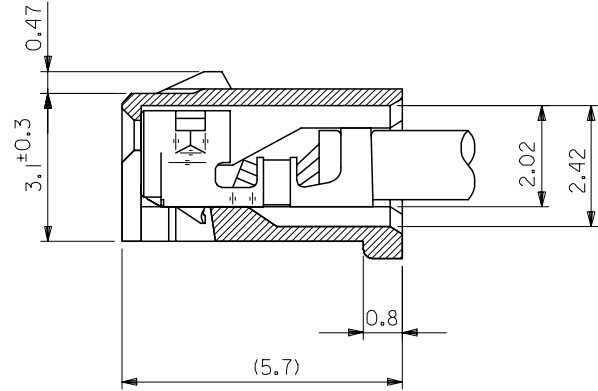
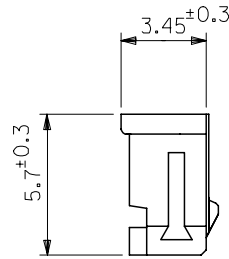
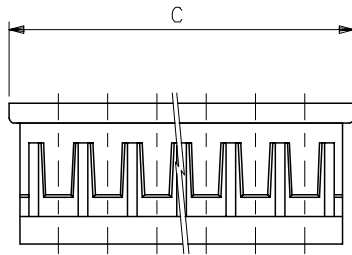
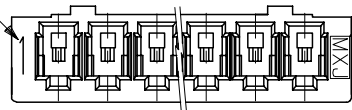
3

2

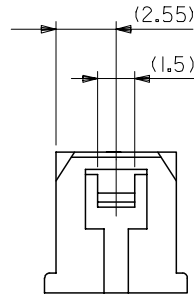
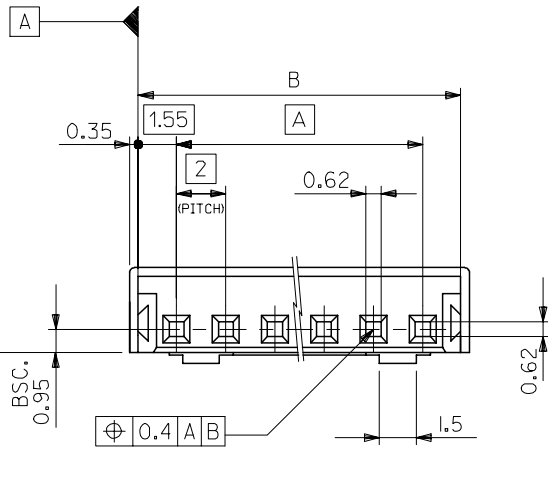
10 9 8 7 6 5 4 3 2 1

CIRCUIT NO.

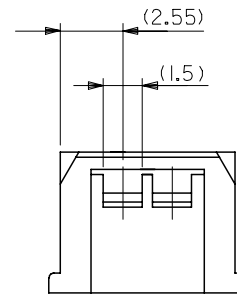
TRADE MARK



TERMINAL ASSEMBLY DRAWING
(10:1)



IN CASE OF
2 CIRCUIT HSG.



IN CASE OF
3 CIRCUIT HSG.

| | | | | |
|------|------|----|--------------|----|
| 31.8 | 31.1 | 28 | 51065-150* | 15 |
| 29.8 | 29.1 | 26 | -140* | 14 |
| 27.8 | 27.1 | 24 | -130* | 13 |
| 25.8 | 25.1 | 22 | -120* | 12 |
| 23.8 | 23.1 | 20 | -110* | 11 |
| 21.8 | 21.1 | 18 | -100* | 10 |
| 19.8 | 19.1 | 16 | -090* | 9 |
| 17.8 | 17.1 | 14 | -080* | 8 |
| 15.8 | 15.1 | 12 | -070* | 7 |
| 13.8 | 13.1 | 10 | -060* | 6 |
| 11.8 | 11.1 | 8 | -050* | 5 |
| 9.8 | 9.1 | 6 | -040* | 4 |
| 7.8 | 7.1 | 4 | -030* | 3 |
| 5.8 | 5.1 | 2 | 51065-020* | 2 |
| C | B | A | MATERIAL NO. | 極数 |

NOTES

1. APPLICABLE TERMINAL 50212-8*00
2. MATES WITH : 53253-**10,53254-**10
3. MATERIAL : PBT , UL94V-0
4. MATERIAL NO.

51065-**0*

CIRCUIT COLOR
 1: BLACK
 5: GRAY
 6: GREEN
 7: BROWN

| | | | | | | | | |
|--|--|--|----------------------------|---------------------------|---|--|---------------------------|--|
| REVISED EC NO: J2006-1395 DRW: NABEI 2005/10/31 CHK: KYOYODA 2005/11/01 APP: NUKITA 2005/11/02 | GENERAL TOLERANCES (UNLESS SPECIFIED) | | DIMENSION STYLE MM ONLY | | SCALE 5:1 | DESIGN UNITS METRIC | THIRD ANGLE PROJECTION | |
| | 10 UNDER | ±0.2 | DRAWN BY S. AIHARA | DATE '89/09/21 | TITLE NEW 2.0 WIRE TO BOARD CONN RECEPTACLE HOUSING | | | |
| | 10 OVER 30 UNDER | ±0.25 | CHECKED BY M. FUKUSHIMA | DATE '90/01/18 | MOLEX INCORPORATED | | | |
| | 30 OVER | ±0.3 | APPROVED BY M. ENOMOTO | DATE '90/01/18 | DOCUMENT NO. SD-51065-005 | | | |
| | ANGULAR ±3 ° | DRAFT WHERE APPLICABLE MUST REMAIN WITHIN DIMENSIONS | | MATERIAL NO. SEE CHART | | SHEET NO. 1 OF 2 | | |
| | | SIZE A3 | | | | THIS DRAWING CONTAINS INFORMATION THAT IS PROPRIETARY TO MOLEX INCORPORATED AND SHOULD NOT BE USED WITHOUT WRITTEN PERMISSION | | |

10 9 8 7 6 5 4 3 2 1

F

F

E

E

D

D

C

C

B

B

A

A

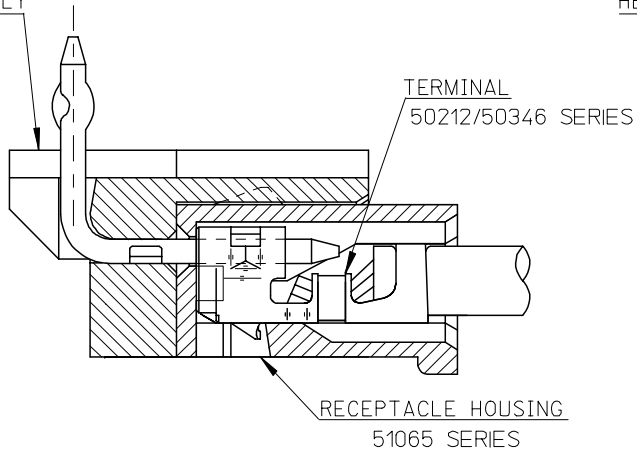
| | | | | | | | | |
|------|------|----|------------|------------|------------|------------|------------|----|
| 31.8 | 31.1 | 28 | 51065-1507 | 51065-1506 | 51065-1505 | 51065-1501 | 51065-1500 | 15 |
| 29.8 | 29.1 | 26 | 51065-1407 | 51065-1406 | 51065-1405 | 51065-1401 | 51065-1400 | 14 |
| 27.8 | 27.1 | 24 | 51065-1307 | | 51065-1305 | 51065-1301 | 51065-1300 | 13 |
| 25.8 | 25.1 | 22 | 51065-1207 | 51065-1206 | 51065-1205 | 51065-1201 | 51065-1200 | 12 |
| 23.8 | 23.1 | 20 | 51065-1107 | | 51065-1105 | 51065-1101 | 51065-1100 | 11 |
| 21.8 | 21.1 | 18 | 51065-1007 | 51065-1006 | 51065-1005 | 51065-1001 | 51065-1000 | 10 |
| 19.8 | 19.1 | 16 | 51065-0907 | 51065-0906 | 51065-0905 | 51065-0901 | 51065-0900 | 9 |
| 17.8 | 17.1 | 14 | 51065-0807 | 51065-0806 | 51065-0805 | 51065-0801 | 51065-0800 | 8 |
| 15.8 | 15.1 | 12 | 51065-0707 | | 51065-0705 | 51065-0701 | 51065-0700 | 7 |
| 13.8 | 13.1 | 10 | 51065-0607 | | 51065-0605 | 51065-0601 | 51065-0600 | 6 |
| 11.8 | 11.1 | 8 | 51065-0507 | | 51065-0505 | 51065-0501 | 51065-0500 | 5 |
| 9.8 | 9.1 | 6 | 51065-0407 | | 51065-0405 | 51065-0401 | 51065-0400 | 4 |
| 7.8 | 7.1 | 4 | 51065-0307 | | 51065-0305 | | 51065-0300 | 3 |
| 5.8 | 5.1 | 2 | 51065-0207 | | 51065-0205 | | 51065-0200 | 2 |
| C | B | A | BROWN | GREEN | GRAY | BLACK | NATURAL | 極数 |

| | | | | | | | | |
|--|---------------------------------------|--|----------------------------|---------------------------|-------------------|------------------------------|---|--|
| REVISED EC NO: J2006-1395 DRWN: NABE 2005/10/31 CHKDK: TOYODA 2005/11/01 APPR: NUKITA 2005/11/02 | GENERAL TOLERANCES (UNLESS SPECIFIED) | | DIMENSION STYLE MM ONLY | | SCALE 5:1 | DESIGN UNITS METRIC | THIRD ANGLE PROJECTION | |
| | 10 UNDER | ± 0.2 | DRAWN BY S. AIHARA | | DATE '89/09/21 | | TITLE NEW 2.0 WIRE TO BOARD CONN RECEPTACLE HOUSING | |
| | 10 OVER 30 UNDER | ± 0.25 | CHECKED BY M. FUKUSHIMA | | DATE '90/01/18 | | | |
| | 30 OVER | ± 0.3 | APPROVED BY M. ENOMOTO | | DATE '90/01/18 | | MOLEX INCORPORATED | |
| ANGULAR ±3 ° | | DRAFT WHERE APPLICABLE MUST REMAIN WITHIN DIMENSIONS | | MATERIAL NO. SEE CHART | | DOCUMENT NO. SD-51065-005 | SHEET NO. 2 OF 2 | |

10 9 8 7 6 5 4 3 2 1

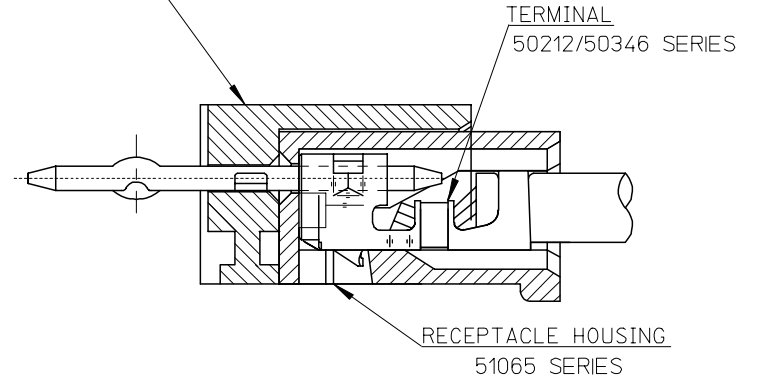
F

HEADER HOUSING ASSEMBLY
53254SERIES



51065シリーズ/53254シリーズ 嵌合状態図 参考
51065 SERIES/53254 SERIES MATED DRAWING (REF.)

HEADER HOUSING ASSEMBLY
53253SERIES



51065シリーズ/53253シリーズ 嵌合状態図 参考
51065 SERIES/53253 SERIES MATED DRAWING (REF.)

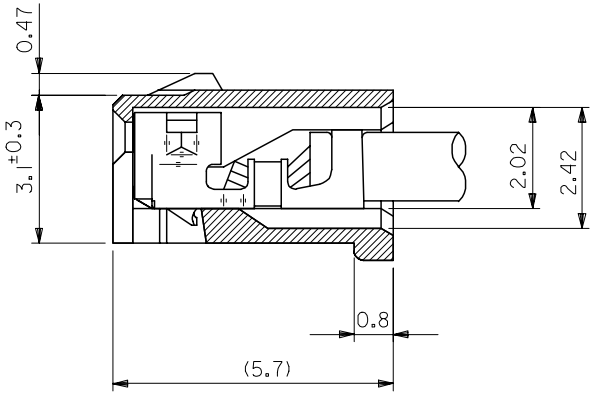
E

D

C

B

A



ターミナル装着状態図
TERMINAL ASS'Y DWG.

| | | | | | | |
|---|---------------------------------------|------------|---|--------------------|---|------------------------|
| RELEASED EC NO: J2008-2041 DRWN: AOYAGI 2007/11/21 CHKD: THARUYAMA 2007/11/22 APPR: NUKITA 2007/11/22 | GENERAL TOLERANCES (UNLESS SPECIFIED) | | DIMENSION STYLE MM ONLY | SCALE 10:1 | DESIGN UNITS METRIC | THIRD ANGLE PROJECTION |
| | 10 UNDER | ±0.2 | DRAWN BY Y. AOYAGI | DATE 2007/11/13 | TITLE NEW 2.0 W/B CONN. 51065/53253OR51065/53254 | |
| | 10 OVER 30 UNDER | ±0.25 | CHECKED BY N. UKITA | DATE 2007/11/13 | MOLEX INCORPORATED DOCUMENT NO. SD-51065-006 SHEET NO. 1 OF 1 | |
| | 30 OVER | ±0.3 | APPROVED BY N. UKITA | DATE 2007/11/13 | | |
| | ANGULAR | ±1 ° | MATERIAL NO. | | SEE TABLE | |
| DRAFT WHERE APPLICABLE MUST REMAIN WITHIN DIMENSIONS | | SIZE A3 | THIS DRAWING CONTAINS INFORMATION THAT IS PROPRIETARY TO MOLEX INCORPORATED AND SHOULD NOT BE USED WITHOUT WRITTEN PERMISSION | | | |

9

8

7

6

5

4

3

2