

PLEASE CHECK WWW.MOLEX.COM FOR LATEST PART INFORMATION

Part Number: [0022503145](#)
Status: **Active**
Overview: [kk](#)
Description: 2.54mm (.100") KK® IDT Double Cantilever Contact, 14 Circuits, Tin (Sn), Feed-Through, Friction Ramp and Polarizing Rib, Green ID Strip

Documents:

[3D Model](#) [Product Specification PSX-7690S \(PDF\)](#)
[Drawing \(PDF\)](#) [RoHS Certificate of Compliance \(PDF\)](#)

Agency Certification

UL E29179

General

Product Family IDT and Solder Connectors
 Series [7720](#)
 Comments Version H
 Crimp Quality Equipment Yes
 Overview [kk](#)
 Product Name KK®

Physical

Circuits (Loaded) 14
 Circuits (maximum) 14
 Color - Resin Natural
 Durability (mating cycles max) 5
 Flammability 94V-2
 Gender Female
 Glow-Wire Compliant No
 Lock to Mating Part None
 Material - Metal Brass
 Material - Plating Mating Tin
 Material - Plating Termination Tin
 Material - Resin Nylon
 Number of Rows 1
 Packaging Type Bag
 Panel Mount No
 Pitch - Mating Interface (in) 0.100 In
 Pitch - Mating Interface (mm) 2.54 mm
 Pitch - Term. Interface (in) 0.100 In
 Pitch - Term. Interface (mm) 2.54 mm
 Polarized to Mating Part Yes
 Stackable No
 Temperature Range - Operating 0°C to +50°C
 Termination Interface: Style IDT or Pierce
 Wire Size AWG 24 Stranded, 26 Solid, 26 Stranded Topcoat

Electrical

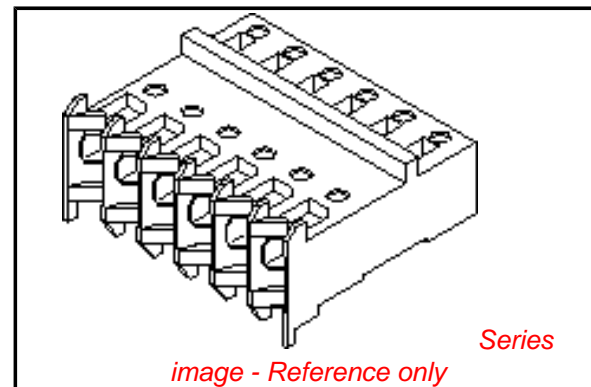
Current - Maximum per Contact 4A
 Voltage - Maximum 250V

Solder Process Data

Lead-free Process Capability Wave Capable (TH only)

Material Info

Old Part Number 7720SC14H



EU RoHS

ELV and RoHS Compliant
REACH SVHC
 Not Reviewed
Halogen-Free Status
Not Reviewed

China RoHS



Need more information on product environmental compliance?

Email productcompliance@molex.com
 For a multiple part number RoHS Certificate of Compliance, [click here](#)

Please visit the [Contact Us](#) section for any non-product compliance questions.

Search Parts in this Series

[7720Series](#)

Application Tooling | [FAQ](#)

Tooling specifications and manuals are found by selecting the products below. Crimp Height Specifications are then contained in the Application Tooling Specification document.

Global

| Description | Product # |
|----------------------|----------------------------|
| Insertion Tool for | 0638133504 |
| 2.54mm (.100") Pitch | |
| KK® IDT Crimp | |
| Terminals | |
| IDT - Semi-automatic | 0011200412 |
| - Bench-Top | |
| Terminator | |

Reference - Drawing Numbers

Packaging Specification

Product Specification

Sales Drawing

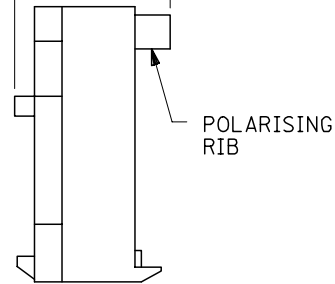
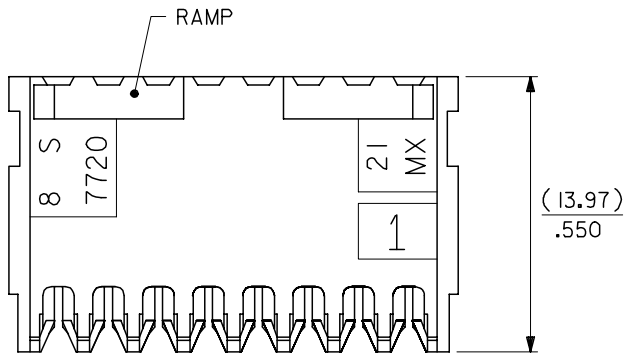
PK-7720-100

PSX-7690S

SDA-7720S-*N*

This document was generated on 05/18/2010

PLEASE CHECK WWW.MOLEX.COM FOR LATEST PART INFORMATION



BASE No. A-7720S- * N * - * VOID LOC' n.
 TERMINAL DESIGNATION
 No. OF CCTS.

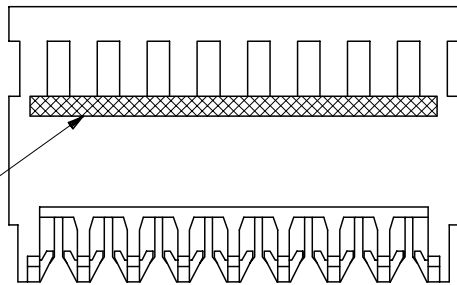
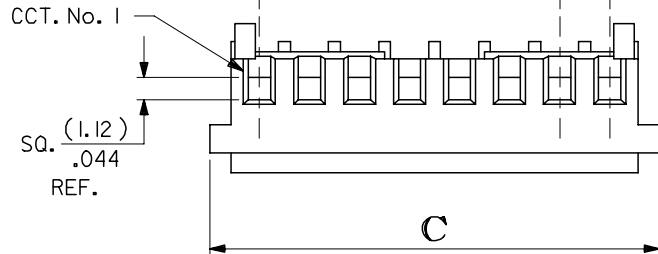
HOUSING CONFIGURATION

- WITHOUT BACKWALL { A. HSG, NO RAMP, NO POL. RIBS
 B. WITH RAMP
 C. WITH RAMP AND POL. RIB
- WITH BACKWALL { D. HSG, NO RAMP, NO POL. RIB
 E. WITH RAMP
 F. WITH RAMP AND POL. RIB

NOTES:

- MATERIAL: NYLON 6/6, 94V-2, NATURAL.
- THIS ASSY. IS FOR USE WITH (0.64)/.025 SQ. OR RD. PINS. INSERTION DEPTH (6.10-7.87)/.240-.310
- THIS ASSY. WILL ACCOMMODATE (1.42)/.056 MAX. INSULATION DIA.
- COLOURED STRIPE ON FULL LENGTH OF RIB DENOTES WIRE GAUGE (SEE CHART).
- VOIDS ARE AVAILABLE WITH PIN WINDOWS MOULDED CLOSED.
- ALL TERMINALS HAVE CAT-EARS CONFIGURATION EXCEPT WHEN GOLD PLATED.
- FOR STANDARD PARTS SEE SHEETS 2&3.
- FOR NON STANDARD PLATING OPTIONS SEE SHEET 4.

| NO OF CCTS | DIMn. A | DIMn. C |
|------------|-------------------|-------------------|
| 2 | (2.54) / .100 | (7.59) / .299 |
| 3 | (5.08) / .200 | (10.13) / .399 |
| 4 | (7.62) / .300 | (12.67) / .499 |
| 5 | (10.16) / .400 | (15.21) / .599 |
| 6 | (12.70) / .500 | (17.75) / .699 |
| 7 | (15.24) / .600 | (20.29) / .799 |
| 8 | (17.78) / .700 | (22.83) / .899 |
| 9 | (20.32) / .800 | (25.37) / .999 |
| 10 | (22.86) / .900 | (27.91) / 1.099 |
| 11 | (25.40) / 1.000 | (30.45) / 1.199 |
| 12 | (27.94) / 1.100 | (32.99) / 1.299 |
| 13 | (30.48) / 1.200 | (35.53) / 1.399 |
| 14 | (33.02) / 1.300 | (38.07) / 1.499 |
| 15 | (35.56) / 1.400 | (40.61) / 1.599 |
| 16 | (38.10) / 1.500 | (43.15) / 1.699 |
| 17 | (40.64) / 1.600 | (45.69) / 1.799 |
| 18 | (43.18) / 1.700 | (48.23) / 1.899 |
| 19 | (45.72) / 1.800 | (50.77) / 1.999 |
| 20 | (48.26) / 1.900 | (53.31) / 2.099 |
| 21 | (50.80) / 2.000 | (55.85) / 2.199 |
| 22 | (53.34) / 2.100 | (58.39) / 2.299 |
| 23 | (55.88) / 2.200 | (60.93) / 2.399 |
| 24 | (58.42) / 2.300 | (63.47) / 2.499 |
| 25 | (60.96) / 2.400 | (66.01) / 2.599 |
| 26 | (63.50) / 2.500 | (68.55) / 2.699 |
| 27 | (66.04) / 2.600 | (71.09) / 2.799 |
| 28 | (68.58) / 2.700 | (73.63) / 2.899 |



| REVISION UPDATE EC NO: E2007-0125 DRWN: WASZKI, EMI CZ 2006/10/10 CHKD: D. MORIARTY 2006/10/11 APPR: DENNEHY 2006/10/11 | QUALITY SYMBOLS | GENERAL TOLERANCES (UNLESS SPECIFIED) | DIMENSION STYLE | SCALE | DESIGN UNITS | THIRD ANGLE PROJECTION | | | | | | | | | | | | | | | |
|---|---|---|--|---|---------------------|------------------------|-------|-------|----------|-------|--------|----------|--------|--------|---------|--------|-------|-------|-----|--------|--|
| | $\nabla = 0$ $\triangle = 0$ | <table border="1"> <thead> <tr> <th></th> <th>mm</th> <th>INCH</th> </tr> </thead> <tbody> <tr> <td>4 PLACES</td> <td>± ---</td> <td>± ---</td> </tr> <tr> <td>3 PLACES</td> <td>± ---</td> <td>± .005</td> </tr> <tr> <td>2 PLACES</td> <td>± 0.13</td> <td>± .010</td> </tr> <tr> <td>1 PLACE</td> <td>± 0.25</td> <td>± ---</td> </tr> </tbody> </table> | | mm | INCH | 4 PLACES | ± --- | ± --- | 3 PLACES | ± --- | ± .005 | 2 PLACES | ± 0.13 | ± .010 | 1 PLACE | ± 0.25 | ± --- | MM/IN | 4:1 | METRIC | |
| | | mm | INCH | | | | | | | | | | | | | | | | | | |
| | 4 PLACES | ± --- | ± --- | | | | | | | | | | | | | | | | | | |
| 3 PLACES | ± --- | ± .005 | | | | | | | | | | | | | | | | | | | |
| 2 PLACES | ± 0.13 | ± .010 | | | | | | | | | | | | | | | | | | | |
| 1 PLACE | ± 0.25 | ± --- | | | | | | | | | | | | | | | | | | | |
| DRAFT WHERE APPLICABLE MUST REMAIN WITHIN DIMENSIONS | DRAWN BY: GCH CHECKED BY: D. MORIARTY APPROVED BY: J. DENNEHY MATERIAL NO. | DATE DATE DATE | TITLE HOUSING I.D. CONNECTOR (2.54)/.100 CENTRES NON\$ | MOLEX INCORPORATED | SHEET NO. 1 OF 4 | | | | | | | | | | | | | | | | |
| SIZE A3 | SEE CHART | | DOCUMENT NO. SDA-7720S-*N* | THIS DRAWING CONTAINS INFORMATION THAT IS PROPRIETARY TO MOLEX INCORPORATED AND SHOULD NOT BE USED WITHOUT WRITTEN PERMISSION | | | | | | | | | | | | | | | | | |

| PART NO. | ENG. NO. | CCTS. | TERMINAL | I.D. STRIPE | PLTG. |
|------------|--------------|-------|---------------|-------------|--------------------------------------|
| 22-50-3025 | A-7720S-C 2H | 2 | 40125-H(P918) | GREEN | HOT TIN DIP (1-3µM)/000040-000120 |
| ↑ 3035 | ↑ C 3H | 3 | ↑ | ↑ | |
| 3045 | C 4H | 4 | | | |
| 3055 | C 5H | 5 | | | |
| 3065 | C 6H | 6 | | | |
| 3075 | C 7H | 7 | | | |
| 3085 | C 8H | 8 | | | |
| 3095 | C 9H | 9 | | | |
| 3105 | C 10H | 10 | | | |
| 3115 | C 11H | 11 | | | |
| 3125 | C 12H | 12 | | | |
| 3135 | C 13H | 13 | | | |
| 3145 | C 14H | 14 | | | |
| 3155 | C 15H | 15 | | | |
| 3165 | C 16H | 16 | | | |
| 3175 | C 17H | 17 | | | |
| 3185 | C 18H | 18 | | | |
| 3195 | C 19H | 19 | | | |
| 3205 | C 20H | 20 | | | |
| 3215 | C 21H | 21 | | | |
| 3225 | C 22H | 22 | | | |
| 3235 | C 23H | 23 | | | |
| 3245 | C 24H | 24 | | | |
| 3255 | C 25H | 25 | | | |
| 3265 | C 26H | 26 | | | |
| ↓ 3275 | ↓ C 27H | 27 | ↓ | ↓ | |
| 22-50-3285 | A-7720S-C28H | 28 | 40125-H(P918) | GREEN | |

NOTE:
1. 18 - 28 CIRCUITS ARE NON-STANDARD.

| | | | | | | | |
|---|-----------------|--|---|---|------------------------|------------------------|---|
| CORRECT PLATING EC NO: E2007-0125 DRWN: WASZKI EWI (CZ 2006/10/10) CHKD: MORIARTY 2006/10/11 APPR: DENNEHY 2006/10/11 | QUALITY SYMBOLS | GENERAL TOLERANCES (UNLESS SPECIFIED) | DIMENSION STYLE MM ONLY | SCALE --- | DESIGN UNITS METRIC | THIRD ANGLE PROJECTION | |
| | ▽=0 ▽=0 | 4 PLACES ±--- 3 PLACES ±--- 2 PLACES ±--- 1 PLACE ±--- ANGULAR ±---° | mm INCH ±--- ±--- ±--- ±--- ±--- ±--- ±--- ±--- | DRAWN BY MCC CHECKED BY D. MORIARTY APPROVED BY J. DENNEHY | DATE | TITLE | INSULATION DISPLACEMENT CONNECTOR (2.54)/.100 CENTRES |
| | | DRAFT WHERE APPLICABLE MUST REMAIN WITHIN DIMENSIONS | SEE CHART | MATERIAL NO. | DOCUMENT NO. | SHEET NO. | MOLEX INCORPORATED |
| | | | | SDA-7720S-*N* | 2 OF 4 | | |