

PLEASE CHECK WWW.MOLEX.COM FOR LATEST PART INFORMATION

Part Number: [0919150002](#)
Status: **Active**
Description: 2.54mm (.100") Pitch SIM Card Connector, Lead Free

Documents:

[3D Model](#) [Product Specification PS-91915-001 \(PDF\)](#)
[Drawing \(PDF\)](#) [RoHS Certificate of Compliance \(PDF\)](#)

General

Product Family Memory Card Sockets
 Series [91915](#)
 Button Type N/A
 Component Type I/O Header (Card)
 Product Name SIM
 Type N/A

Physical

Card Detection Switch Yes
 Circuits (Loaded) 6
 Color - Resin Black
 Durability (mating cycles max) 10,000
 Ejector Button Side No Ejector Button Present
 Entry Angle Vertical
 Keying to Mating Part Yes
 Material - Metal Phosphor Bronze
 Material - Plating Mating Gold
 Material - Plating Termination Tin
 Material - Resin High Temperature Thermoplastic
 PCB Mounting Side Reverse
 PCB Retention None
 Packaging Type Embossed Tape on Reel
 Pitch - Mating Interface (in) 0.100 In
 Pitch - Mating Interface (mm) 2.54 mm
 Plating min: Mating (µin) 4
 Plating min: Mating (µm) 0.1
 Plating min: Termination (µin) 120
 Plating min: Termination (µm) 3
 Ports 8
 Temperature Range - Operating -40°C to +85°C
 Termination Interface: Style Surface Mount

Electrical

Current - Maximum per Contact 0.5A
 Voltage - Maximum 15V

Solder Process Data

Duration at Max. Process Temperature (seconds) 5
 Lead-free Process Capability Reflow Capable (SMT only)
 Max. Cycles at Max. Process Temperature 2
 Process Temperature max. C 240

Material Info

Reference - Drawing Numbers

Product Specification PS-91915-001
 Sales Drawing SD-91915-002, SD-91915-003

EU RoHS

**ELV and RoHS
 Compliant**
**REACH SVHC
 Contains SVHC: No**
**Halogen-Free
 Status**

China RoHS



Not Reviewed

**Need more information on product
 environmental compliance?**

Email productcompliance@molex.com
 For a multiple part number RoHS Certificate of
 Compliance, [click here](#)

Please visit the [Contact Us](#) section for any
 non-product compliance questions.

Search Parts in this Series

[91915Series](#)

This document was generated on 04/13/2010

PLEASE CHECK WWW.MOLEX.COM FOR LATEST PART INFORMATION

10 9 8 7 6 5 4 3 2 1

F

E

D

C

B

A

F

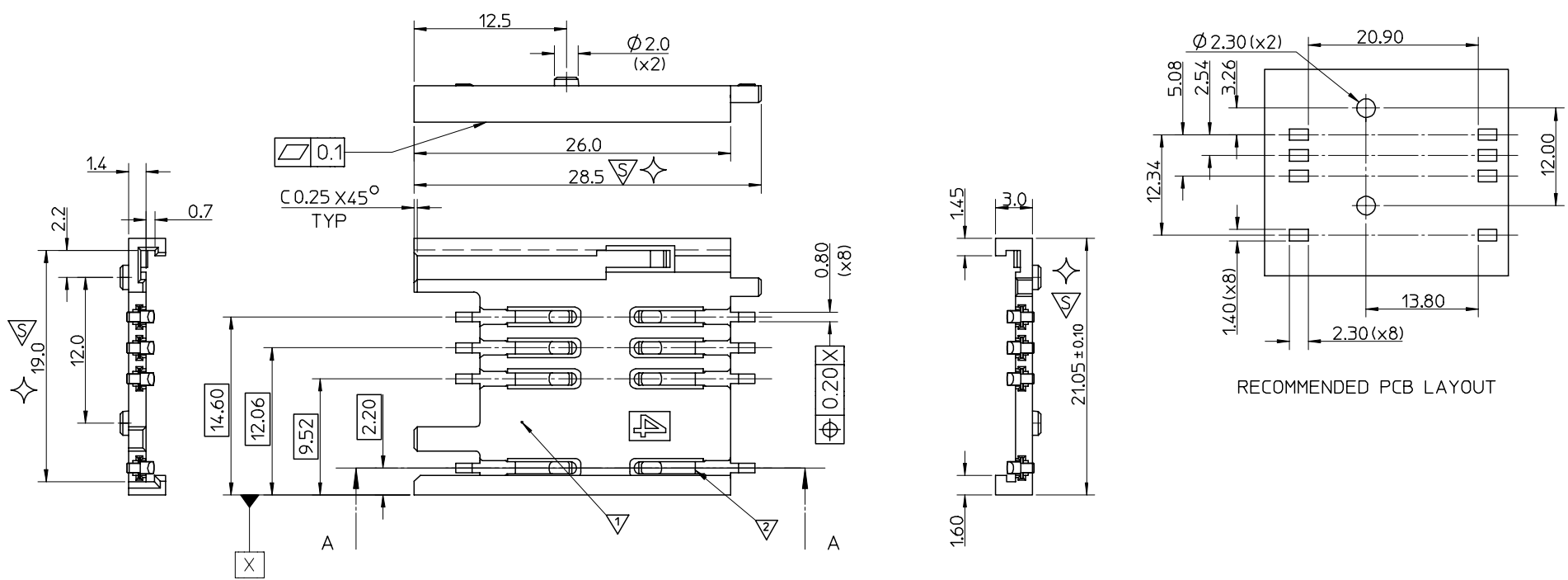
E

D

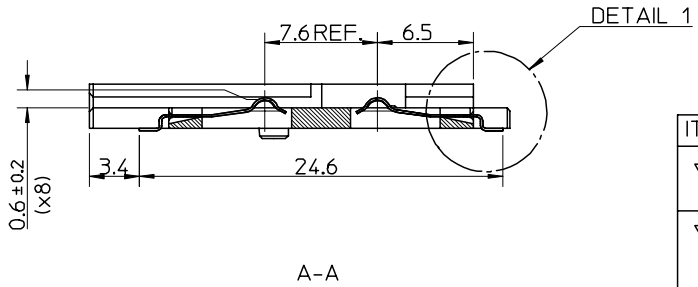
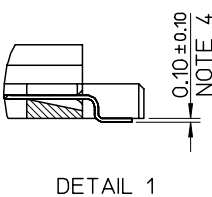
C

B

A



RECOMMENDED PCB LAYOUT



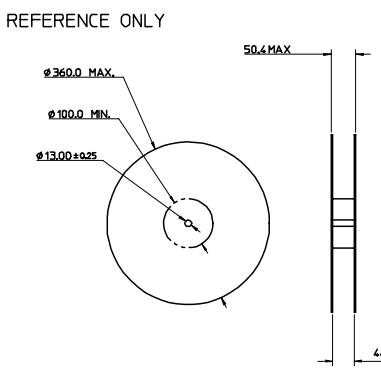
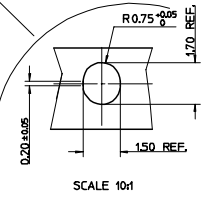
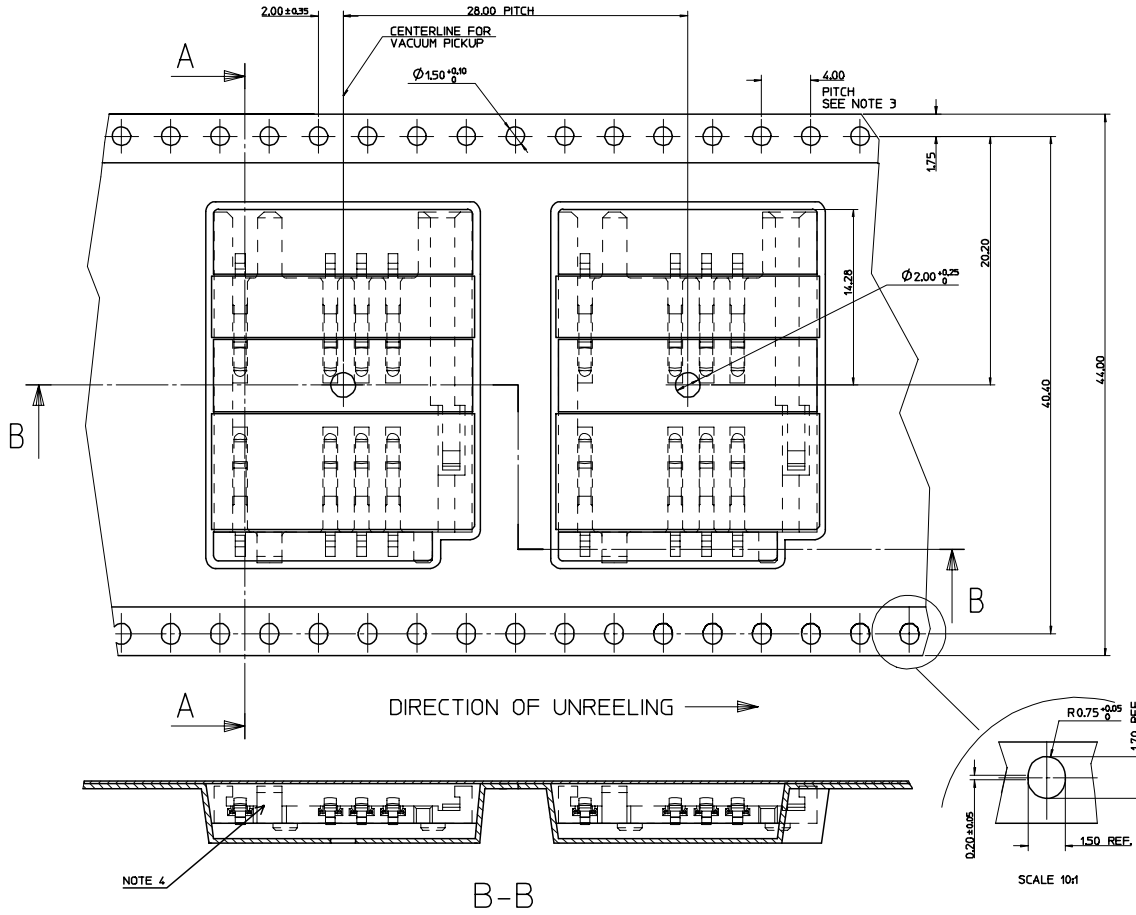
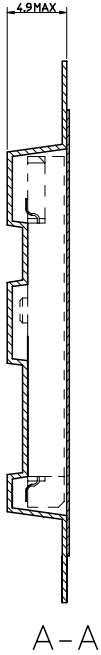
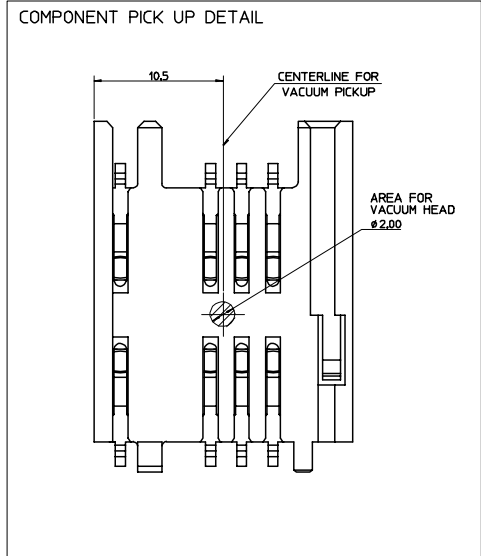
ITEM	COMPONENT	QTY	MATERIAL
▽	HOUSING	1	LCP E130i UL-94 V-0, COLOUR BLACK RoHS & LEAD FREE COMPLIANT
▽	TERMINAL	8	0.15 PHOSPHOR BRONZE Au FLASH OVER Pd/Ni Sn ON SMT TAILS

- NOTES:
1. PACKAGING: PARTS TO BE PACKAGED IN TAPE & REEL, SEE DRAWING SD-91915-003.
 2. SEE PRODUCT SPECIFICATION PS-91915-001.
 3. ✦ THIS IS A CUSTOMER SPECIFIC SYMBOL.
 4. SOLDER TAILS TO LIE WITHIN 0.12mm OF EACH OTHER.

ORIGINAL RELEASE EC NO: E2006-1110 DRWN:DCARTON 2007/02/14 CHKD: 2007/02/15 APPR:EFOLAN 2007/02/23	QUALITY SYMBOLS ▽ - 0 ▽ - 0 ▽ = 3	GENERAL TOLERANCES (UNLESS SPECIFIED)		SCALE 2:1	DESIGN UNITS METRIC	THIRD ANGLE PROJECTION	REVISE ON CAD ONLY	
				DIMENSION STYLE MM ONLY		TITLE 2.54 PITCH SIM CONNECTOR		
				DRAWN BY DMAHER		DATE 2006/11/28		MATERIAL NO. 919150002
				CHECKED BY FDUGGAN		DATE 2006/11/28		
		APPROVED BY EFOLAN		DATE 2006/11/28		DOCUMENT NO. SD-91915-002	SHEET NO. 1 OF 1	
		DRAFT WHERE APPLICABLE MUST REMAIN WITHIN DIMENSIONS		THIS DRAWING CONTAINS INFORMATION THAT IS PROPRIETARY TO MOLEX INCORPORATED AND SHOULD NOT BE USED WITHOUT WRITTEN PERMISSION				

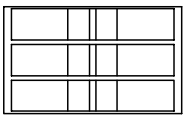
9 8 7 6 5 4 3 2 1

A3



REEL DIMENSIONS
NOT TO SCALE

15001 PIECES ON A REEL
(3) REELS / CARDBOARD BOX
(15001) PIECES / CARDBOARD BOX - SUBJECT TO CHANGE



- NOTES:
- MATERIAL:
CARRIER TAPE: VOLUME CONDUCTIVE POLYSTYRENE, 0.40 REF THICK, BLACK
COVER TAPE: COLD SEAL POLYESTER, 0.06 REF THICK, TRANSPARENT
 - PEEL FORCE OF THE COVER TAPE IS 0.1N TO 1.0N
AT MAXIMUM PEEL SPEED OF 300mm/min. ±10%
 - PITCH TOLERANCE OVER ANY 10 PITCHES ±0.2
 - TAPE & REEL PACKAGING FOR PART NUMBERS 919150001 & 919150002.

TO CUSTOMER ASSEMBLY MACHINE →

ORIGINAL RELEASE EC NO: E2006-110 DRAWING/CARTON 2007/02/14 CHKD: APPR:	QUALITY SYMBOLS	GENERAL TOLERANCES (UNLESS SPECIFIED)	SCALE 4:1	DESIGN UNITS METRIC	THIRD ANGLE PROJECTION	REVISE ON CAD ONLY																		
	DESCRIPTION MOLEX REEL	<table border="1"> <tr> <th></th> <th>mm</th> <th>INCH</th> </tr> <tr> <td>4 PLACES</td> <td>±---</td> <td>±---</td> </tr> <tr> <td>3 PLACES</td> <td>±---</td> <td>±---</td> </tr> <tr> <td>2 PLACES</td> <td>±0.10</td> <td>±---</td> </tr> <tr> <td>1 PLACE</td> <td>±0.2</td> <td>±---</td> </tr> <tr> <td colspan="2">ANGULAR</td> <td>± 2°</td> </tr> </table>		mm	INCH	4 PLACES	±---	±---	3 PLACES	±---	±---	2 PLACES	±0.10	±---	1 PLACE	±0.2	±---	ANGULAR		± 2°	DIMENSION STYLE MM ONLY	TITLE	BLISTER PACKAGING SIM CONNECTOR	
			mm	INCH																				
		4 PLACES	±---	±---																				
3 PLACES	±---	±---																						
2 PLACES	±0.10	±---																						
1 PLACE	±0.2	±---																						
ANGULAR		± 2°																						
DRAFT WHERE APPLICABLE MUST REMAIN WITHIN DIMENSIONS	DRAWN BY: DMAHER DATE: 2006/11/28 CHECKED BY: FDUGGAN DATE: 2006/11/28 APPROVED BY: EFOLAN DATE: 2006/11/28	MATERIAL NO. NOTE 4 DOCUMENT NO. SD-91915-003	SHEET NO. 1 OF 1	MOLEX INCORPORATED																				
THIS DRAWING CONTAINS INFORMATION THAT IS PROPRIETARY TO MOLEX INCORPORATED AND SHOULD NOT BE USED WITHOUT WRITTEN PERMISSION						A1																		