

PLEASE CHECK WWW.MOLEX.COM FOR LATEST PART INFORMATION

Part Number: [0914070002](#)
Status: **Active**
Description: 2.54mm (.100") Pitch SIM Card Holder, 6 Circuits, SMT, 0.50µm (20µ") Gold (Au) Plating, with 6 Solder Tabs, Housing Height 3.40mm (.134"), Lead Free

Documents:

[Drawing \(PDF\)](#) [RoHS Certificate of Compliance \(PDF\)](#)
[Product Specification PS-91407-004 \(PDF\)](#)

General

Product Family	Memory Card Sockets
Series	91407
Button Type	N/A
Component Type	Card Holder (Host)
Product Name	SIM
Type	N/A

Physical

Card Detection Switch	N/A
Circuits (Loaded)	6
Circuits (maximum)	6
Color - Resin	Black
Durability (mating cycles max)	5,000
Ejector Button Side	No Ejector Button Present
Entry Angle	Vertical (Top Entry)
Keying to Mating Part	Yes
Material - Metal	Phosphor Bronze
Material - Plating Mating	Gold
Material - Plating Termination	Palladium
Material - Resin	High Temperature Thermoplastic
PCB Locator	No
PCB Mounting Side	Normal
PCB Retention	Yes
Packaging Type	Tray
Pitch - Mating Interface (in)	0.100 In
Pitch - Mating Interface (mm)	2.54 mm
Pitch - Term. Interface (in)	0.100 In
Pitch - Term. Interface (mm)	2.54 mm
Plating min: Mating (µin)	20
Plating min: Mating (µm)	0.50
Plating min: Termination (µin)	40
Plating min: Termination (µm)	1.00
Ports	1
Temperature Range - Operating	-30°C to +85°C
Termination Interface: Style	Surface Mount

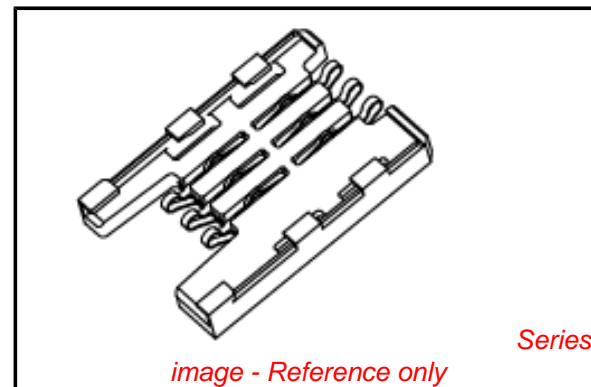
Electrical

Current - Maximum per Contact	0.5A
Shielded	No
Voltage - Maximum	50V DC

Material Info

Reference - Drawing Numbers

Product Specification	PS-91407-004, RPS-91407-004
Sales Drawing	SD-91407-002



EU RoHS **China RoHS**

Compliance Status

Not Reviewed

REACH SVHC

Not Reviewed

Halogen-Free

Status

Not Reviewed

Need more information on product environmental compliance?

Email productcompliance@molex.com
 For a multiple part number RoHS Certificate of Compliance, [click here](#)

Please visit the [Contact Us](#) section for any non-product compliance questions.

Search Parts in this Series

[91407Series](#)

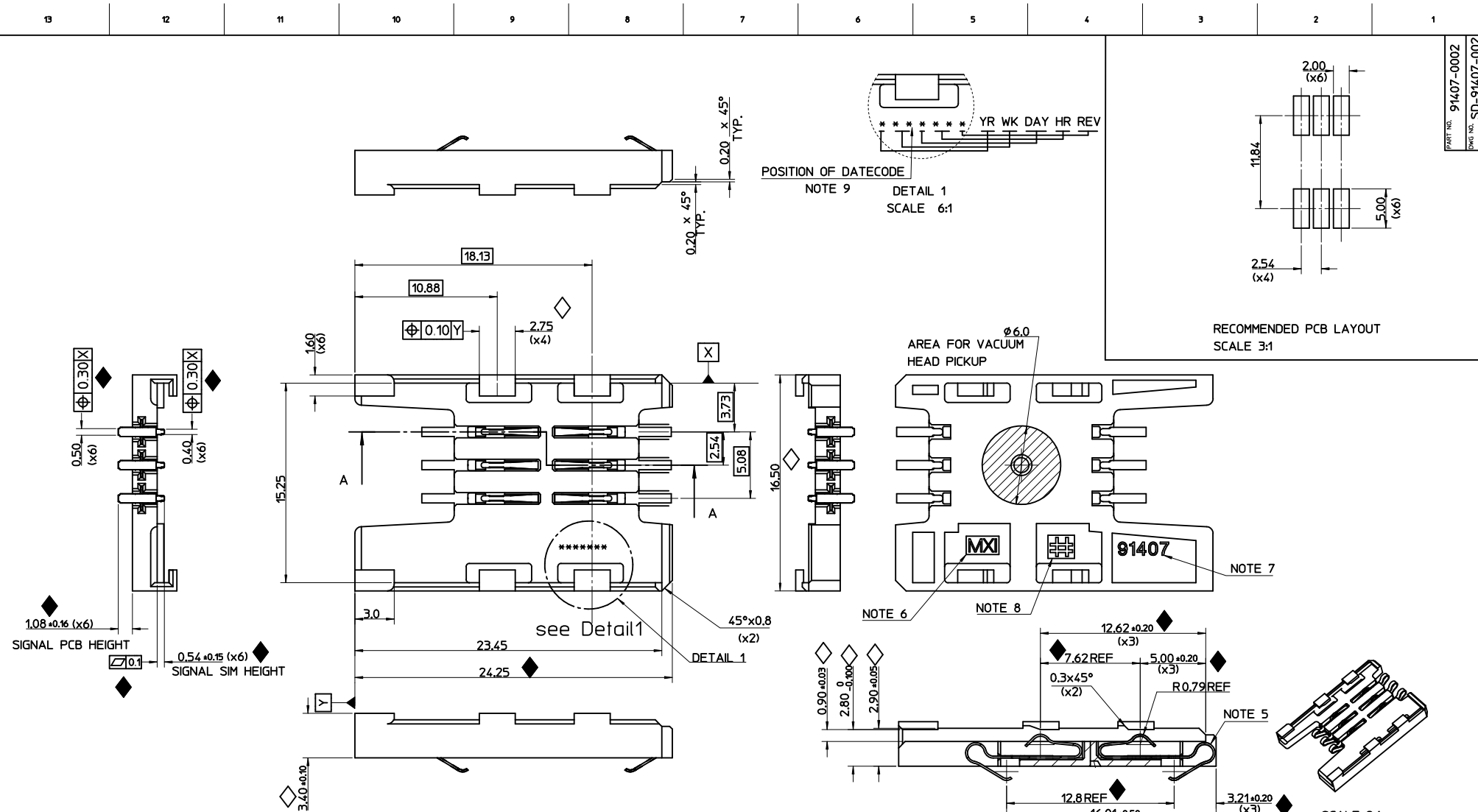
Mates With

[Standard SIM Card](#)

This document was generated on 05/27/2010

PLEASE CHECK WWW.MOLEX.COM FOR LATEST PART INFORMATION

PART NO. 91407-0002
 DWG NO. SD-91407-0002



- NOTES:
1. MATERIAL: HOUSING - LCP 30% GLASS FILL, UL-94 V-0, COLOUR BLACK
 SIGNAL TERMINAL - PHOSPHOR BRONZE, 0.15mm REF. THICK
 2. PLATING: SIGNAL TERMINAL SIM SIDE - 0.50um Au OVER 1.0um PdNi
 SIGNAL TERMINAL PCB SIDE - 0.38um Au
 UNDERPLATING-127um Ni OVERALL
 3. PACKAGING : TRAY, SEE PACKAGING SPECIFICATION PK-91407-006
 4. SEE PRODUCT SPECIFICATION, PS-91407-004
 5. TERMINAL MUST NOT PROTRUDE PAST BACK WALL
 6. MOLEX LOGO 'MXI' TO BE 1.0 HIGH &
 RECESSED 0.05max BELOW THE SURFACE OF THE HOUSING.
 7. PART I.D. TO BE 1.0 HIGH & RECESSED 0.1 BELOW SURFACE.
 8. MOULD CAVITY NUMBER '#' TO BE 3.0 HIGH & RECESSED 0.05max BELOW SURFACE
 9. TEXT TO BE LAZER MARKED WITH 1.6MM HIGH TEXT

ITEM	COMPONENT	QTY
1	HOUSING	1
2	SIGNAL TERMINAL	6

INCREASED GOLD PLATING EC NO. E2002-1102 DRWN: DBYRNES 2002/07/03 CHK: CHIK APPR:	QUALITY SYMBOLS ◆ = 12 ◇ = 6	GENERAL TOLERANCES: (UNLESS SPECIFIED)		SCALE 5:1	DESIGN UNITS <input checked="" type="checkbox"/> MM <input type="checkbox"/> INCH	DIMENSIONS: <input type="checkbox"/> MM <input type="checkbox"/> INCH <input checked="" type="checkbox"/> MM ONLY	SHT REV
		4 PLACES ± --- ± --- 3 PLACES ± --- ± --- 2 PLACES ± 0.10 ± --- 1 PLACE ± 0.2 ± --- ANGULAR: ± 2°		DRAWN BY & DATE dbyrnnes 2002/08/02	CHECKED BY & DATE ADOYLE 2002/08/13	APPROVED BY & DATE MWILHITE 2002/08/02	TITLE: 2.54mm SIM Conn Prsr Mnt 6Ckt
DRAFT WHERE APPLICABLE MUST REMAIN WITHIN DIMENSIONS		CAD FILENAME		MATERIAL NO. 91407-0002	DRAWING NO. SD-91407-002	SHEET NO. 1 of 1	SIZE C