



TAI-SAW TECHNOLOGY CO., LTD.

No. 3, Industrial 2nd Rd., Ping-Chen Industrial District,
Taoyuan, 324, Taiwan, R.O.C.

TEL: 886-3-4690038 FAX: 886-3-4697532

E-mail: tstsales@mail.taisaw.com Web: www.taisaw.com

Approval Sheet For Product Specification

Issued Date:

Product Name: SAW Filter 1220MHz SMD 3.0×3.0 mm

TST Parts No.:TA0292A

Customer Parts No.:_____

Company: _____
Division: _____
Approved by : _____
Date: _____

Checked by: _____ Elvis Chiu

Approval by: _____ Francis Chen

Date: _____ 2003/08/06



TAI-SAW TECHNOLOGY CO., LTD.

No. 3, Industrial 2nd Rd., Ping-Chen Industrial District,
Taoyuan, 324, Taiwan, R.O.C.

TEL: 886-3-4690038 FAX: 886-3-4697532

E-mail: tstsales@mail.taisaw.com Web: www.taisaw.com

SAW Filter 1220 MHz

MODEL NO.: TA0292A

REV. NO.:2

A. MAXIMUM RATING:

1. Input Power Level: 0 dB_m
2. DC voltage: 3 V
3. Operating Temperature: -30°C to +85°C
4. Storage Temperature: -40°C to +85°C

RoHS Compliant
Lead free
Lead-free soldering

B. CHARACTERISTICS:

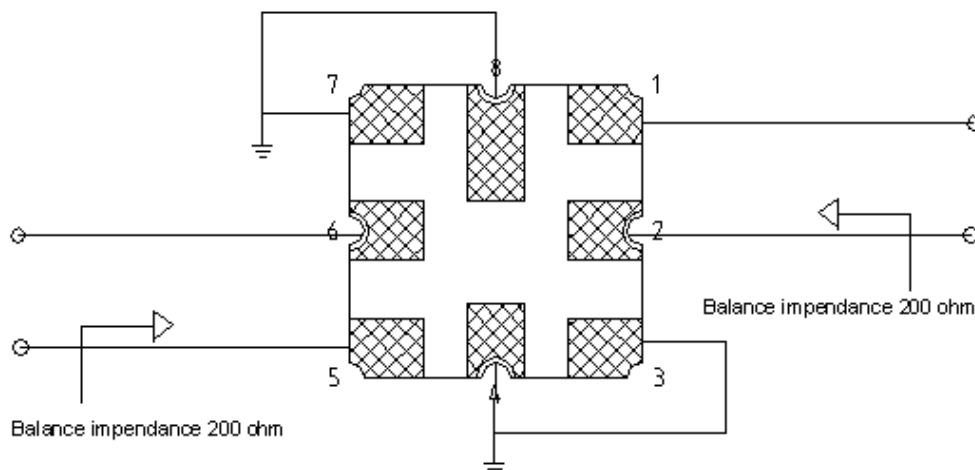
Balanced to balanced operation

Terminating source impedance: $Z_S=200\Omega$

Terminating load impedance: $Z_L=200\Omega$

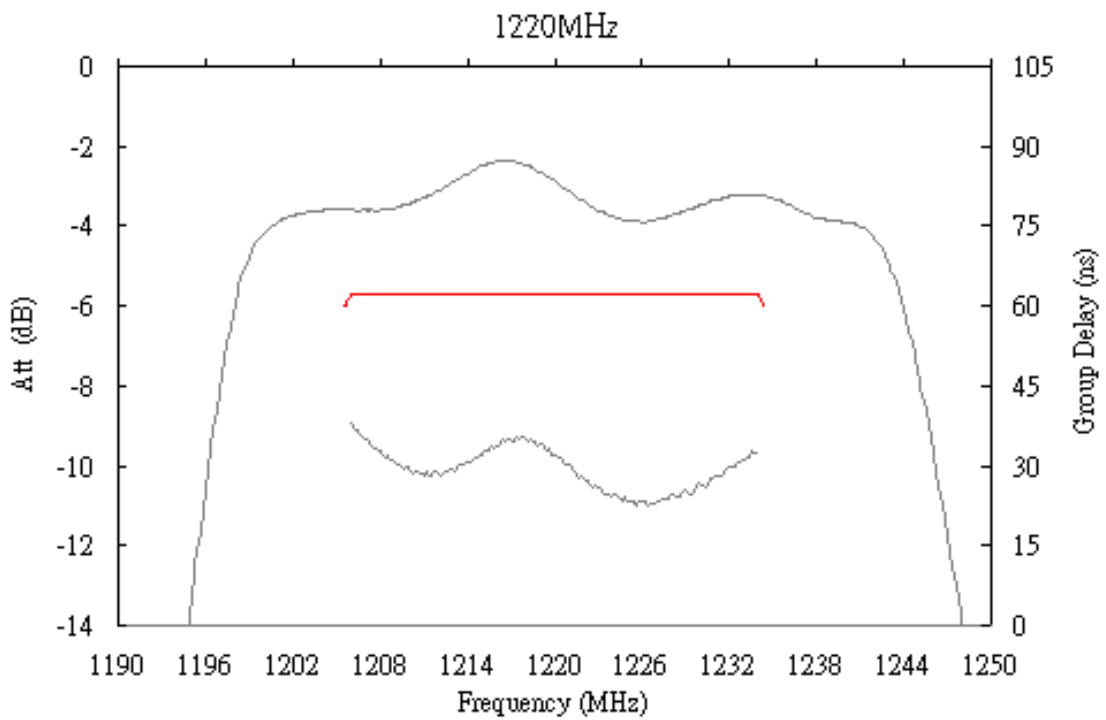
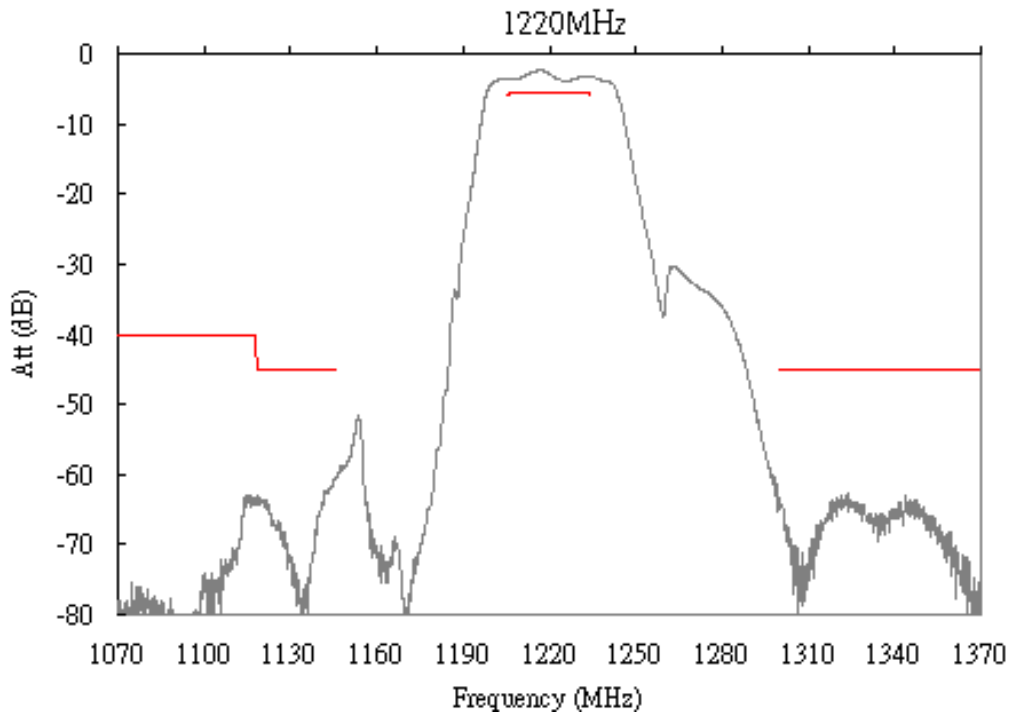
Item	Min.	Typ.	Max.
Center frequency Fc MHz	-	1220	-
Insertion loss 1206 ~ 1234 MHz IL (dB)	-	4.0	5.7
Amplitude ripple 1206 ~ 1234 MHz (dB)	-	1.9	3.5
Attenuation (Reference level from 0 dB)			
300 ~ 1118 MHz (dB)	40	59	-
1118 ~ 1146 MHz (dB)	45	60	-
1300 ~ 2000 MHz (dB)	45	59	-
Group delay ripple (p-p)	(ns)	15	-

C. MEASUREMENT CIRCUIT:

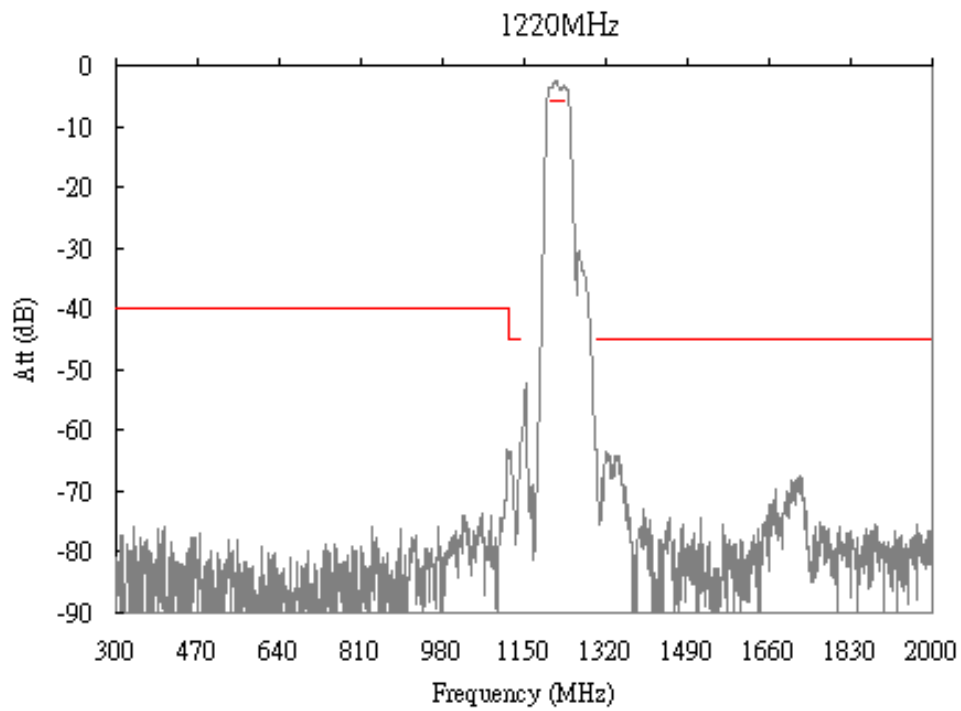


D. Transfer Function :

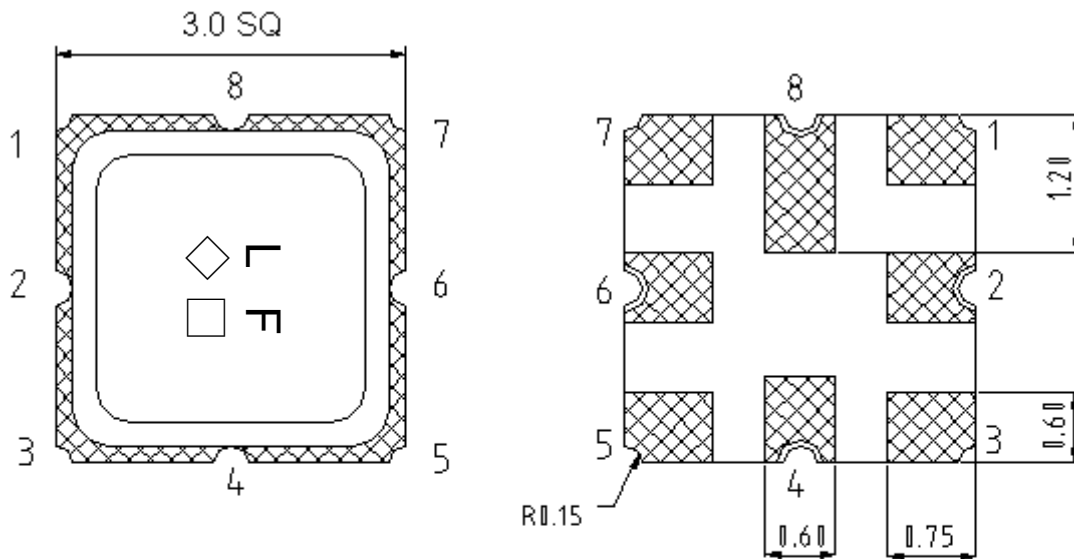
Narrowband



Wideband



E.OUTLINE DRAWING:



Pin 1,2 : Balanced Input

Pin 5,6 : Balanced Output

P3,4,7,8 : Ground

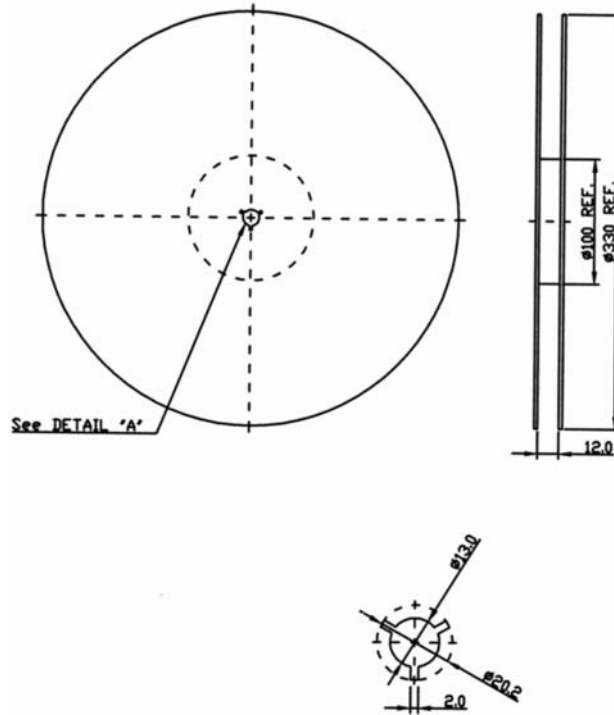
◇ : Year Code

□ : Date Code

Unit : mm

F. PACKING:

1. REEL DIMENSION



2. TAPE DIMENSION

