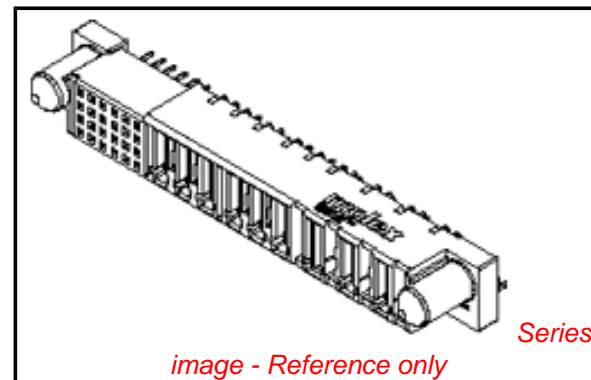


**PLEASE CHECK WWW.MOLEX.COM FOR LATEST PART INFORMATION**

**Part Number:** [0780743100](#)  
**Status:** **Active**  
**Overview:** [extreme\\_powerplus\\_ssi](#)  
**Description:** 7.62mm (.300"), 6.35mm (.250"), 5.08mm (.200") Pitch Power 2.54mm (.100") Pitch Signal, EXTreme PowerPlus™ Pa-S Receptacle, Through Hole, Vertical, with Beveled Metal Pins, Power Alpha 9, Signal 24, 33 Circuits, Leadfree

**Documents:**

[3D Model](#) [RoHS Certificate of Compliance \(PDF\)](#)  
[Drawing \(PDF\)](#)



**Agency Certification**

UL E29179

**General**

Product Family PCB Receptacles  
 Series [78074](#)  
 Application Board-to-Board  
 Comments Recessed Power Circuit - All except A7  
 Overview [extreme\\_powerplus\\_ssi](#)  
 Product Name EXTreme PowerPlus™

**Physical**

Circuits (Loaded) 33  
 Circuits (maximum) 33  
 Circuits Detail Power Alpha 9, Signal 24  
 Color - Resin Black  
 Durability (mating cycles max) 100  
 Flammability 94V-0  
 Glow-Wire Compliant No  
 Material - Metal Phosphor Bronze  
 Material - Plating Mating Gold  
 Material - Plating Termination Tin  
 Material - Resin High Temperature Thermoplastic  
 Number of Rows 4  
 Orientation Vertical  
 PC Tail Length (in) 0.135 In  
 PC Tail Length (mm) 3.43 mm  
 PCB Locator Yes  
 PCB Retention Yes  
 PCB Thickness Recommended (in) 0.093 In  
 PCB Thickness Recommended (mm) 2.36 mm  
 Packaging Type Tray  
 Pitch - Mating Interface (in) 0.100 In, 0.200 In, 0.250 In, 0.300 In  
 Pitch - Mating Interface (mm) 2.54 mm, 5.08 mm, 6.35 mm, 7.62 mm  
 Pitch - Term. Interface (in) 0.100 In, 0.150 In, 0.200 In  
 Pitch - Term. Interface (mm) 2.54 mm, 3.81 mm, 5.08 mm  
 Plating min: Mating (µin) 30.4  
 Plating min: Mating (µm) 0.76  
 Plating min: Termination (µin) 101.6  
 Plating min: Termination (µm) 2.54  
 Polarized to Mating Part Yes  
 Polarized to PCB Yes  
 Stackable No  
 Surface Mount Compatible (SMC) Yes  
 Temperature Range - Operating -20°C to +105°C

**EU RoHS**

**ELV and RoHS Compliant**  
**REACH SVHC Contains SVHC: No**  
**Halogen-Free Status**  
**Halogen-Free**

**China RoHS**



**Need more information on product environmental compliance?**

Email [productcompliance@molex.com](mailto:productcompliance@molex.com)  
 For a multiple part number RoHS Certificate of Compliance, [click here](#)

Please visit the [Contact Us](#) section for any non-product compliance questions.

**Search Parts in this Series**  
[78074Series](#)

Termination Interface: Style Through Hole, Through Hole - Compliant Pin

### **Electrical**

Current - Maximum per Contact 2.5A, 30A, 50A  
Voltage - Maximum 250V DC

### **Solder Process Data**

Duration at Max. Process Temperature (seconds) 10  
Lead-free Process Capability Wave Capable (TH only)  
Max. Cycles at Max. Process Temperature 3  
Process Temperature max. C 260

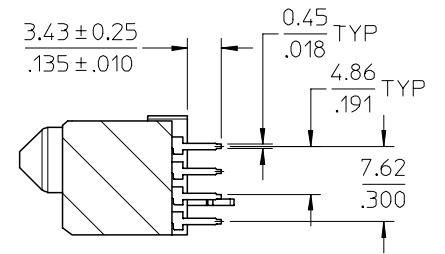
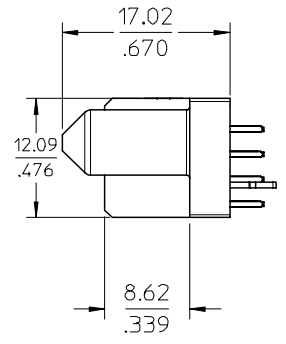
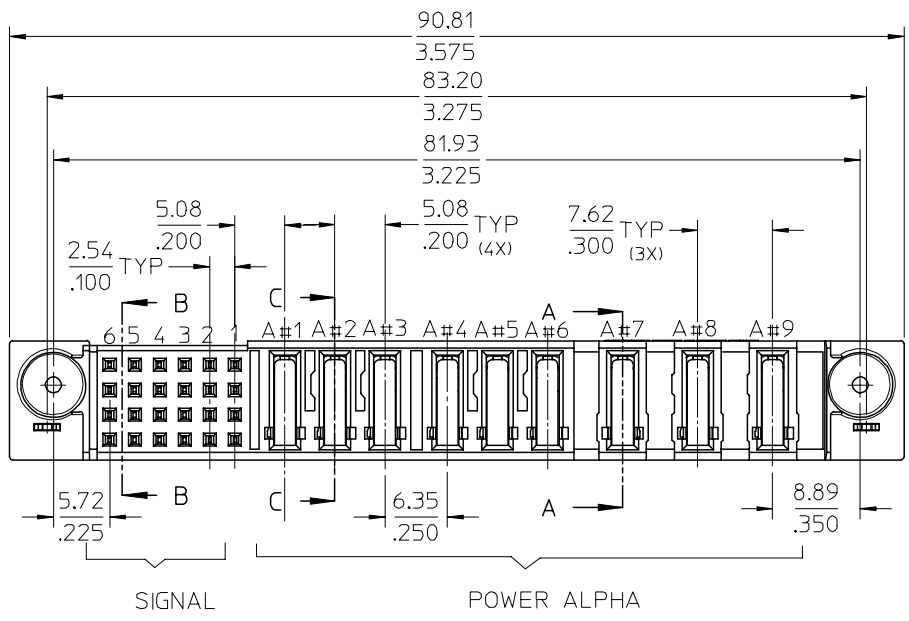
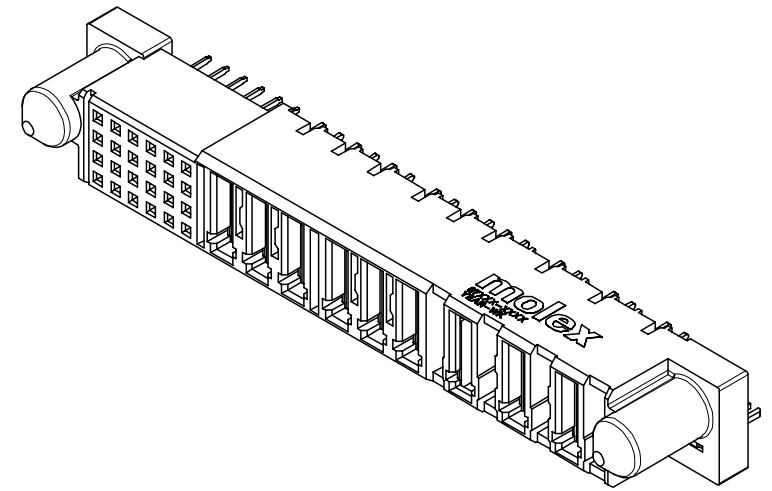
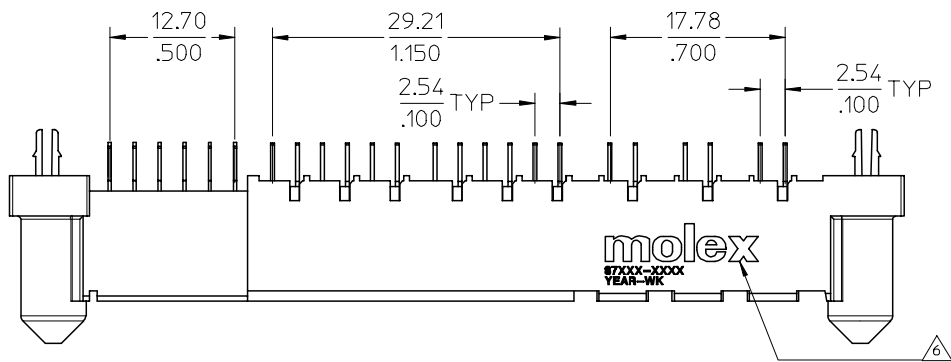
### **Material Info**

### **Reference - Drawing Numbers**

Application Specification AS-87631-018  
Sales Drawing SD-78074-001

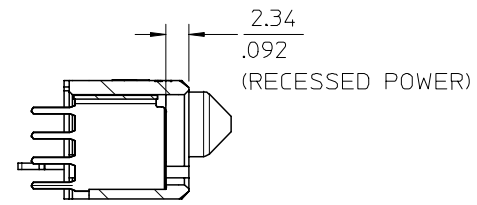
This document was generated on 05/21/2010

**PLEASE CHECK [WWW.MOLEX.COM](http://WWW.MOLEX.COM) FOR LATEST PART INFORMATION**

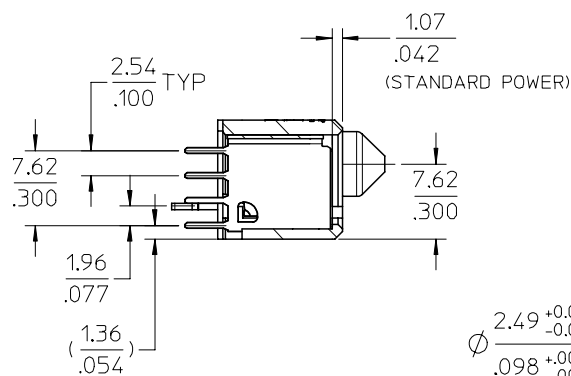


PDR#S-001554-00-00 EC NO: S2007-0842 DRWN:GMENARLY 2007/04/03 CHKD:SKANG 2007/04/03 APPR:MLONG 2007/04/03	QUALITY SYMBOLS ▽=0 ▽=0	GENERAL TOLERANCES (UNLESS SPECIFIED)		DIMENSION STYLE MM/IN		SCALE NTS	DESIGN UNITS METRIC	THIRD ANGLE PROJECTION		
		4 PLACES	± ---	± ---	DRAWN BY	DATE	TITLE POWER CONN. RECEPTACLE P(A)-S CONFIGURATION VERTICAL, T/H, B/L			
		3 PLACES	± ---	± .01	GMENARLY	2007/03/27				
		2 PLACES	± 0.25	± ---	CHECKED BY	DATE	MOLEX INCORPORATED			
1 PLACE	± ---	± ---	SKANG	2007/03/30						
DRAFT WHERE APPLICABLE MUST REMAIN WITHIN DIMENSIONS		ANGULAR ± 3 °		APPROVED BY MLONG		DATE	2007/03/30	DOCUMENT NO. SD-78074-001		
MATERIAL NO.		SEE TABLE		SHEET NO. 1 OF 2						

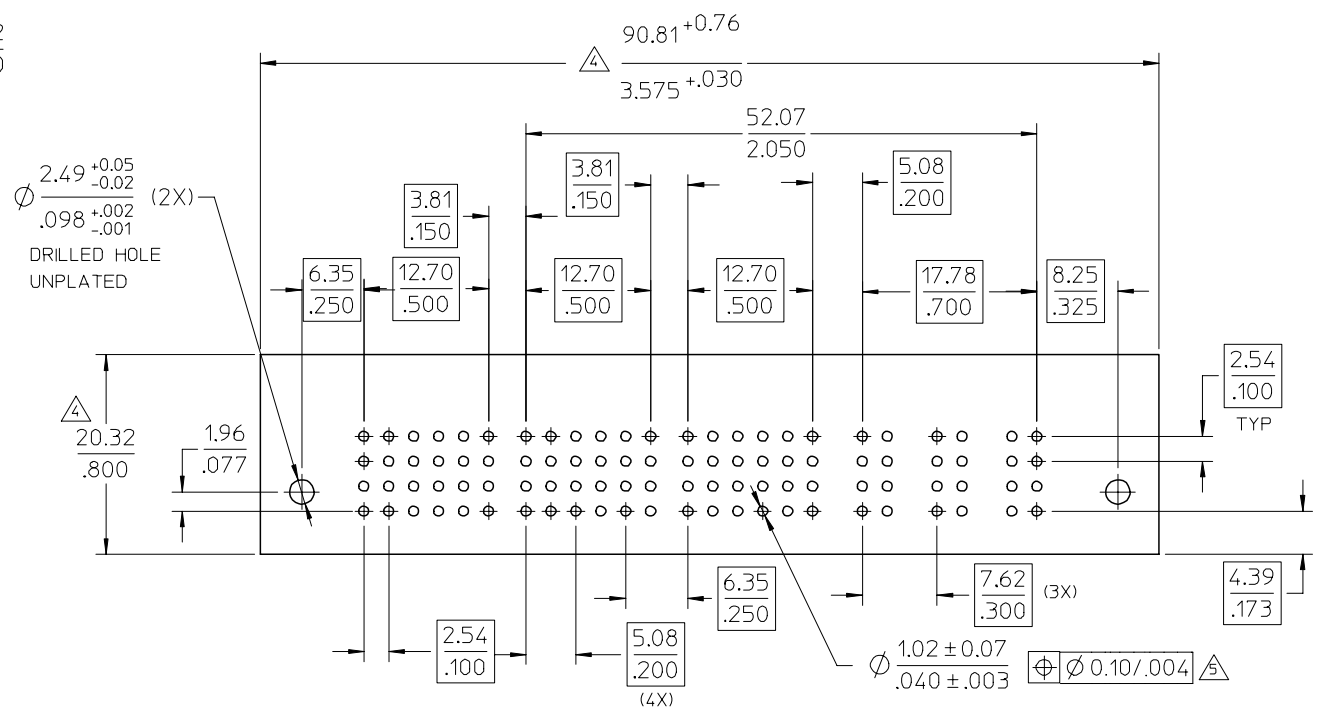
PART NUMBER	P-S CONFIGURATION		RECESSED POWER CIRCUIT	PACKAGING
	SIGNAL	POWER(ALPHA)		
78074-3100	24	9	ALL EXCEPT A7	TRAY



SECTION C-C



SECTION A-A



- NOTES:
- MATERIALS :  
HOUSING - LCP,  
GLASS FILLED, UL94-0,COLOR:BLACK.  
SIGNAL PIN - COPPER ALLOY  
POWER PIN - COPPER ALLOY  
BOARDLOCK - COPPER ALLOY
  - FINISH :  
SIGNAL & POWER CONTACTS  
0.76 MICROMETER MINIMUM GOLD (Au) AT CONTACT AREA  
AND 2.54 MICROMETER MINIMUM TIN AT SOLDER TAIL  
AREA OVER 1.27um MIN. NICKEL (Ni) UNDERPLATE.
  - PRODUCT SPECIFICATION: PS-87631-006.
  - COMPONENT STAY AWAY ZONE FROM CONNECTOR.
  - PCB NOTE FOR DIAMETER 1.02/.040 PLATED HOLE.  
-DRILLED HOLE SIZE IS 1.151/.0453  
-PLATE WITH 0.007/.0003 MINIMUM TIN OVER 0.03/.001  
TO 0.08/.003 COPPER PLATING TO ACHIEVE  
1.02±0.08/.040±.003 HOLE.  
SEE SHEET 2 FOR RECOMMENDED PCB LAYOUT.
  - MANUFACTURER LOGO,PART NUMBER AND YEAR-WEEK  
CODE.

PDR#S-001554-00-00 EC NO: S2007-0842 DRWN:GMENARLY 2007/04/03 CHKD:SKANG 2007/04/03 APPR:MLONG 2007/04/03	QUALITY SYMBOLS ▽=0 ▽=0	GENERAL TOLERANCES (UNLESS SPECIFIED)		DIMENSION STYLE		SCALE	DESIGN UNITS	THIRD ANGLE PROJECTION		
				MM/IN		NTS	METRIC			
						DRAWN BY	DATE	TITLE		
						GMENARLY	2007/03/27	POWER CONN. RECEPTACLE P(A)-S CONFIGURATION VERTICAL, T/H, B/L		
REV A	DESCRIPTION	DRAFT WHERE APPLICABLE MUST REMAIN WITHIN DIMENSIONS		APPROVED BY		MATERIAL NO.		DOCUMENT NO.		
				DATE		SD-78074-001		SHEET NO.		
				MLONG		2007/03/30		2 OF 2		
				SEE TABLE		SD-78074-001				
THIS DRAWING CONTAINS INFORMATION THAT IS PROPRIETARY TO MOLEX INCORPORATED AND SHOULD NOT BE USED WITHOUT WRITTEN PERMISSION										