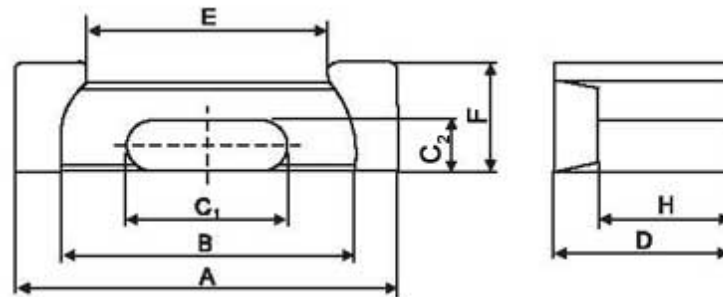




EPC CORES



Introduce of EPC core

EPC Cores cover many different kinds of types, such as EPC10 core, EPC13 core, EPC17 core, EPC19 core, EPC25

core, EPC27 core, EPC30 core, tdk ferrite EPC core etc. The material characteristics have reached the international standard. We developed wide temperature range, high permeability material, tdk ferrite cores, by taking full advantage of ferrite materials experience and precise manufacturing process control technology.

Application of EPC Core

EPC cores are main for transformers of power supplies, reactor cores, EMI filters cores, compact transformer designs with high inductance and high economy of space, signal transformer, DC / DC converters, inductors, Smoothing Choke Coils, Line Filters, etc.

Type	Dimensions(mm)							
	A	Bmin	C1	C2	D	Emin	F	H
EPC10	10.2±0.2	7.6	5.0±0.1	1.9±0.1	4.05±0.1	5.3	3.4±0.1	2.65±0.1
EPC13	13.3±0.3	10.5	5.6±0.15	2.05±0.1	6.6±0.2	8.3	4.6±0.15	4.5±0.2
EPC13A	13.3±0.3	10.5	5.6±0.2	2.1±0.1	6.6±0.2	8.3	4.6±0.2	4.5±0.2
EPC17	17.6±0.38	14.3	7.7±0.15	2.8±0.1	8.55±0.2	11.5	6.0±0.15	6.05±0.2
EPC17A	17.6±0.4	14.3	7.7±0.2	2.8±0.1	8.55±0.2	11.5	6.0±0.2	6.05±0.2
EPC19	19.1±0.48	15.8	8.5±0.15	2.5±0.1	9.75±0.2	13.1	6.0±0.15	7.25±0.2
EPC19A	19.1±0.5	15.8	8.5±0.2	2.5±0.1	9.75±0.2	13.1	6.0±0.2	7.25±0.2
EPC25	25.1±0.5	20.65	11.5±0.2	4.0±0.1	12.5±0.2	17.1	8.0±0.2	9.0±0.3
EPC25A	25.1±0.5	20.6	11.5±0.2	4.0±0.1	12.5±0.2	17.1	8.0±0.2	9.0±0.3
EPC27	27.1±0.05	21.6	13.0±0.3	4.0±0.1	16.0±0.2	18.5	8.0±0.2	12.0±0.3
EPC27A	27.1±0.5	21.6	13.0±0.3	4.0±0.1	16.0±0.2	18.5	8.0±0.2	12.0±0.3
EPC30	30.1±0.5	23.6	15.0±0.3	4.0±0.1	17.5±0.2	20.0	8.0±0.2	13.0±0.3
EPC30A	30.1±0.5	23.6	15.0±0.3	4.0±0.1	17.5±0.2	20.0	8.0±0.2	13.0±0.3

Type	Core parameter				weight(g/pr.)	A _i (nH/N ²)	P _c (W)
	C1(mm ⁻¹)	A _e (mm ²)	l _e (mm)	V _e (mm ³)		F2B1(±25%)	F2B1(max.)
EPC10	1.89	9.39	17.8	167	1.1	1000	
EPC13	2.46	12.5	30.6	382	2.1	870	
EPC13A	2.46	12.5	30.6	382	2.1	870	0.19
EPC17	1.76	22.8	40.2	917	4.5	1150	
EPC17A	1.76	22.8	40.2	917	4.5	1150	0.46
EPC19	2.03	22.7	46.1	1047	5.3	940	
EPC19A	2.03	22.7	46.1	1050	5.3	940	0.53
EPC25	1.28	46.4	59.2	2748	13	1560	
EPC25A	1.28	46.4	59.2	2750	13	1560	1.57
EPC27	1.34	54.6	73.1	3995	18	1540	
EPC27A	1.34	54.6	73.1	3990	18	1540	2.2
EPC30	1.32	61.0	81.6	5035	23	1570	
EPC30A	1.32	61.0	81.6	4980	23	1570	2.7

A_i: 1kHz,0.5mA,100Ts