



# TAI-SAW TECHNOLOGY CO., LTD.

No. 3, Industrial 2nd Rd., Ping-Chen Industrial District,  
Taoyuan, 324, Taiwan, R.O.C.

TEL: 886-3-4690038 FAX: 886-3-4697532

E-mail: [tstsales@mail.taisaw.com](mailto:tstsales@mail.taisaw.com) Web: [www.taisaw.com](http://www.taisaw.com)

## Approval Sheet For Product Specification

Issued Date:

Product Name: SAW Filter 340 MHz SMD 5.0x5.0mm

TST Parts No.:TA0797A

Customer Parts No.:\_\_\_\_\_

Company: _____
Division: _____
Approved by : _____
Date: _____

Checked by: \_\_\_\_\_ Asin Lin

Approval by: \_\_\_\_\_ Francis Chen

Date: \_\_\_\_\_ 2007/11/27



# TAI-SAW TECHNOLOGY CO., LTD.

No. 3, Industrial 2nd Rd., Ping-Chen Industrial District,  
Taoyuan, 324, Taiwan, R.O.C.

TEL: 886-3-4690038 FAX: 886-3-4697532

E-mail: [tstsales@mail.taisaw.com](mailto:tstsales@mail.taisaw.com) Web: [www.taisaw.com](http://www.taisaw.com)

## SAW Filter 340 MHz

MODEL NO.: TA0797A

REV. NO.: 1

### A. MAXIMUM RATING:

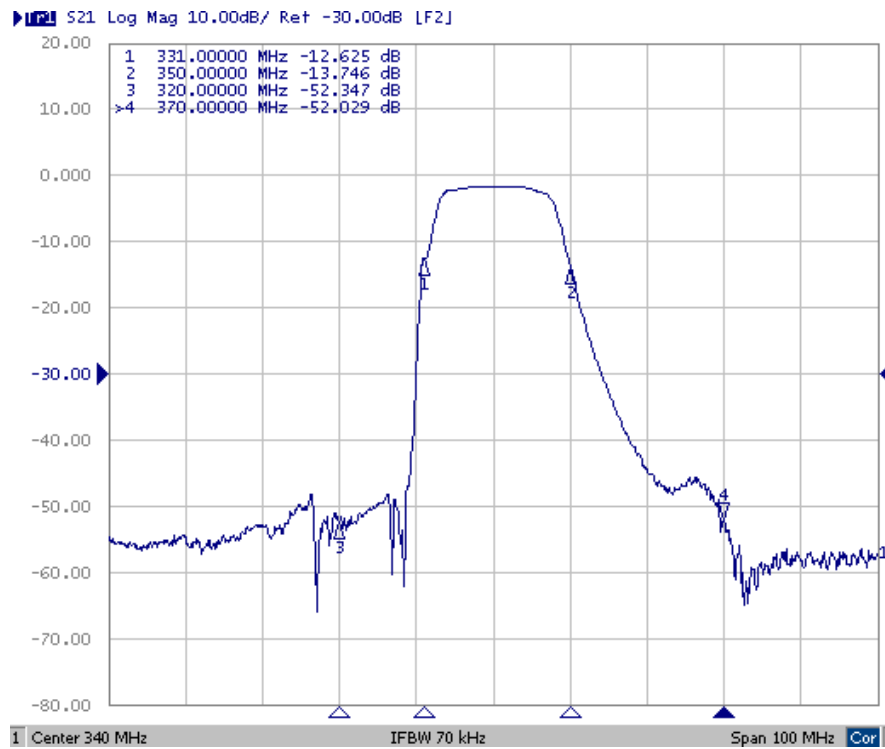
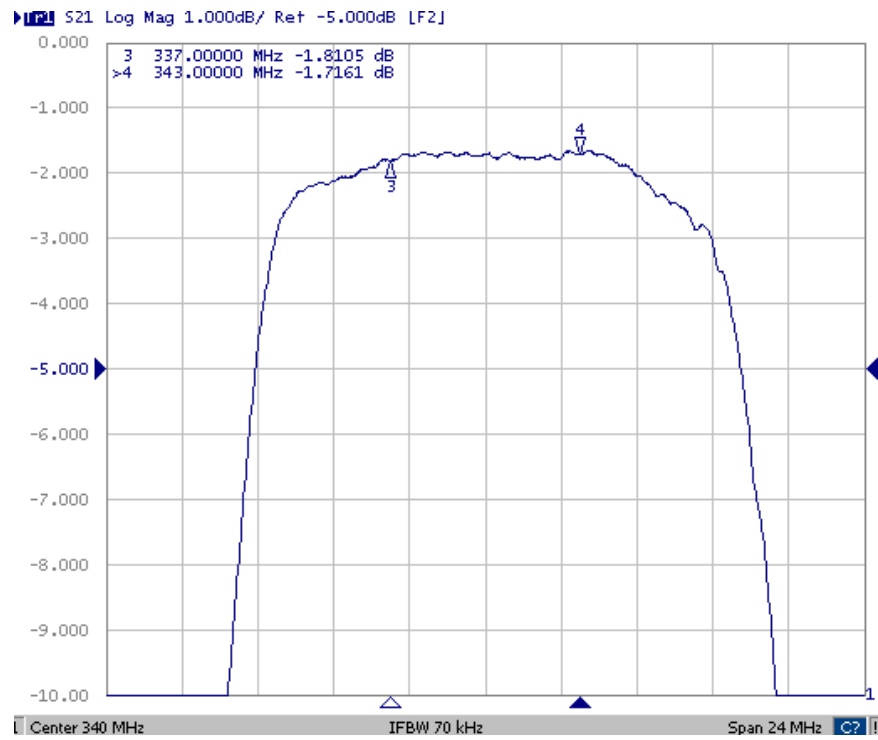
1. Input Power Level: 10 dB<sub>m</sub>
2. DC voltage: 3 V
3. Operating Temperature: -10°C to +65°C
4. Storage Temperature: -40°C to +85°C

RoHS Compliant  
Lead free  
Lead-free soldering

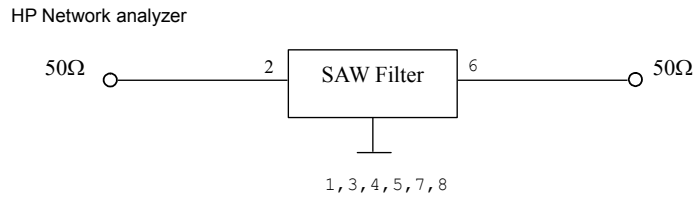
### B. ELECTRICAL CHARACTERISTICS:

Item	Unit	Min.	Type.	Max.
Center frequency Fc	MHz	-	340	-
Insertion Loss 337~343MHz IL	dB	-	1.9	3.5
Ripple 337~343MHz	MHz	-	0.4	1.5
Return Loss 337~343MHz	dB	-	-14	-9
Absolute Attenuation:(Reference level from 0dB)				
300 to 320 MHz	dB	40	46	-
320 to 331 MHz	dB	6	12	-
350 to 370 MHz	dB	6	12	-
370 to 400 MHz	dB	40	45	-
Temperature coefficient of frequency	ppm/k	-	-37	-
Source impedance Zs	Ω	-	50	-
Load impedance ZL	Ω	-	50	-

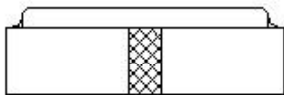
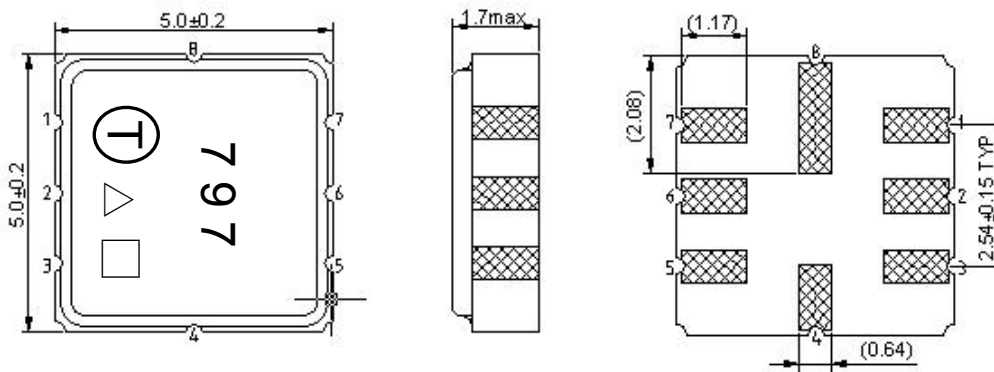
### C. FREQUENCY CHARACTERISTICS:.



### D. MEASUREMENT CIRCUIT:



### E. OUTLINE DRAWING:



Year	2005	2006	2007	2008
	2009	2010	2011	2012
Year Code	<b>A</b>	<b>a</b>	<b><u>A</u></b>	<b><u>a</u></b>

#2: Input

#6: Output

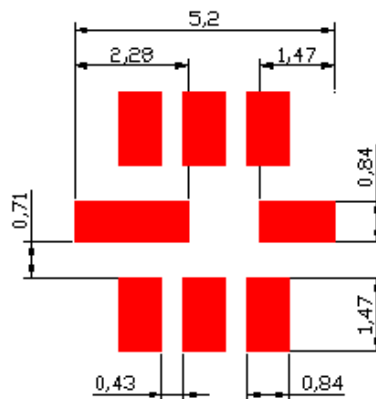
#1,3,4,5,7,8: Ground

△ : Year Code

□ : Date Code (Follow the table provided by planner each year.)

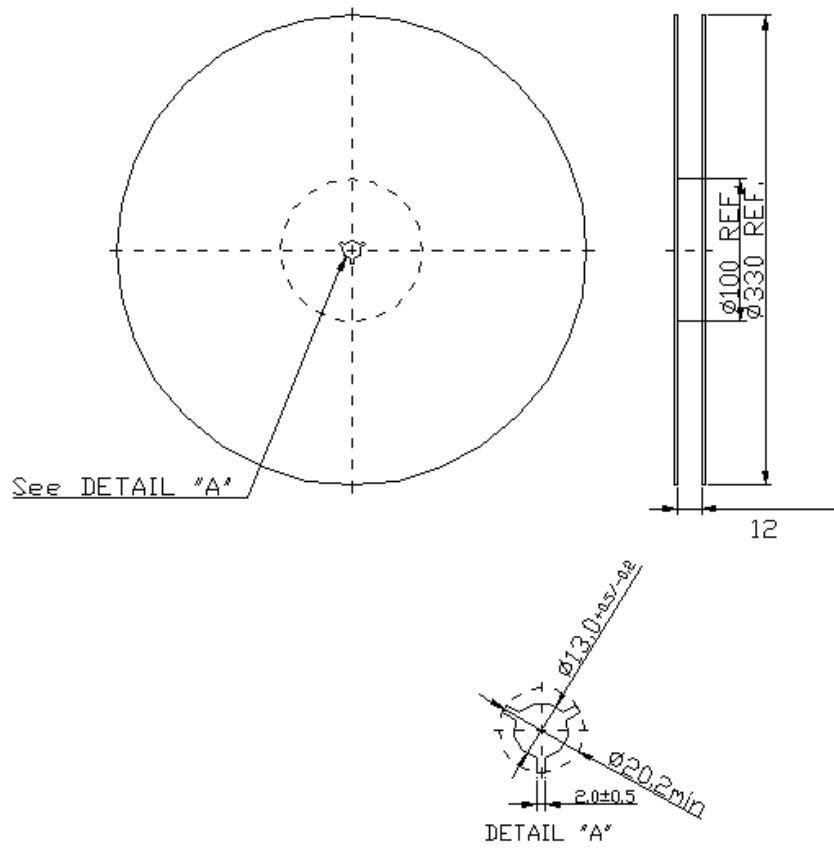
Unit: mm

### F. PCB FOOTPRINT:

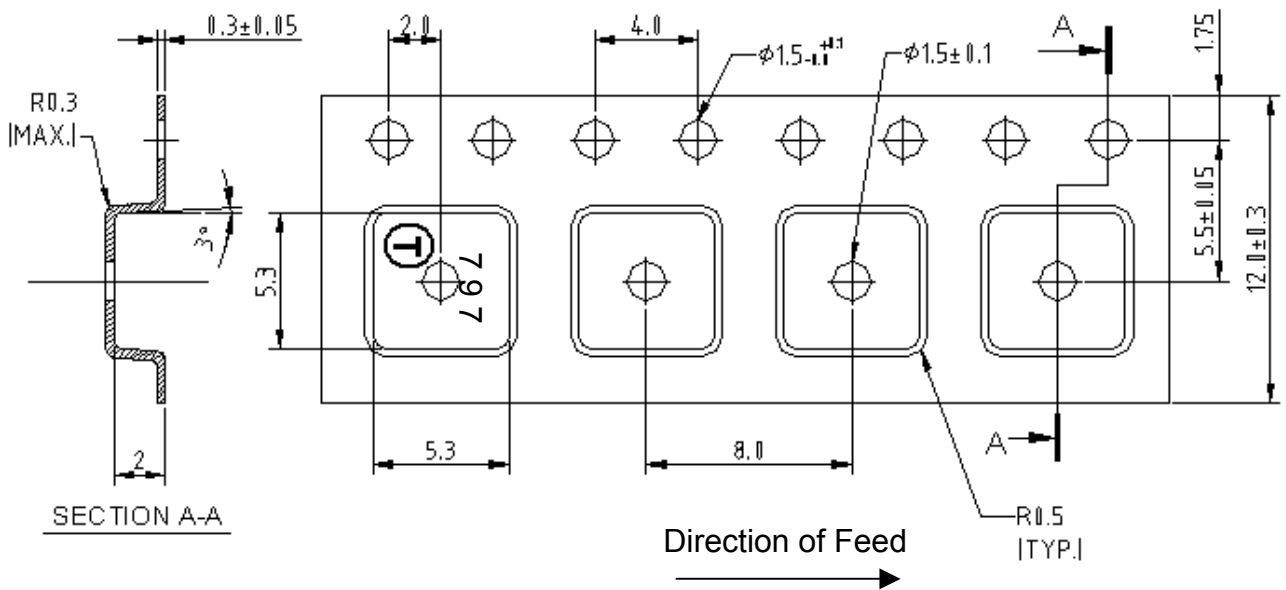


**G. PACKING:**

**1. REEL DIMENSION**



**2. TAPE DIMENSION**



## H.RECOMMENDED REFLOW PROFILE:

