

RADIAL CHOKE COIL

RCC1010 SERIES

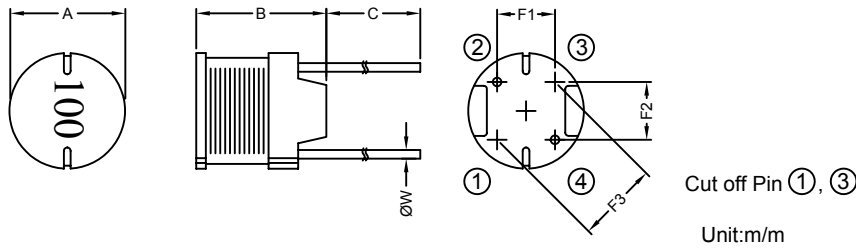
1. PART NO. EXPRESSION :

RCC1010100MZ F
 (a) (b) (c) (d)(e)(f)

- (a) Series code
- (b) Dimension code
- (c) Inductance code : 100 = 10uH

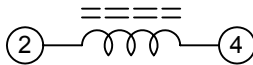
- (d) Tolerance code : K = ±10%, M = ±20%
- (e) X, Y, Z : Standard part
- (f) F : Lead Free

2. CONFIGURATION & DIMENSIONS :

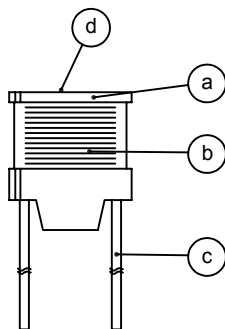


A	B	C	F1	F2	F3	ØW
10.0±0.5	10.0±0.5	15.0±3.0	4.0±0.5	5.0±0.5	6.4±0.5	0.65±0.10

3. SCHEMATIC :



4. MATERIALS :



- (a) Core : DR Ferrite Core
- (b) Wire : Enamelled Copper Wire
- (c) Lead : Tinned Copper Wire
- (d) Ink : Bon Margue

5. GENERAL SPECIFICATION :

- a) The inductance drop at rated is 10% max.
- b) Temp. rise : 40°C max. at rated current
- c) Storage temp. : -40°C to +125°C
- d) Operating temp. : -40°C to +85°C



RoHS Compliant

NOTE : Specifications subject to change without notice. Please check our website for latest information.

01.07.2008

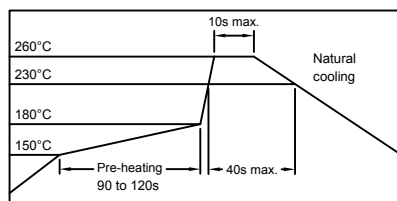


SUPERWORLD ELECTRONICS (S) PTE LTD

6. ELECTRICAL CHARACTERISTICS :

Part No.	Inductance (μH)	Test Frequency (Hz)	RDC (Ω) Max.	IDC (A) Max.
RCC1010100MZF	10 \pm 20%	2.52M	0.022	5.30
RCC1010120MZF	12 \pm 20%	2.52M	0.023	4.90
RCC1010150MZF	15 \pm 20%	2.52M	0.026	4.40
RCC1010180MZF	18 \pm 20%	2.52M	0.033	4.00
RCC1010220MZF	22 \pm 20%	2.52M	0.037	3.60
RCC1010270MZF	27 \pm 20%	2.52M	0.048	3.30
RCC1010330KZF	33 \pm 10%	2.52M	0.055	2.90
RCC1010390KZF	39 \pm 10%	2.52M	0.073	2.70
RCC1010470KZF	47 \pm 10%	2.52M	0.083	2.50
RCC1010560KZF	56 \pm 10%	2.52M	0.092	2.30
RCC1010680KZF	68 \pm 10%	2.52M	0.120	2.10
RCC1010820KZF	82 \pm 10%	2.52M	0.140	1.90
RCC1010101KZF	100 \pm 10%	1K	0.160	1.70
RCC1010121KZF	120 \pm 10%	1K	0.200	1.50
RCC1010151KZF	150 \pm 10%	1K	0.230	1.40
RCC1010181KZF	180 \pm 10%	1K	0.310	1.30
RCC1010221KZF	220 \pm 10%	1K	0.340	1.10
RCC1010271KZF	270 \pm 10%	1K	0.400	1.00
RCC1010331KZF	330 \pm 10%	1K	0.520	0.93
RCC1010391KZF	390 \pm 10%	1K	0.650	0.86
RCC1010471KZF	470 \pm 10%	1K	0.710	0.78
RCC1010561KZF	560 \pm 10%	1K	1.000	0.71
RCC1010681KZF	680 \pm 10%	1K	1.100	0.65
RCC1010821KZF	820 \pm 10%	1K	1.300	0.59
RCC1010102KZF	1000 \pm 10%	1K	1.700	0.53

RECOMMENDED SOLDERING CONDITIONS REFLOW SOLDERINGS



RoHS Compliant

NOTE : Specifications subject to change without notice. Please check our website for latest information.

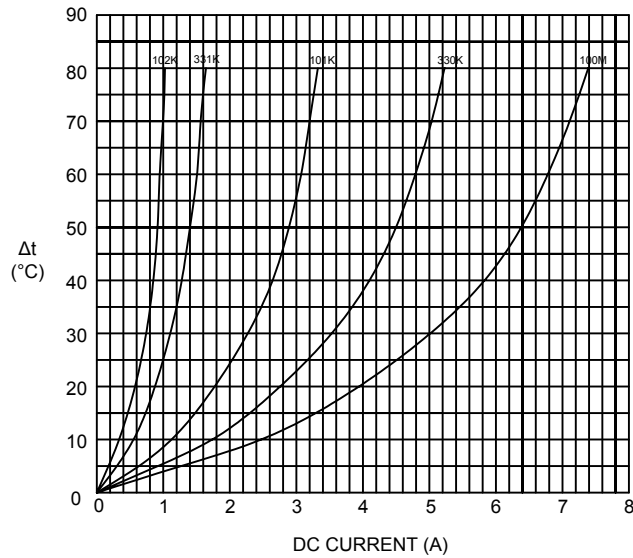
01.07.2008



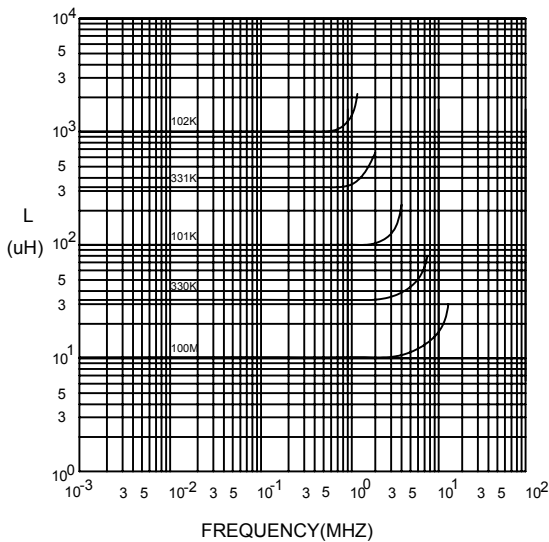
SUPERWORLD ELECTRONICS (S) PTE LTD

7. CHARACTERISTICS CURVES :

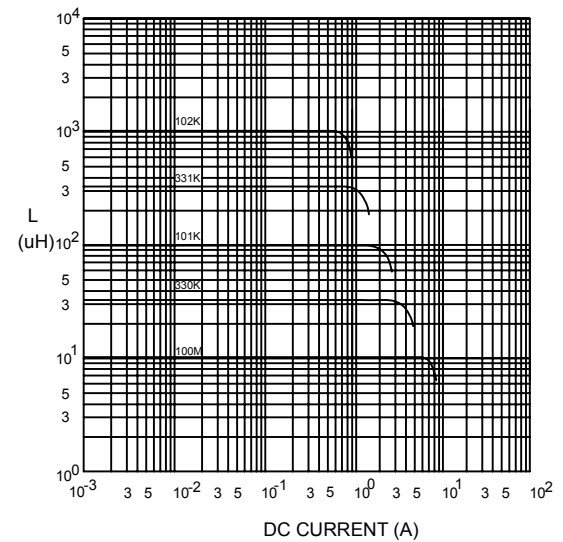
@ TEMP. RISE VS. DC SUPERPOSITION RESPONSE CURVE



@ INDUCTANCE VS. FREQUENCY RESPONSE CURVE



@ INDUCTANCE VS. DC SUPERPOSITION RESPONSE CURVE



NOTE : Specifications subject to change without notice. Please check our website for latest information.



RoHS Compliant

01.07.2008



SUPERWORLD ELECTRONICS (S) PTE LTD

8. PACKAGING INFORMATION :

Size	RCC1010
Inner Package	Tray
Quantity	120 pcs

9. UL CARD :

OBMW2		November 30, 2000		
Magnet Wire - Component				
PACIFIC ELECTRIC WIRE & CABLE (SHENZHEN) CO LTD				E201757
607 BAOLONG INDUSTRIAL ESTATE LONGGANG, SHENZHEN				
GUANGDONG CHINA				
		Coating Type	ANSI	
Mtl Dsg	BC	TC	Type	TI
UEW/U	Polyurethane	—	—	130
PEW/U	Polyester	—	MW5-C	155°C
PEWH/U	Modified Polyester	—	MW30-C	180
PEW-NY/U	Polyester	Polyamide	MW24-C	155
HAI/U	Polyester(Amide)(Imide)	Polyamideimide	MW35,73	200
UEW-NY/U	Polyurethane	Polyamide	MW80-C	155
			MW28-C	130
Marking: Company name and material designation or marked designation on package or reel, and Recognized Component Mark.				
See General Information Preceding These Recognitions				
1/3/2001	Underwriters Laboratories Inc.			Card 1 of 2



RoHS Compliant

NOTE : Specifications subject to change without notice. Please check our website for latest information.

01.07.2008



SUPERWORLD ELECTRONICS (S) PTE LTD